



# Laerdal

helping save lives



## SimCapture for Hospitals

Improve patient safety through recorded and reviewed simulation-based training

SimCapture is a cloud-based solution that helps healthcare institutions deliver high-quality training, education, and quality improvement programs. With access to valuable data, the platform generates reports and statistics on performance and trends to track usage, KPIs, and training outcomes.

SimCapture allows you to seamlessly manage, record, assess, and debrief simulation training on-site, in situ, and remotely. The platform captures audio, video, evaluations, annotations, patient monitors, clinical inputs and simulator data in a single web-based interface. Since SimCapture is mobile-friendly, you can use it anywhere and anytime.

Powered by AI for increased efficiency, SimCapture is the essential tool for advancing healthcare simulation.



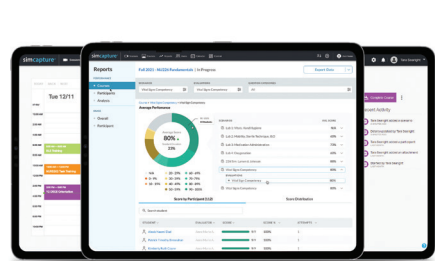
Samaritan is Laerdal's AI-powered helping hand that brings efficiency and intelligence to our solutions. For more information, visit [Laerdal.com/about-us/Samaritan](https://Laerdal.com/about-us/Samaritan)

[Laerdal.com/SimCapture](https://Laerdal.com/SimCapture)



# Cultivate a culture of excellence and continuous improvement

When healthcare professionals can objectively review and assess their performance, patient care improves. Simulation-based training strengthens teamwork and enhances skills and competencies - ultimately elevating patient outcomes.



## Assess Training & Improve Quality

Measurable outcomes and objective, data-driven feedback help teams deliver high-quality care and improve patient safety.

## Enhance IPE Competencies

Team-based, interprofessional education (IPE) using video to capture the sessions and enhance debriefing helps teams improve collaboration skills and performance.

## Simplify Center Management

Streamline all your day-to-day operations – from scheduling to managing resources and producing reports – in one single interface to save time and increase efficiency.

# SimCapture for healthcare quality improvement

SimCapture can be used in many ways within hospitals. Here are a few examples from real SimCapture users:



New staff onboarding



Ongoing interprofessional training and debriefing



In situ training



Accreditation data and reporting



Quality assurance and safety



Research and data collection



# Hospitals trust SimCapture for their simulation needs

In an ever-evolving healthcare landscape, hospitals and healthcare systems need innovative solutions that enhance training and improve patient outcomes. SimCapture stands out as the premier choice for healthcare institutions seeking to strengthen their simulation programs and systems of care.

- **Safe and secure:** Your data security is our top priority. SimCapture adheres to the highest IT security standards, ensuring that all sensitive information is protected with robust encryption. We implement regular security audits and updates to safeguard your data against emerging threats.
- **World-class infrastructure:** SimCapture is the industry's only fully cloud-based, multi-tenant software solution, providing unmatched scalability and performance. With uncapped cloud storage, you can securely archive and access an extensive library of simulation data without limitations.
- **Future-proof:** Designed with flexibility in mind, SimCapture is a scalable solution that adapts to your hospital's evolving needs. Whether expanding your simulation capabilities or integrating new technologies, our platform grows with you, ensuring longevity and relevance in a rapidly changing environment.
- **Best-in-class support:** With SimCapture, you gain access to a dedicated Impact Manager as part of your subscription. This personalized support ensures that you maximize the potential of our platform, providing guidance and assistance tailored to your specific goals and challenges.
- **Trusted partner:** As a complete simulation provider, Laerdal Medical offers seamless integration of SimCapture with other training tools and resources. Our longstanding commitment to quality and innovation makes us a trusted partner in enhancing your hospital's educational initiatives and patient care outcomes.

Choose SimCapture and empower your hospital with the tools to drive effective simulation training and improve healthcare delivery.





## All-in-one platform to meet your simulation needs

Every simulation training setup is unique, and SimCapture is designed to adapt to your specific requirements. Our scalable platform allows you to select the ideal solution that aligns with your goals, empowering healthcare providers to enhance their competencies effectively.



### Make sense of the data to build stronger interprofessional teams

- Maximize your simulation-based training and provide insightful feedback, helping your staff to improve and grow.
- Evaluate performance and track outcomes against standards of practice through interprofessional scenarios that foster collaboration and communication.
- SimCapture's built-in analytics tool allows for detailed performance assessments, ensuring that every healthcare professional continues to enhance their skills and knowledge.

## Team Training

According to the Joint Commission, communication breakdowns and teamwork failures continue to be leading causes for reported sentinel events.<sup>1</sup> When providers work effectively as a team, they can make a positive impact on patient outcomes, reduce medical errors, and increase patient satisfaction.<sup>2</sup>



1. Sentinel Event Data 2023 Annual Review, (2024). Joint Commission. Retrieved from [https://www.jointcommission.org/-/media/tjc/documents/resources/patient-safety-topics/sentinel-event/2024/2024\\_sentinel-event-\\_annual-review\\_published-2024.pdf](https://www.jointcommission.org/-/media/tjc/documents/resources/patient-safety-topics/sentinel-event/2024/2024_sentinel-event-_annual-review_published-2024.pdf)  
2. Bhatt, J. & Swick, M. (2017). Focusing on Teamwork and Communication to Improve Patient Safety. American Hospital Association. Retrieved from <https://www.aha.org/news/blog/2017-03-15-focusing-teamwork-and-communication-improve-patient-safety>



## Optimize training with mobility and consistency

- Capture any simulation session using AV systems or mobile devices: in the simulation lab, on the move (transport cases), or in situ.
- Live stream your training sessions or record offline and upload to the cloud once a connection is established.
- Streamline your processes through the singular, fully digital interface. Scenarios are repeatable, ensuring regular exposure and familiarization for your staff.

## Simplify your simulation center management with one powerful platform

- All-in-one centralized platform for scheduling, resource management, and automated reporting.
- Center sign in – easily track how much your staff is using the sim center and use this data for accreditation purposes.
- Learners can also track their own sim lab hours.
- Single sign-on for easy access to SimCapture.
- Automatically track consumable and capital usage in simulation sessions – to simplify planning, forecasting, and budgeting.



## Recreate the actual environment and use video-assisted debriefing to better prepare clinicians

- SimCapture enables team-based simulation in real-life conditions, where surgical devices, medical imaging devices, and electronic medical records (EMR) are captured.
- The use of immediate, annotated video feedback allows learners to have an objective basis for self-reflection and progress towards achieving inter-professional education (IPE) outcomes.
- All video captured is secured and complies with authenticated device support standards.







“

I like SimCapture for its ability to provide accountability, targeted education, and flexibility. It removes ambiguity around skill check-offs, clearly showing whether a skill has been mastered. SimCapture saves time by allowing learners to complete skills independently. The flexibility allows night shift nurses to complete videos during a time convenient to them. Overall, the combination of data collection, accountability, and flexibility significantly enhances our organization.

---

Midland Memorial Hospital Simulation Team