

# SimNewB™ Anomaly Set



ENGLISH

Setup Guide





**Table of Contents**

**INTRODUCTION**

SimNewB Anomaly Set ..... 2  
 SimNewB Anomaly Set features ..... 2

**SETUP GUIDE**

Package contents ..... 3  
 Installation ..... 4

**GENERAL HANDLING**

Cleaning ..... 7  
 Storage ..... 7

**ENGLISH**



## Introduction

### **SimNewB™ Anomaly Set**

The SimNewB™ Anomaly Set was designed by Laerdal with the American Academy of Pediatrics to meet the training requirements of the Neonatal Resuscitation Program (NRP).

The SimNewB Anomaly Set is ideal for training for the unique needs of neonates born with congenital anomalies.

**The SimNewB™ Anomaly Set can be used with all versions of SimNewB™ Neonatal Simulator and NewBorn Anne.**

### **SimNewB Anomaly Set features:**

#### **Head Skins (3)**

- Forcep Laceration (1)
- Cleft Lip (1)
- Cystic Hygroma with Cheek Insert (1)

#### **Polycystic Kidneys (2)**

#### **Myelomeningocele (1)**

#### **Omphalocele (1)**

## Package Contents

### SimNewB™ package contents

The following parts are included in the SimNewB Anomaly Set.

Forcep Head Skin



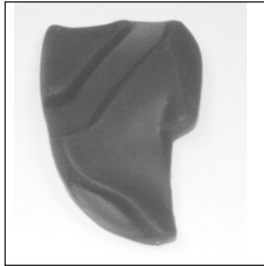
Cleft Lip Head Skin



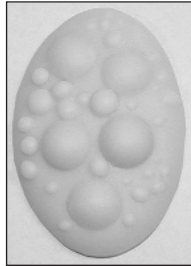
Cystic Hygroma  
Head Skin



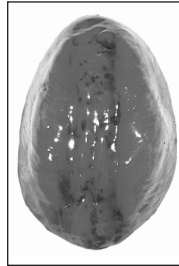
Cystic Hygroma Insert



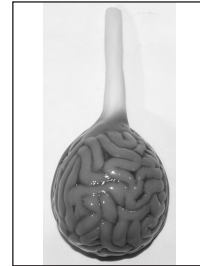
Polycystic Kidneys (2)



Myelomeningocele Insert



Omphalocele Insert



**Forcep Laceration and Cleft Lip Head Skin:****Step 1**

Carefully detach the plain head skin from the pegs at the back of the head and upper underbody and gently roll it off the head.

**Step 2**

Select the anomaly head skin. Gently turn it inside out. Line up the skin airway opening with the airway assembly opening. Carefully roll the skin over the head.

**Step 3**

Re-attach the skin to the pegs. To verify that the anomaly head skin is properly positioned, check that the mouth and airway openings are aligned and the eyes are visible through the skin eye slits.

**Cystic Hygroma Head Skin:****Step 1**

Carefully detach the plain head skin from the pegs at the back of the head and upper underbody and gently roll it off the head.

**Step 2**

Select the cystic hygroma head skin and the cystic hygroma insert. Gently turn the skin inside out and carefully roll it over the head.

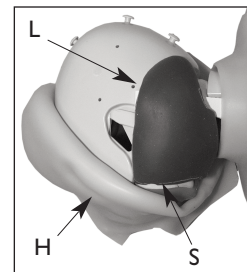
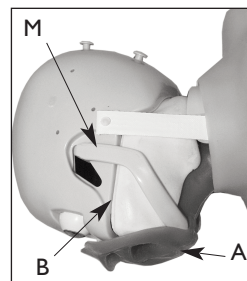
NOTE: re-attach the head skin right side only to the pegs. To install the cheek insert, roll back the left side of the head skin (H), Position cystic hygroma as shown: long side (L) even with the skull base baseline (B), short side (S) flush with the airway (A). The left mandible (M) should be aligned with the groove on the back side of the cheek insert.

**Step 3**

Carefully roll the head skin left side over the cystic hygroma insert to keep it in place and re-attach to the pegs.

**Step 4**

To verify that the anomaly head skin is properly positioned, check that the mouth and airway openings are aligned and the eyes are visible through the skin eye slits.



## Myelomeningocele

### Step 1

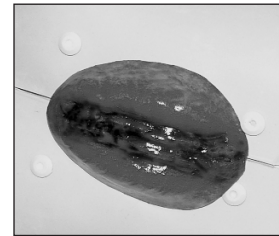
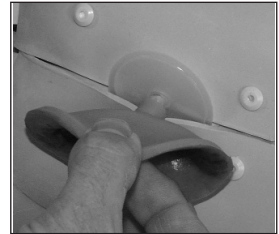
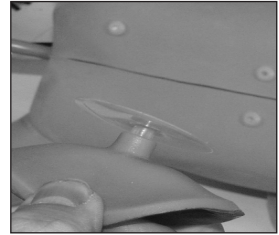
Select the anomaly and turn the manikin face down to expose the back of the body skin.

### Step 2

Bend the anomaly back and insert the clear plastic disc under both sides of the skin. Once installed, the anomaly should rest flush on the back of the neonate.

The myelomeningocele prosthesis may be placed along the cervical, thoracic and lumbar spines to simulate different types of lesions.

**Note:** It is not required to detach the manikin's body skin at the pegs in the back to install the myelomeningocele insert.



## Omphalocele

### Step 1

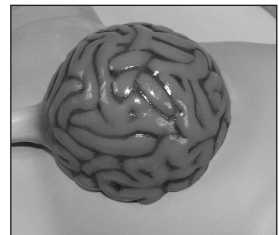
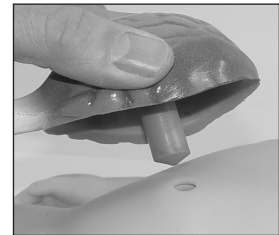
Remove the umbilical cord.

### Step 2

Lubricate the navel opening with a small amount of liquid detergent to facilitate the insertion of the omphalocele insert.

### Step 3

Select the anomaly and insert into the navel opening. Once installed, the anomaly should rest flush on the abdomen of the neonate.



## Polycystic Kidneys

### Step 1

Select the anomaly and turn the manikin face down to expose the back of the body skin.

### Step 2

Detach the skin from the lower 2 sets of pegs.

### Step 3

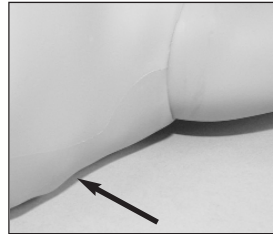
Insert an anomaly on each side of the manikin as shown.

NOTE/Caution: Do not cover the left side ECG connector with the left polycystic kidney insert.

### Step 4

Re-attach the body skin on the pegs.

Note: When the polycystic kidneys are in place, there will be a slight bulge on each side of the manikin (see arrow).





## General Handling

### Cleaning

Gently clean the modules with a soft cloth, mild soap and water.

### Storage

Store modules in a dry environment.

## Replacement Parts

For latest version of Spare Parts and Accessories, visit [www.laerdal.com](http://www.laerdal.com)

## Global Warranty

See the Laerdal Global Warranty Booklet, or [www.laerdal.com](http://www.laerdal.com)



**Laerdal**

*helping save lives*