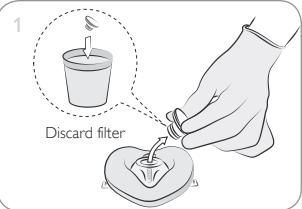
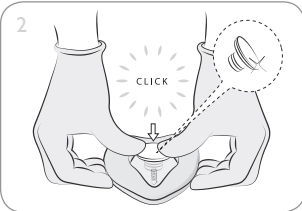


Changing Filter

Remove Used Filter



Hold Mask and pull Filter outwards and sideways, so it separates from Mask.



Place the mask on a hard, flat surface and insert a new filter. Firm pressure is required to ensure that filter is properly attached.

Notes

- The mask can be used without filter.
- Ensure the mask is folded when changing filter.

Cleaning and Disinfection

Warnings

- The One-way Valve, Head Strap and Filter are designed for single patient use only. Re-use will lead to increased risk of cross contamination, degradation of performance, and/or device malfunction. Laerdal is not responsible for any consequences of re-use.
- If Pocket Mask does not function, remove from the patient and continue with ventilations.

Mask can be cleaned and disinfected, and reused after manikin training and patient use.

1. Wash and scrub in warm soapy water.
2. Rinse in clean water for min 1 min.
3. Submerge for 10 minutes in a 0.5% Sodium Hypochlorite solution.
4. Rinse under running tap water for 3 min.
5. Allow to dry completely.

Cautions

- Do not pasteurize, boil or steam autodeve. PVC has low resistance to high temperatures.
- Do not reprocess with other chemicals than those defined above. PVC is not compatible with many solvents.
- Inspect Pocket Mask after reprocessing and discard if damaged or faulty.

Patient Use

The mask can be re-used after it has been cleaned and disinfected according to instructions. One-way Valve, Head Strap and filter must be discarded after single patient use.

Specifications

Temperature limits	
Operating	-10 °C (14 °F) to 40 °C (104 °F)
Storage	-40 °C (-40 °F) to 50 °C (122 °F)
Humidity	5 - 95 %
Lifetime Parameters	
Shelf-life	5 years
Expected service life	20 cycles of cleaning and disinfection
Expiratory resistance for the patient*	
Mask & One-way Valve	≈ 3 cm H ₂ O
Mask, Filter & One-way Valve	≈ 5 cm H ₂ O
Inspiratory resistance for the patient*	
Mask & One-way Valve	≈ 3 cm H ₂ O
Mask, Filter & One-way Valve	≈ 5 cm H ₂ O

Performance data are nominal values only.
* As per standard test method

Cat. no.	Name	Material
83xxxx	Mask	PVC
820610	Filter	PP
820410	One-way Valve	PC, Si
830110	Head Strap	PA6, PES, PA and Elastane
n/a	Hard Case	PP
	Soft Pouch	PET, PVC
	Oxygen Inlet	PC, Si
	Poly bag	LDPE

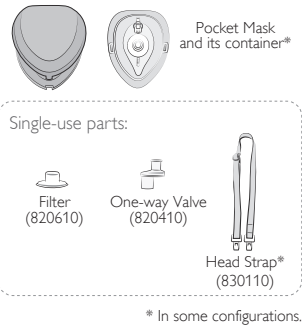
Regulatory Information

Symbol Glossary	
	Medical Device
	Caution: Federal law restricts this device to sale by, or on the order of a physician (US).
	Single-use symbol
	Not made with natural rubber latex
Laerdal Pocket Mask w/one-way valve, filter and oxygen inlet	
	This medical device complies with the general safety and performance requirements of Regulation (EU) 2017/745 for medical devices.

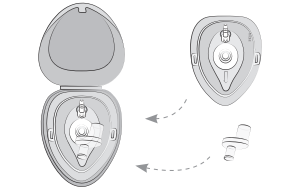
Note

Should any serious malfunction, undesirable incident with, or deterioration in the functionality or performance of the device occur, contact Laerdal promptly. The competent authority where the incident took place and/or the device was used should also be notified.

Items Included



Storage



Pocket Mask is a trademark of Laerdal Medical AS

© 2025 Laerdal Medical AS. All rights reserved.

Date of issue: 2025-03

Laerdal Medical AS
P.O. Box 377, Tanke Svilandsgate 30,
4002 Stavanger, Norway
T: (+47) 51511700

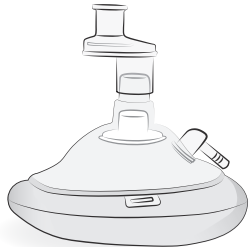
Distributed by:
Laerdal Pty Ltd
8 Stamford Road, Oakleigh, VIC. 3166,
AUSTRALIA



www.laerdal.com

Pocket Mask with Oxygen Inlet

User Guide



6310 Rev.T

Intended Use

The Pocket Mask with Oxygen Inlet is designed for mouth-to-mask ventilation of a non-breathing adult as a barrier between the rescuer and patient. The Pocket Mask with Oxygen Inlet can be connected to an external Oxygen source.

Important Information

This device should only be used by persons who have received adequate training.

Read this User Guide and become familiar with the operation of the product prior to use. Use the product only as described in this User Guide.

Observe all warnings, cautions and instructions. Retain this booklet for future reference.

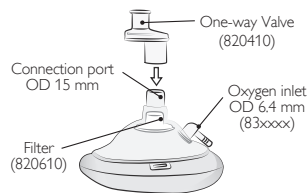
Other ventilation equipment, e.g. a bag-valve resuscitator or oxygen powered resuscitator, may be coupled to the 15 mm connection port (without the One-way Valve) of the Laerdal Pocket Mask.

⚠ Warnings and Cautions

A Warning states a condition, hazard, or unsafe practice that can result in serious personal injury or death.

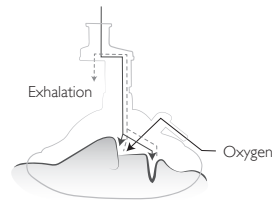
A Caution states a condition, hazard, or unsafe practice that can result in minor personal injury or damage to the product.

Overview

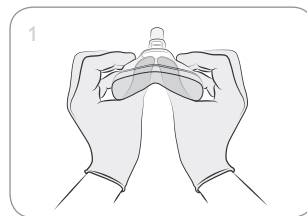


Function

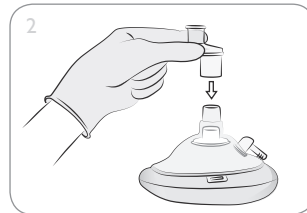
Ventilation with supplemental Oxygen (83xxxx)



Setup



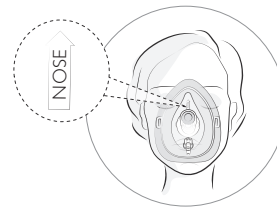
Check that the Filter is snapped firmly into place, and push out dome.



Attach One-way Valve to mask port.

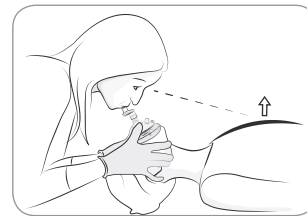
⚠ Caution
At lower temperatures the Pocket Mask can be harder to unfold.

Placement of Mask



Ensure position end marked "nose" is over the patient's nose.

Use of Mask



Seal as illustrated. Blow slowly until chest rises.

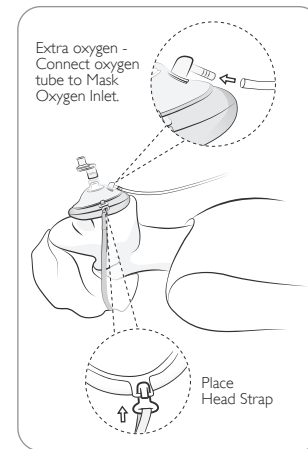
Contamination

If contaminated, remove mask and clear patient's airway. Clear mask by shaking or sweeping out foreign material. Blow through valve to verify operation. Reapply mask and continue ventilation.

⚠ Cautions

- If the product becomes too contaminated or difficult to clear, continue with ventilation without the mask.
- Remove the Pocket Mask if it does not fit the face of the patient or if adequate sealing can not be achieved.

Use of Mask with Oxygen



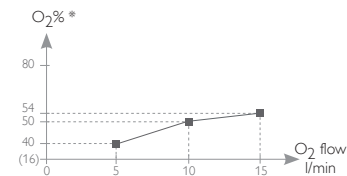
Strapping Mask to face facilitates CPR and spontaneous inhalation of oxygen.

Select oxygen flow (see oxygen chart). Provide Mouth to Mask ventilation if necessary.

Note

Oxygen tube is not supplied by Laerdal.

Delivered Oxygen Concentration



■ Ventilation of non-breathing patient

* Fraction of inspired oxygen (FiO_2) from oxygen-enriched mouth-to-mouth ventilation tested at 600 ml tidal volume, 15 ventilations per minute 1.5-2 seconds inspiration time.