



Laerdal

helping save lives

Lifesaving Solutions

2018/19



laerdal.com

helping save lives

Helping save 500,000 more lives. Every year. By 2020.
The word Helping is key. Laerdal does not save lives.
Bystanders, first responders and healthcare personnel do,
when providing essential help in life-threatening
situations. Our aim is to help those who train and equip
these lifesavers to be more effective in their work.



Buy One Gift One Program:

For each MamaNatalie and MamaBirthie simulator purchased through Laerdal for use in high-income countries, a second one is being gifted to support the Helping Mothers Survive initiative in low-income countries.

Since 2010, 4,000 birthing simulators have been gifted in addition to 5,000 newborn simulators donated by Laerdal for the Helping Babies Breathe program.

Baby Tayeeba

When Rikta's baby girl was born, she was not breathing. The birth attendant, Sakhina Begum, who had been trained by the Helping Babies Breathe program just one week before, knew what to do. After attempting to revive the baby by stimulation unsuccessfully, she performed resuscitation using a bag and mask, followed by suction using products she had been given at training. Within a minute, baby Tayeeba cried out. Tayeeba survived.

This took place in Dhaka, Bangladesh.



Laerdal
helping save lives





Patient Care



Resuscitation



Global Health

500,000 every year
by 2020

Patient Care

Every year, medical errors are responsible for at least 250,000 deaths in the United States alone. We believe better implementation of simulation education can contribute to a 20% reduction errors, helping save 50,000 more lives, every year.

Resuscitation

It is estimated that over 1 million people die of sudden cardiac arrest in high-resource countries, annually. By applying best practices, we believe survival rates can be increased from 7% to 12%, helping save 50,000 more lives, every year.

Global Health

By helping to train and equip healthcare providers in low-resource countries to help save lives of mothers and babies at birth, we believe we can help save 400,000 more lives, every year.

Resuscitation Training

| | |
|--------------------------------------------|----|
| SkillGuide..... | 16 |
| SimPad PLUS | |
| with SkillReporter..... | 16 |
| Session Viewer..... | 17 |
| SkillReporter (PC)..... | 17 |
| NEW QCPR Instructor App..... | 18 |
| NEW QCPR Learner App..... | 18 |
| QCPR feedback overview..... | 18 |
| | |
| Resusci Anne QCPR..... | 20 |
| NEW Resusci Junior QCPR..... | 22 |
| Resusci Baby QCPR..... | 23 |
| NEW Little Anne QCPR..... | 24 |
| Little Anne AED..... | 25 |
| NEW Little Junior QCPR..... | 26 |
| NEW Baby Anne..... | 27 |
| NEW Little Family Pack..... | 28 |
| Mini Anne..... | 28 |
| Mini Anne Plus..... | 29 |
| Newborn Anne..... | 30 |
| Resusci Anne Rescue and Trauma Models..... | 31 |
| Head Section Model..... | 31 |
| | |
| NEW CPRmeter 2..... | 32 |
| ShockLink..... | 34 |
| Resusci Manikins and Feedback Devices | |
| Accessories and Consumables..... | 35 |
| | |
| AED Trainer 3..... | 36 |
| Laerdal AED Trainer 2..... | 36 |
| HeartStart AED Trainer..... | 37 |
| HeartStart FRx Trainer..... | 37 |

Emergency Care & Trauma

| | |
|---------------------------------------------------|----|
| SimMan 3G..... | 40 |
| NEW ASL 5000 Lung Solution..... | 40 |
| SimMan 3G Trauma..... | 41 |
| SimMan Essential..... | 42 |
| SimMan ALS..... | 42 |
| NEW SimMan Vascular..... | 44 |
| VitalsBridge..... | 45 |
| NEW SimBaby..... | 46 |
| Laerdal SonoSim Ultrasound Solution..... | 48 |
| SonoSim Ultrasound Training Solution..... | 49 |
| NEW Laerdal SonoSim Procedure Trainer..... | 49 |
| | |
| SimJunior..... | 50 |
| Resusci Anne Simulator..... | 51 |
| Resusci Anne Advanced SkillTrainer..... | 52 |
| MegaCode Kelly..... | 53 |
| MegaCode Kid..... | 54 |
| Laerdal ALS Baby..... | 55 |
| Harvey The Cardiopulmonary | |
| Patient Simulator..... | 56 |
| UMedic..... | 57 |
| Extri Kelly..... | 58 |
| Crash Kelly..... | 58 |
| | |
| SimCenter..... | 59 |
| LLEAP..... | 60 |
| SimView..... | 61 |
| SimPad PLUS System..... | 62 |

Nursing & Patient Care

| | |
|----------------------------------------|----|
| NEW Nursing Anne Simulator..... | 66 |
| Nursing Anne..... | 68 |
| Nursing Kelly..... | 69 |
| Nursing Kid..... | 70 |
| Nursing Baby..... | 71 |
| Interchangeable | |
| Catheterization and Enema Trainer..... | 72 |
| Fundus Skills | |
| and Assessment Trainer..... | 72 |
| In-Service Home Care Trainer..... | 73 |

Maternal & Newborn

| | |
|---------------------------------------|----|
| NEW SimMom..... | 76 |
| NEW MamaBirthie Simulator..... | 78 |
| MamaNatalie Birthing Simulator..... | 78 |
| Buy One Gift One Program..... | 79 |
| | |
| NEW Prompt Flex..... | 80 |
| Premature Anne..... | 81 |
| NEW SimNewB..... | 82 |
| | |
| NeoNatalie..... | 84 |
| Mama-U..... | 85 |
| MamaBreast..... | 85 |

Skills Proficiency

Airway Management Trainers

| | |
|-----------------------------------------------|----|
| Pediatric Intubation Trainer | 88 |
| Laerdal Neonatal Intubation Trainer | 88 |
| NG Tube and Trach Care Trainer | 89 |
| Laerdal Infant Airway Management Trainer..... | 89 |
| Laerdal Airway Management Trainer | 90 |
| Deluxe Difficult Airway Trainer | 90 |
| Pneumothorax Trainer | 91 |
| AT Kelly Torso..... | 91 |
| Cricoid Stick Trainer | 92 |
| Choking Charlie..... | 92 |
| 12-Lead Task Trainer | 94 |
| SimPad® Arrhythmia Trainer | 94 |
| HeartSim® 200..... | 94 |
| Symbio Rhythm Simulator..... | 95 |
| SimPad Sounds Trainer | 95 |

Neonatal Manikins & Trainers

| | |
|------------------|----|
| Baby Umbi..... | 96 |
| Baby Stap..... | 96 |
| Baby Hippy | 96 |

Venous & Arterial Access Trainers

| | |
|--------------------------------------------------|----|
| Chester Chest..... | 97 |
| Multi-Venous IV Training Arms..... | 97 |
| Paediatric Multi-Venous IV Training Arm Kit..... | 98 |
| Arterial Arm Stick Kit..... | 98 |
| Laerdal Intraosseous Trainer..... | 98 |
| Laerdal IV Torso..... | 99 |

Medical Devices

Airway Management

CPR Barrier Devices

| | |
|--------------------------------------|-----|
| Laerdal Pocket Mask | 102 |
| Laerdal Paediatric Pocket Mask | 103 |
| Laerdal Face Shield | 104 |

Ventilation

| | |
|-----------------------------------------------|-----|
| NEW Laerdal Upright Resuscitator | 105 |
| Laerdal | |
| Silicone Resuscitator (LSR) | 106 |
| Laerdal Silicone Masks | 107 |
| The BAG II | |
| Disposable Resuscitator | 108 |
| Thomas Tube Holders..... | 109 |

Suction Units

| | |
|---------------------------------|-----|
| Laerdal Compact Suction Unit | |
| (LCSU) 4 | 110 |
| Laerdal Suction Unit (LSU)..... | 111 |
| V-VAC Manual Suction Unit..... | 112 |
| Penguin Suction Device | 113 |

Defibrillation

| | |
|---------------------------------------------|-----|
| HeartStart HS1 First Aid Defibrillator..... | 116 |
| HeartStart FRx..... | 117 |
| HeartStart FR3 | 117 |
| HeartStart MRx Consumables | 118 |
| CPRmeter 2..... | 119 |

Immobilisation

| | |
|---------------------------------------|-----|
| Stifneck Select Collars | |
| - Adult and Paediatric..... | 122 |
| Stifneck Extrication Collars..... | 122 |
| BaXstrap Spineboard | 123 |
| HeadBed II Head Immobilization | |
| Device..... | 124 |
| Sta-Blok Head Immobilizer | 124 |
| PadPack Alignment Pads..... | 124 |
| SpeedBlocks Head Immobilizer..... | 125 |
| Laerdal Pedi-Pad Spineboard Pad | 125 |

Laerdal Services

Helping you make the most of your training

Laerdal offers comprehensive Educational and Technical Services designed to support healthcare professionals successfully implement and sustain simulation training programs for maximum lifetime value.

Our team of educators and technicians have years of industry related experience, with the ability to provide a wide range of options to help you maintain your simulation equipment and gain the critical skills necessary to optimize performance and learning outcomes.

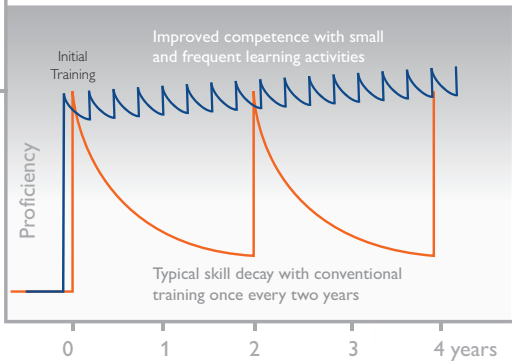
From maintaining your equipment to best practice instruction, Laerdal's Service Solutions have you covered – around the globe. When you purchase a Laerdal simulator, you expect highly reliable performance. You should expect the same level of performance from your service team. That is what you get from our Technical Support Representatives, Field Service Engineers and Education Service Specialists.



Revolution in Health Care Quality

Doubling Survival from In-hospital Sudden Cardiac Arrest

For decades, healthcare providers have typically been undertaking Basic and Advanced Life Support training once every one to two years. However, over recent years, researchers have shown that resuscitation skills deteriorate quickly, often in three to six months after training. To help maintain and improve these important lifesaving skills, Laerdal has collaborated with the American Heart Association (AHA) to develop the Resuscitation Quality Improvement (RQI) program. This program enables learners to practice their skills every three months in short sessions of 10 to 15 minutes, without an instructor present.



Low-Dose, High-Frequency Refresher Training*

This method of training has the major advantage of more value and increased competence for less money. Instead of incurring the cost of sending healthcare providers away from the workplace for courses, learning occurs as a part of normal, daily activities with the added advantage of being fully in context. Thus, both improved patient care and good return on investment result.

* For references see www.laerdal.com/references

A young boy with blonde hair and blue eyes, wearing a white long-sleeved shirt, is leaning over a medical training mannequin. He is performing CPR, with his hands on the mannequin's chest. The mannequin is lying on a reflective surface. In the background, other people are visible, but they are out of focus.

Simulation & Training

Resuscitation Training

For more than 50 years, Laerdal Medical has been dedicated to supporting the advancement of Resuscitation Science and helping implement what has been shown to work.

Our lifelike and durable products have prepared generations of medical professionals and lay responders around the world to save lives and improve patient outcomes.

QCPR Feedback Solutions



SkillGuide

The SkillGuide for QCPR manikins enhances the ability to measure, track, and improve your CPR skills. Small, portable, and lightweight, it is compatible with Resusci Anne QCPR, Resusci Baby QCPR, Little Junior QCPR and Little Anne QCPR.

- 170-30050 SkillGuide
- 123-30050 SkillGuide with extension cable

SimPad PLUS SkillReporter

Track, Measure and Improve CPR training.

SimPad PLUS with SkillReporter facilitates real-time feedback, records data and calculates overall performance for thorough training and debrief on CPR performance. It can be used for wireless control of up to 6 QCPR manikins simultaneously. BLS and ALS instructors can instantly identify and guide students struggling to perform Quality CPR.

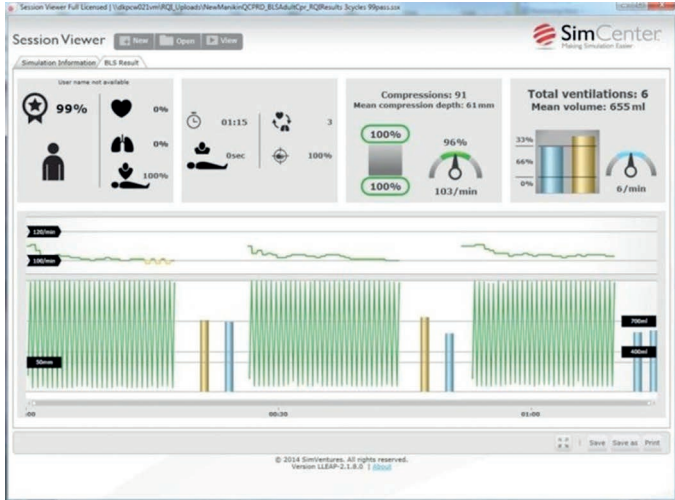
We've made improvements to the SimPad platform and are now offering SimPad PLUS with SkillReporter, which includes the same easy setup, intuitive operation, and integrated debriefing PLUS faster startup, and enhanced Wi-Fi connectivity.

- 206-300xx SimPad PLUS SkillReporter
- 206-50050 SkillReporter (SimPad Plus) SW License



Session Viewer

Session Viewer is a standalone BLS and ALS application for recording, viewing, and editing exported SimView™ debriefing files, LLEAP event logs, SimPad PLUS log files, and SimPad PLUS SkillReporter files.



SkillReporter (PC)

SkillReporter (PC) is the complete, easy-to-use Quality CPR training solution that your BLS program needs.

- 202-56050 SkillReporter (PC), software 3 licenses

QCPR Feedback Solutions



QCPR Instructor

NEW QCPR Instructor App

With this app, the instructor gets a performance overview of up to six manikins, simultaneously. Using their own observations and the objective feedback from the app, the instructor can quickly and effectively coach the learners to improve.



QCPR Learner

NEW QCPR Learner App

This app can be used by the learner and first aid instructors to practice on their own. Multiple learners can also use the app to coach each other.



| Features | SkillGuide | Learner app | Instructor app | PC SkillReporter | SimPad Plus SkillReporter |
|------------------------------------|------------|-------------|----------------|------------------|---------------------------|
| QCPR Feedback | × | × | × | × | × |
| Compression depth | × | × | × | × | × |
| Compression rate | × | × | × | × | × |
| Recoil | × | × | × | × | × |
| Ventilation volume | × | × | × | × | × |
| Flow fraction | × | × | × | × | × |
| Hand Placement | × | | | × | × |
| Meet 2019 AHA Feedback Requirement | × | × | × | × | × |
| Multi-manikin | | | × | × | × |
| Wireless Connectivity | | × | × | × | × |
| Scenario Training | | | | | × |
| AED Training | | | | | × |
| Assessment | × | × | × | × | × |
| Full Debriefing Details | | | | × | × |
| Session Timeline | | | | × | × |
| Score | | × | × | × | × |
| Export Data | | | | × | × |
| Upload to session viewer | | | | | × |

¹Not when used with Little Anne QCPR and/or Little Junior QCPR
²OK- and Too Much volume
³Meets minimum standard for AHA Feedback requirement
⁴Meets optimum standard for AHA Feedback requirement



SimPad PLUS SkillReporter

Resusci Anne QCPR

Since 1960, Resusci Anne has been the preferred CPR training manikin of healthcare professionals and helped to train more than 400 million people in critical life saving skills.

An estimated 2 million lives have been saved.

Consumables

- 310210 Face Skin (6-Pack)
- 310220 Face Skin, decorated (6-Pack)
- 152250 Airways (24-Pack)
- 152250 Airways (24-Pack)

15120103 Manikin Face Shields (6 rolls of 36 each)



Available feedback solutions include: SimPad PLUS SkillReporter; QCPR Apps and SkillGuide. For more information see page 16-19.

Resusci Anne QCPR is available in the following main configurations

| Torso | Full Body | Name | Description |
|-----------|-----------|--------------------------|----------------------------------------------------------------------------------------------|
| 171-00150 | 171-01250 | Resusci Anne QCPR | QCPR adult manikin for use with feedback devices |
| 172-00150 | 172-01250 | Resusci Anne QCPR AW | QCPR adult manikin with airway head for use with feedback devices |
| 173-00150 | 173-01250 | Resusci Anne QCPR AED | QCPR adult manikin for use with feedback devices, AED Trainer and ShockLink |
| 174-00150 | 174-01250 | Resusci Anne QCPR AED AW | QCPR adult manikin with airway head for use with feedback devices, AED Trainer and ShockLink |

NEW Resusci Junior QCPR

Now with QCPR feedback technology, to help instructors improve CPR training quality, efficiency, and learner engagement.



181-00150 Resusci Junior QCPR Full body in carry bag.
Includes; 3 face masks, 2 airways, 3 x 6 Manikin Wipes,
USB-C to USB-A cable (connect to PC)

Consumables

- 183010 Junior Faces (6-Pack)
- 183210 Airways, complete (25-Pack)
- 183211 Airways, complete (100-Pack)
- 15120103 Manikin Face Shields
(6 rolls of 36 each)



Resusci Baby QCPR

Resusci Baby QCPR provides detailed real-time and summative information when used with feedback devices. The detailed feedback and debriefing functionalities enable students to learn and improve CPR performance better than ever before.

Realistic anatomy ensures a learner performs correct head tilt, chin lift and experiences appropriate chest resistance and chest rise. A sensor indicates correct hand placement.



161-01250 Resusci Baby QCPR - full body in suitcase

Consumables

- 143600 Resusci Baby Faces (6-Pack)
- 15120103 Manikin Face Shields rolls of 36
- 161-10005 Disposable lung (10-Pack)
- 161-10550 Disposable airway (5-Pack)



NEW Little Anne QCPR

Now with QCPR feedback technology, to help instructors improve CPR training quality, efficiency, and learner engagement.

123-01050 Little Anne QCPR
123-03050 Little Anne QCPR Dark

Consumables

020300 Little Anne Airways (24-Pack)
020301 Little Anne Airways (96-Pack)
310210 Manikin Faces (6-Pack)
310215 Manikin Faces, Dark Skin (6-Pack)



123-30050 SkillGuide with Extension Cable



Available feedback solutions include:
QCPR Apps and SkillGuide.
For more information see page 16-19.



124-01050 Little Anne QCPR 4-Pack
124-03050 Little Anne QCPR Dark 4-Pack

Upgrade your Little Anne



The Upgrade Kit contains everything you need to enable your Little Anne to become QCPR compatible.

123-60750 Little Anne QCPR Upgrade Kit

Little Anne AED

Little Anne AED offers all the essential features necessary for learning adult CPR, defibrillation and defibrillator pad placement. Little Anne AED is compatible with AED Trainer 2, AED Trainer 3 and ShockLink.

122-01050 Little Anne AED
198-00150 AED Trainer 3
945090 AED Trainer LINK Pads
940050xx Laerdal AED Trainer 2



NEW

Little Junior QCPR

Now with QCPR feedback technology, to help instructors improve CPR training quality, efficiency, and learner engagement.

Upgrade your Little Junior



The Upgrade Kit contains everything you need to enable your Little Junior to become QCPR compatible.

128-60750 Little Junior QCPR Upgrade Kit



Available feedback solutions include: QCPR Apps and SkillGuide. For more information see page 16-19.

- 128-01050 Little Junior QCPR
- 129-01050 Little Junior QCPR 4-pack
- 128-03050 Little Junior QCPR Dark
- 129-03050 Little Junior QCPR Dark 4-pack
- 128-50750 Little Junior QCPR Upgrade Kit

Consumables

- 183210 Junior Airways (25-Pack)
- 183211 Junior Airways (100-Pack)
- 15120103 Manikin Face Shields (6 rolls of 36 each)



123-30050 SkillGuide with Extension Cable

NEW

Baby Anne

Baby Anne provides effective infant CPR training without compromising realism or quality of chest compressions and ventilations.



- 130-01050 Baby Anne
- 130-03050 Baby Anne Dark
- 131-01050 Baby Anne 4-Pack
- 131-03050 Baby Anne 4-Pack Dark

Consumables

- 130-10150 Baby Anne Airways 24-Pack
- 130-10450 Baby Anne Faces 6-Pack
- 130-10550 Baby Anne Dark Faces 6-Pack
- 130-10850 Baby Anne Foreign Objects 10-Pack

Little Family Pack

The Little Family Pack is an all-in-one, realistic and inexpensive training solution with a focus on quality CPR.

It is designed to reflect the realistic anatomical differences between an adult, a child and an infant.

The new Little Family Pack comes complete with one Little Anne QCPR, one Little Junior QCPR, and one Baby Anne and a large bag on wheels to carry them.

- 125-01050 Little Family Pack
- 125-03050 Little Family Pack Dark Skin



Mini Anne

Learn core CPR skills in 30 minutes. This innovative self-directed learning program allows families, friends and the general public – those who most likely would never attend a traditional CPR course and most often witness a cardiac arrest – to learn the core skills of CPR, or CPR-AED, in 30 minutes.

- 103-09000 MiniAnne, Generic G2010 English
- 103-90000 MiniAnne, ERC Multi-Lingual, G2010



Mini Anne Plus

Mini Anne Plus is a cost-effective solution for teaching quality CPR using durable and reusable manikins. Ten individual manikins are included in each set, increasing student hands-on time during training. The innovative new pump bag provides a simple, hygienic inflation method. Mini Anne Plus includes everything to get your CPR programme up and running in one convenient bag.



- 106-00350 Mini Anne Plus (single) Light Skin
- 106-00450 Mini Anne Plus (single) Dark Skin
- 106-00150 Mini Anne Plus (10-Pack) Light Skin
- 106-00250 Mini Anne Plus (10-Pack) Dark Skin

Newborn Anne

The Newborn Anne is a manikin designed for skills training in neonatal resuscitation. With anatomical accuracy and product features designed to focus on the critical resuscitation skills required in the first ten minutes of a newborn's life, Newborn Anne meets the key components of the Neonatal Resuscitation Program and most other neonatal clinical training curricula.

220-25050 Newborn Anne

Consumables

- 250-21050 Airway Lubricant (45 ml)
- 240-00250 Simulated Umbilical Blood
- 220-00150 Newborn Anne Umbilical Cords (4)
- 220-00350 R/L IO Leg Skin and Leg Replacement Kit

Resusci Anne Rescue and Trauma Modules

Add-on modules for any Resusci Anne manikin

The practice of first aid and trauma skills has become an important and integral part of many CPR and CPR-D courses. Our Rescue and Trauma modules are designed specifically to support practice of the important skills of first aid and trauma management.



312025 IV Arm Resusci Anne Manikin



312000 Rescue Module with Soft Pack



316000 Airway Head

310300 Arms/Soft Legs in Soft Pack for Resusci Anne



312050 First Aid/Trauma Module with Soft Pack

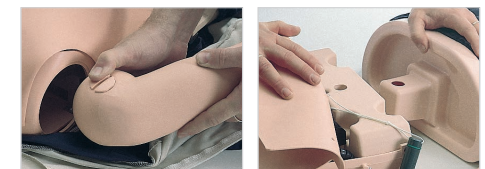


312052 Left Leg Assembly with Wounds

312053 Right Leg Assembly with Wounds



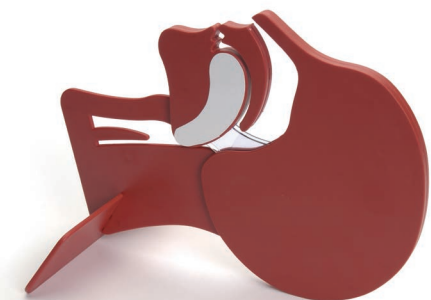
090050 Bleeding Control Leg Module



Simple arm and leg attachments allow you to build the manikin of your choice within seconds. No tools required.

Head Section model

010900 Head Section Model





NEW CPRmeter 2

The CPRmeter 2 with QCPR technology provides real-time coaching and summative feedback to help rescuers optimize CPR performance in a clinical setting. Combined with the new CPRmeter app, organizations can now drive quality improvement initiatives with detailed and sharable insights on CPR performance.

801-00249 CPRmeter 2

Consumables

801-10850 Patient Adhesives
(10 × 3-Pack)

801-10950 Large Patient Adhesive
(10 × 3-Pack)

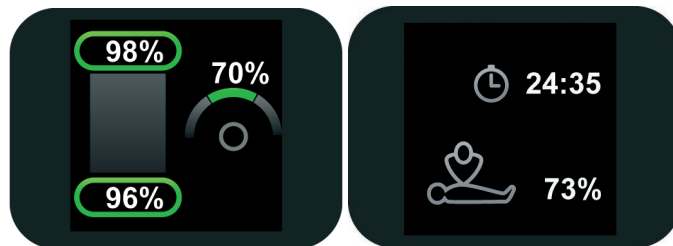
Spare Parts

801-10360 Battery Hatch w/ Landyard
Replacement A (3-pack)

801-10370 Battery Hatch
Replacement B (3-pack)

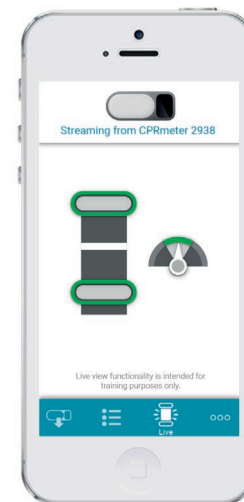
Accessories

801-10150 Red Sleeve

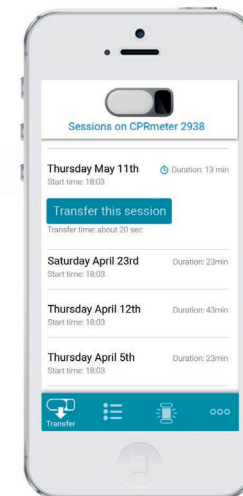


Q-CPR Quick Review events statistics

CPRmeter app



Live streaming data from the CPRmeter 2 provides valuable performance feedback for instructors during training.



Using the app, you can access and view stored session on the CPRmeter 2.



By rotating the view within the app, providers can examine visual feedback of their clinical or training performance. This detailed view delivers insights on the depth, release, rate, and force of each compression. In addition, providers can annotate important events such as obtaining Return of Spontaneous Circulation.



ShockLink

ShockLink allows you to connect live defibrillators to training manikins, creating more realistic BLS and defibrillation training.

Connect ShockLink to training pads and a standard defibrillator to begin training. The shock energy from a defibrillator is defused in the ShockLink cable.

This solution means that you can train on most manikins, removing the need for specialized defibrillator training manikins with chest-studs or a load box to absorb the shock.

185-10050 ShockLink System

Consumables

- 198-80150 ShockLink Training Pads
- 198-80450 Pediatric Training Pads Multi
- 185-00350 Remote Control ShockLink
- 185-20050 ShockLink only
- 185-21050 Battery Lid ShockLink
- 185-00450 Pouch ShockLink



ShockLink app



Resusci Manikins and Feedback Devices Accessories and Consumables

| Resusci Anne Consumables | | QCPR Manikins Accessories | |
|----------------------------|------------------------------------------------------------------------------|-------------------------------|-------------------------------------------|
| Cat no | Resusci Anne Replacement Lungs (24-Pack) | Cat no | SkillGuide |
| 152250 | | 170-30050 | SkillGuide |
| | | 123-30050 | with extension cable |
| 310220 | Resusci Anne Faces (6-Pack) | 202-300xx | SimPad SkillReporter |
| 170-50550 | Set of extra compression springs 30 kg and 60 kg | 202-40050 | Multi Manikin Router |
| | | 171-10010 | 5V USB Wall Adapter |
| | | 202-40100 | Stand for SimPad |
| | | 202-40200 | USB Cable Manikin to PC |
| 170-50750 | Battery upgrade kit RA QCPR | 202-40210 | USB Cable Manikin to SimPad |
| 200-30350 | Laerdal Li-Ion Battery | 202-40220 | USB Cable SimPad to PC |
| 220-10250 | Power Supply 9V/15W | | |
| Accessories | | QCPR AED Manikins Accessories | |
| | | Cat no | AED Trainer 3 |
| | | 198-00150 | |
| | | 989803150181 | Replacement Pads HS III |
| | | 989803150201 | Interconnect cable |
| | | 940050xx | Laerdal AED Trainer 2 |
| | | 945090 | Laerdal LINK Training Pads |
| | | 07-10900 | Standard Adult Training Pads |
| Resusci Junior Consumables | | QCPR D Manikins Accessories | |
| Cat no | Airways Complete (25-Pack) | Cat no | Defib Training Cable HS |
| 183210 | | 151-945006 | |
| 183211 | Airways Complete (100-Pack) | | |
| 183010 | Junior Face mask (6-Pack) | | |
| 184600 | Choking Kit | | |
| 184610 | Choking Objects (5-Pack) | | |
| Accessories | | QCPR D Manikins Accessories | |
| | Water Rescue Update Kit | Cat no | Defib Training Cable HS |
| 184010 | | 151-945006 | |
| Resusci Baby Consumables | | Miscellaneous Consumables | |
| Cat no | Resusci Baby Disposable Airway (24-Pack) | Cat no | Manikin Face Shields (6 rolls of 36 each) |
| 160-10150 | | 15120103 | |
| | For manikins purchased after September 2013 | 250-21050 | Airway Lubricant (45 ml) |
| 160-10250 | Resusci Baby Disposable Airway (96-Pack) | 152400 | Manikin Wipes (50-Pack) |
| | For manikins purchased after September 2013 | 152401 | Manikin Wipes (1200-Pack) |
| | | | |
| 143700 | Resusci Baby Airways (24-Pack), for manikins purchased before September 2013 | Cat no | ShockLink |
| 1437001 | Resusci Baby Airways (96-Pack), for manikins purchased before September 2013 | 185-10050 | ShockLink System |
| | | | |
| 143600 | Resusci Baby Faces (6-Pack) | Consumables | |
| | | 185-50050 | Training Adapter QUIK-COMBO |
| | | 185-50350 | Training Adapter Corpuls |
| | | 185-50450 | Zoll ShockLink Training adapter |
| | | 198-80150 | ShockLink Training Pads |
| | | 198-80450 | Pediatric Training Pads Multi |

AED Trainer 3

A fast, accurate response from trained responders when treating the cardiac arrest patient is essential if successful patient outcomes are to be achieved.

The AED Trainer 3 is the ultimate preparation tool for trained responders facing cardiac arrest.

- 198-00150 AED Trainer 3, with carry case
- 198-00650 AED Trainer 3, without carry case
- 198-10450 AED Trainer 3 soft bag



| | | | |
|--------------|-----------------------------------------|-----------|--------------------------------------|
| Consumables | | | |
| 989803150181 | HeartStart Training Pads III | 198-10050 | Hard Carry Case |
| 989803150201 | HeartStart Training Pads III | 198-10250 | 1GB Operating System Card w/software |
| | Interconnect Cable | | |
| 945090 | AED Trainer LINK Pads | M5089A | External Manikin Adapters (5-Pack) |
| 198-00350 | Remote Control (with CR2025 3V battery) | | |

Laerdal AED Trainer 2

The Laerdal AED Trainer 2 offers an affordable alternative for educating the layperson and healthcare provider in the effective use of an automatic external defibrillator (AED).

The realistic AED trainer simulates the HeartStart FR2 AED in appearance, operation, and voice prompts.

- 94005001 Laerdal AED Trainer 2
- 945050 Remote Control
- 945055 Programming Kit
- 945030 Carry Case AED Trainer 2



| | |
|-------------|----------------------------------|
| Consumables | |
| 198-80550 | AED Trainer Pads |
| M3871A | Standard Pediatric Training Pads |
| 945090 | AED Trainer LINK Pads |

HeartStart AED Trainer

The HeartStart AED Trainer simulates how the HeartStart HS1 will operate during a real-life sudden cardiac arrest event.

M5085A-ABA HeartStart AED Trainer



HeartStart FRx Trainer

A training device that looks and behaves like the actual FRx defibrillator but does not actually deliver electric shocks. Used to train users on how to use the FRx defibrillator to respond to a sudden cardiac arrest emergency.

861304 ABU HeartStart AED FRx

- Consumables
- 198-80150 ShockLink Training Pads
- 198-80450 Pediatric Training Pads Multi





Simulation & Training

Emergency Care & Trauma

Our simulation and training solutions are designed to enhance clinical decision making and interprofessional team training in emergency care and trauma.

They also feature responsive physiology that enable realistic, accurate practice.

SimMan 3G

An emergency patient simulator that can help improve critical time management, decision making, communication and hand-overs between departments.

Delivering high quality simulation experiences requires training to take place at the right time and place, and requires the most appropriate equipment. In order to meet new challenges and facilitate the growing demand for in-situ and multidisciplinary training, the need for flexible training solutions is critical.

- 212-023xx SimMan 3G Manikin and accessories
- 400-102xx Laptop Instructor - Patient Monitor
- 400-092xx Tablet-PC Instructor - Patient Monitor
- 400-095xx Rugged-Tablet
Instructor - Patient Monitor
- 400-293xx All In One Panel PC
Instructor - Patient Monitor

xx = Language versions

- Optional
- 400-96050 USB HD WEB CAM



Available in Light, Medium, and Dark Skin Tones *

* Part numbers listed represent light skin tones only unless otherwise specified. See your local representative for details and part numbers for other skin tone versions.

SimMan

SimMan 3G Trauma

SimMan 3G Trauma is designed to train emergency medical personnel in trauma situations such as hemorrhage control. The durable configuration provides you with the flexibility to perform simulations in the environment that suits your needs.

- 219-020xx SimMan 3G Trauma Manikin and accessories
- 400-102xx Laptop
Instructor - Patient Monitor
- 400-092xx Tablet-PC
Instructor - Patient Monitor
- 400-095xx Rugged-Tablet
Instructor - Patient Monitor
- 400-293xx All In One Panel PC
Instructor - Patient Monitor

- Optional
- 400-96050 USB HD WEB CAM

xx = Language versions



NEW ASL 5000 Lung Solution

Advanced Ventilator Management Training for SimMan 3G, SimMan 3G Trauma, SimMan Essential and SimMan Essential Bleeding.

This collaboratively developed solution integrates IngMar Medical's ASL 5000 Breathing Simulator with Laerdal Medical's SimMan 3G, SimMan Essential, SimMan Essential Bleeding, and SimMan 3G Trauma.

- 212-11950 ASL 5000 Lung Adapter; adapter and LLEAP plugin
- 212-11955 ASL 5000 Lung Solution Adapt.Plugin, ASL5000



SimMan Essential

A realistic, full-body adult, wireless patient simulator, SimMan Essential offers comprehensive clinical functionality to teach the core skills of airway, breathing, cardiac and circulation management.

- 213-0230xx SimMan Essential Manikin and accessories
- 214-020xx SimMan Essential Bleeding Manikin and accessories

- 400-102xx Laptop Instructor - Patient Monitor
- 400-092xx Tablet-PC Instructor - Patient Monitor
- 400-095xx Rugged-Tablet Instructor - Patient Monitor
- 400-293xx All In One Panel PC Instructor - Patient Monitor

- Optional
- 400-96050 USB HD WEB CAM

xx = Language versions



Available in Light, Medium, and Dark Skin Tones *

* Part numbers listed represent light skin tones only unless otherwise specified. See your local representative for details and part numbers for other skin tone versions.

SimMan ALS

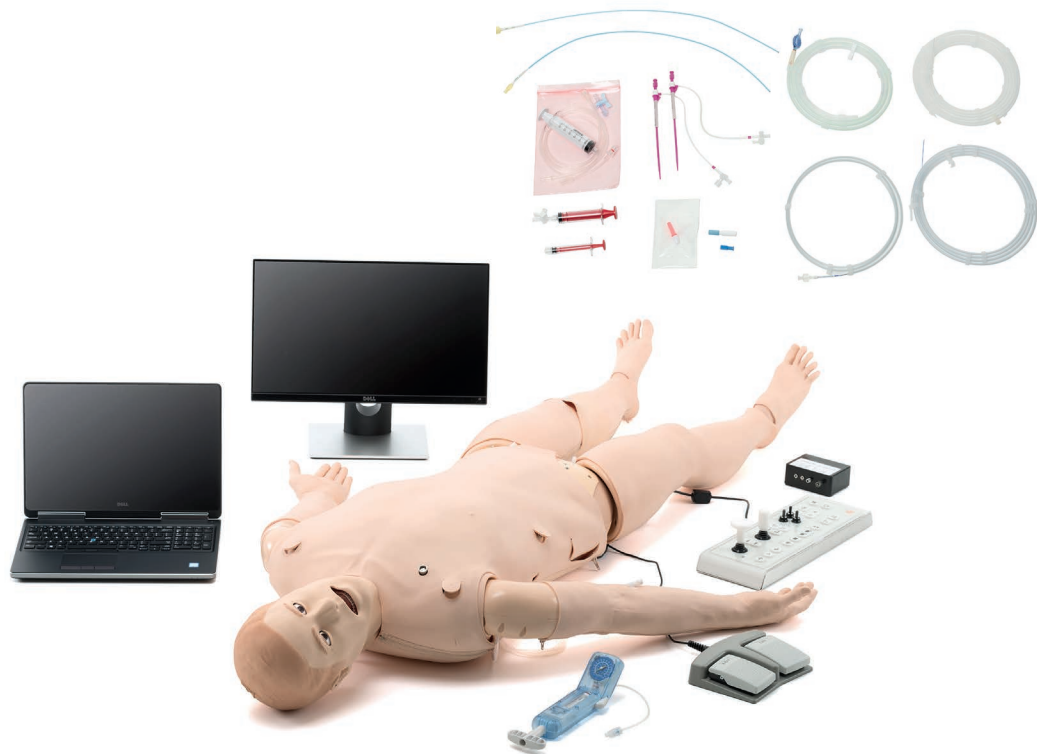
SimMan ALS provides a mobile, durable solution that will meet the training needs of pre-hospital and in-hospital emergency care providers from basic assessment to advanced life-support skills.

- | | | | |
|-----------|-------------------------------|-----------|--------------------------------------------------|
| 205-050xx | ALS Simulator and accessories | 400-102xx | Laptop Instructor - Patient Monitor |
| 204-301xx | SimPad PLUS LLEAP | 400-092xx | Tablet - PC Instructor - Patient Monitor |
| | | 400-095xx | Rugged-Tablet Instructor - Patient Monitor |
| | | 400-293xx | All In One Panel PC Instructor - Patient Monitor |
| | | 400-01050 | LLEAP software License |
| | | 400-970xx | Network Switch |

xx = Language versions



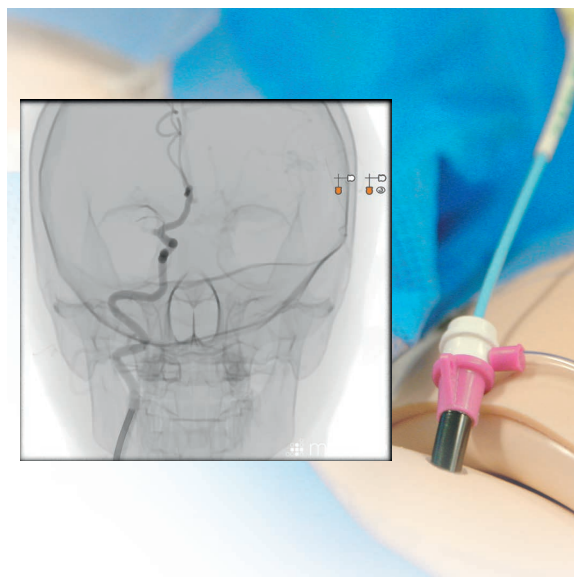
SimMan



NEW SimMan Vascular

SimMan Vascular has all the functionality of the SimMan family and now includes Mentice's VIST technology to extend the immersive training course potential to Endovascular Specialists, Cath Lab team and Pre-Hospital care providers.

222-02050 SimMan Vascular
223-02050 SimMan Vascular Essential



 mentice



VitalsBridge

Bridge the gap between simulation and real clinical equipment. The VitalsBridge simulator interface makes it possible to use your own clinical patient monitor during simulation training.

405-00150 VitalsBridge Model 100
405-00250 VitalsBridge Model 200
405-00350 VitalsBridge Model 300





Advanced training in all aspects of pediatric care

SimBaby is a tetherless simulator designed to help healthcare providers effectively recognize and respond to critically ill pediatric patients. The SimBaby simulator represents a 9-month-old pediatric patient and provides a highly realistic manikin that meets specific learning objectives focusing on initial assessment and treatment.

- 246-00050 SimBaby (light) Manikin Only
- 246-00150 SimBaby (medium) Manikin Only
- 246-00250 SimBaby (dark) Manikin Only
- 246-EDGS100 Getting Started with SimBaby
- 246-83050 Installation SimBaby
- 246-00001LNR Loaner Program 1 yr
- 246-00050EXW1 Extended Warranty 1 yr
- 246-00050PMC Preventative Maintenance
- Customer Site
- 246-00050PMR Preventative Maintenance
- Return to Bench

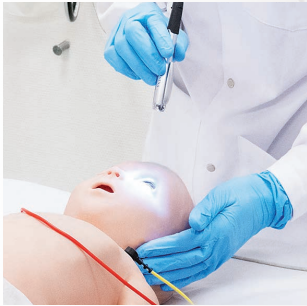


Available in Light, Medium,
and Dark Skin Tones *

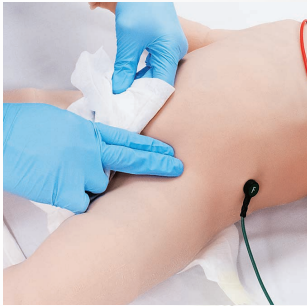
* Part numbers listed represent light skin tones only unless otherwise specified. See your local representative for details and part numbers for other skin tone versions.



Assess capillary refill time



Test pupillary light reflex



Check bilateral pulses





Laerdal-SonoSim® Ultrasound Solution

Laerdal and SonoSim proudly announce the integration of the SonoSim Ultrasound Training Solution into the Laerdal patient simulator platform, starting with the SimMan family and SimMom. This means you can now include diagnostic ultrasound featuring real ultrasound cases with pathological findings into full-scale simulations.

Ultrasound is a safe, portable, and non-invasive way to gain clinically relevant information. Informed decisions can be made in a rapid and cost-effective manner.

- 390-00150 Laerdal-SonoSim Ultrasound Solution SimMan 3G upgrade kit probe, SoftWare, tags
- 390-00250 Laerdal-SonoSim Ultrasound Solution SimMom upgrade kit skins (3), foams (2), tag
- 390-00350 Laerdal-SonoSim Ultrasound Solution SimMan ALS probe and SoftWare



SonoSim Ultrasound Training Solution

The SonoSim® Ultrasound Training Solution is a breakthrough product designed to simplify ultrasound education by providing integrated didactic instruction, hands-on training, and knowledge assessment.



- 390-00050 SonoSim Edition computer and probe
- 390-10054 SonoSim LiveScan LiveScan probe and tags

NEW Laerdal-SonoSim Procedure Trainer

The Laerdal-SonoSim Procedure Trainer allows learners the ability to perform ultrasound guidance with real-patient data on multiple body physiologies and 20 real ultrasound data sets. This trainer gives users the opportunity to develop the critical psychomotor skills that will serve as a foundation for future ultrasound-guided interventions in a safe, simulated, and highly realistic ultrasound environment using only a laptop, simulated transducer, needle and training torso.



- 310-00050 Laerdal-SonoSim Procedure Trainer (For customers who do not have the Laerdal-SonoSim Ultrasound Solution)
- 310-00150 Laerdal-SonoSim Procedure Trainer Upgrade (For customers who do have the Laerdal-SonoSim Ultrasound Solution)



SimJunior

SimJunior is an interactive pediatric simulator, designed by Laerdal with the American Academy of Pediatrics to meet the education and training needs of healthcare providers.



Available in Light, Medium, and Dark Skin Tones *

* Part numbers listed represent light skin tones only unless otherwise specified. See your local representative for details and part numbers for other skin tone versions.

232-05050 SimJunior Manikin Only
232-05050B SimJunior Manikin Only - brown
232-05050T SimJunior Manikin Only - tan

204-30250 SimPad PLUS Link Box
400-01050 LLEAP software License
400-102xx Laptop
Instructor - Patient Monitor
400-092xx Tablet-PC
Instructor - Patient Monitor
400-095xx Rugged-Tablet
Instructor - Patient Monitor
400-293xx All In One Panel PC
Instructor - Patient Monitor

xx = Language versions

Optional
400-96050 USB HD WEB CAM
200-30850 Headset Simpad
400-20050 Keyboard+Mouse USB (IE)
212-29650 Headset+Mic with USB
200-31050 SimPad clip on
204-30101 SimPad PLUS Only
204-301XX SimPad PLUS LLEAP

American Academy
of Pediatrics

DEDICATED TO THE HEALTH OF ALL CHILDREN™



Resusci Anne Simulator

Resusci Anne Simulator has been designed for the unique training needs of emergency care, in both pre-hospital and in-hospital environments - transforming the simulation exercise into a mobile and dynamic learning experience for both the instructor and the student.

150-210xx Resusci Anne Simulator
(For defibrillator with paddles)
150-220xx Resusci Anne Simulator AED-Link
(incl. ShockLink)

204-300xx SimPad PLUS

xx = Language versions

Consumables:

152400 Resusci Manikin Wipes (pkg.50)
250-21050 Airway Lubricant 45ml
300-00750 Red simulated blood
325-00350 Skin/vein; mv arm af-std



SimPad PLUS System required for operation. See pages 62-63 for more information. Sold separately.



Available in Light, Medium,
and Dark Skin Tones *

* Part numbers listed represent light skin
tones only unless otherwise specified.
See your local representative for details and
part numbers for other skin tone versions.

Resusci Anne Advanced SkillTrainer

Resusci Anne Advanced SkillTrainer offers high quality,
yet relatively low cost, advanced skills training.

- 151-210xx Resusci Anne Advanced SkillTrainer
(For defibrillator with paddles)
- 151-220xx Resusci Anne Advanced SkillTrainer AED-Link
(incl. ShockLink)

xx = Language versions

Consumables

- 152400 Resusci Manikin Wipes (pkg.50)
- 250-21050 Airway Lubricant 45ml
- 300-00750 Red simulated blood
- 325-00350 Skin/vein; mv arm af-std



SimPad PLUS System
required for operation.
See pages 62-63 for
more information.
Sold separately.

MegaCode Kelly

The advanced life support manikin for realistic training
focusing on a wide variety of advanced lifesaving skills
for pre-hospital emergencies from advanced airway
scenarios to IV therapy.

- 200-05050 MegaCode Kelly Advanced
(SimPad Capable)
- 203-05050 MegaCode Kelly Basic
(SimPad ECG Capabilities only)

Consumables

- 250-21050 Airway Lubricant (45 ml)
- 312029 Replacement Skin and Vein
System – Male
- 200-00250 Cricothyroid Membrane
Tape (1 Roll)
- 212-10250 IO Leg Skin
- 212-15250 Tibial IO Pad



SimPad Plus System
required for operation.
See pages 62-63 for
more information.
Sold separately.



MegaCode Kid

MegaCode Kid is a realistic manikin for training in a wide range of pediatric advanced life saving skills in pre-hospital emergencies.

- 231-05050 MegaCode Kid Advanced
(SimPad Capable)
- 231-15050 ECG Kid
(SimPad ECG Capabilities only)

- Consumables
- 250-21050 Airway Lubricant (45 ml)
 - 375-70150 Replacement Skin and Vein System



Available in Light, Medium, and Dark Skin Tones *

* Part numbers listed represent light skin tones only unless otherwise specified. See your local representative for details and part numbers for other skin tone versions.



SimPad PLUS System required for operation. See pages 62-63 for more information. **Sold separately.**



Laerdal ALS Baby

The Laerdal ALS Baby is a portable skill trainer for realistic infant resuscitation training. It represents a three-month-old infant with an anatomy that offers exceptional realism for individual training.

It also offers the opportunity to practice advanced resuscitation skills, including airway management, professional rescuer CPR, vascular access, and 4-lead ECG monitoring.

- 080030xx Laerdal ALS Baby (Manikin only)
- 080031xx Laerdal ALS Baby 200 (Complete)

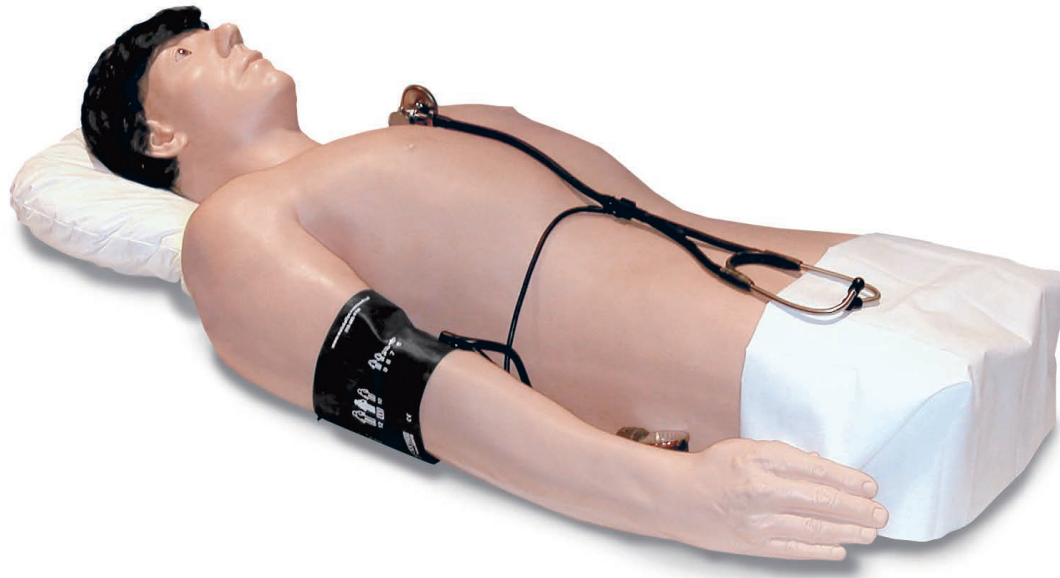
- 260010 HeartSim 200 Cardiac Rhythm Simulator

xx = Language versions

- Consumables
- 250-21050 Airway Lubricant (45 ml)
 - 082305 Leg Replacement Pads (5-Pack)
 - 082025 Lungs/Stomach (6-Pack)



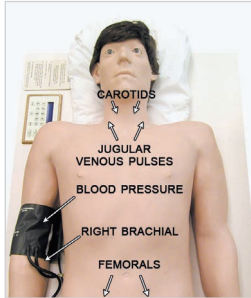
HeartSim 200 Cardiac Rhythm Simulator can be purchased separately.



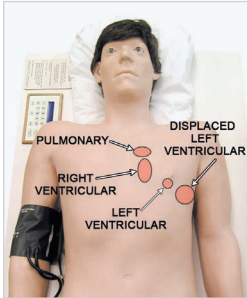
Harvey The Cardiopulmonary Patient Simulator

Next generation Harvey® - The Cardiopulmonary Patient Simulator realistically simulates nearly any cardiac disease at the touch of a button by varying blood pressure, pulses, heart sounds, murmurs and breath sounds.

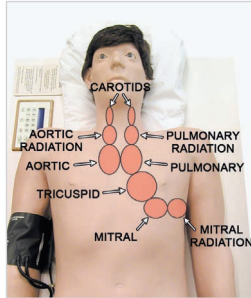
HARVEY The Cardio Patient Sim w/ 1yr OEM Warranty



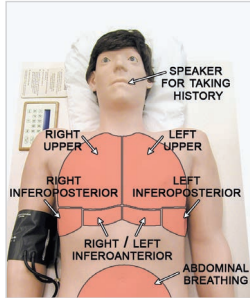
Venous and Arterial Pulses



Precordial Movement



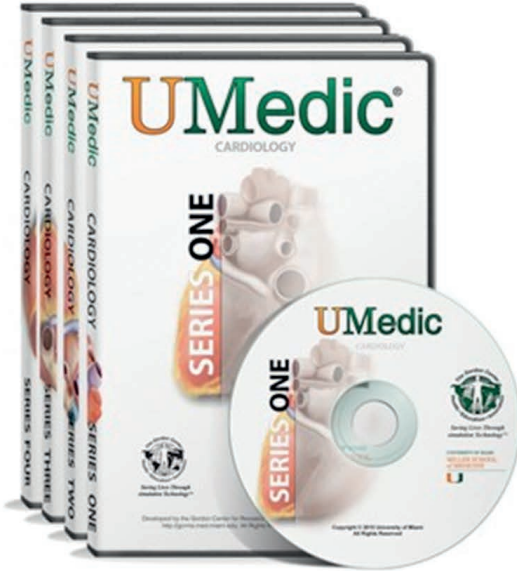
Cardiac Auscultation

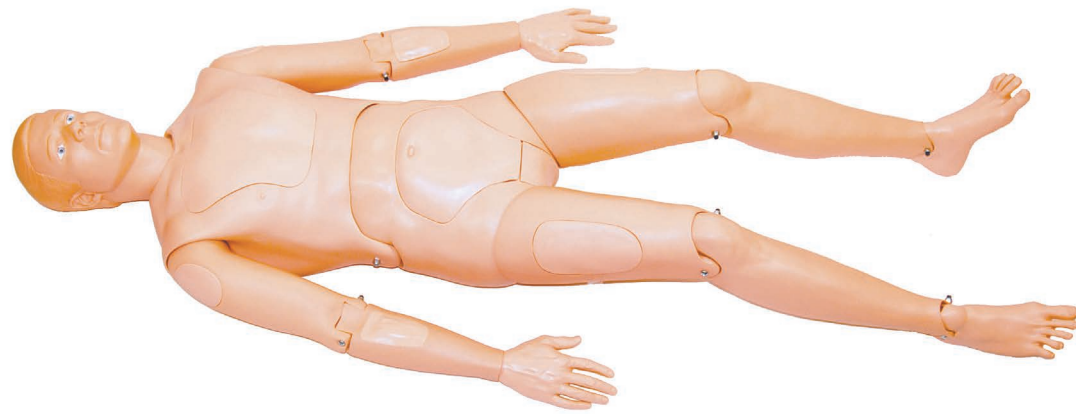


Pulmonary Auscultation

UMedic Cardiology Curriculum

The UMedic Multimedia Computer Curriculum is a patient-centered system that has been shown to enhance the learner's bedside examination skills while also teaching patient histories, laboratory data and treatment. Bedside skills in UMedic are taught through video demonstrations of Harvey®, The Cardiopulmonary Patient Simulator; a full-size manikin that simulates the physical findings of essentially any cardiac disease.





Extri Kelly

Extri Kelly is a durable, rugged, fully articulated training manikin ideal for extrication and rescue exercises.

101-10001 Extri Kelly



Crash Kelly

The manikin which combines training in extrication with airway management.

201-10001 Crash Kelly

Consumables
250-21050 Airway
Lubricant 45 ml



SimCenter

Creating an Environment for Success in Simulation

SimCenter makes your simulation experience easier and more rewarding than ever. For the simulation novice to sophisticated developers, SimCenter has the tools and services to help every user realize their full potential.





LLEAP Overview

LLEAP unifies the control of all PC operated Laerdal simulators as well as simulations with standardized patients and task trainers. LLEAP brings simplicity to running simulation training and efficiencies to the management and development of scenarios.

What are the benefits to LLEAP?

✓ Save Time

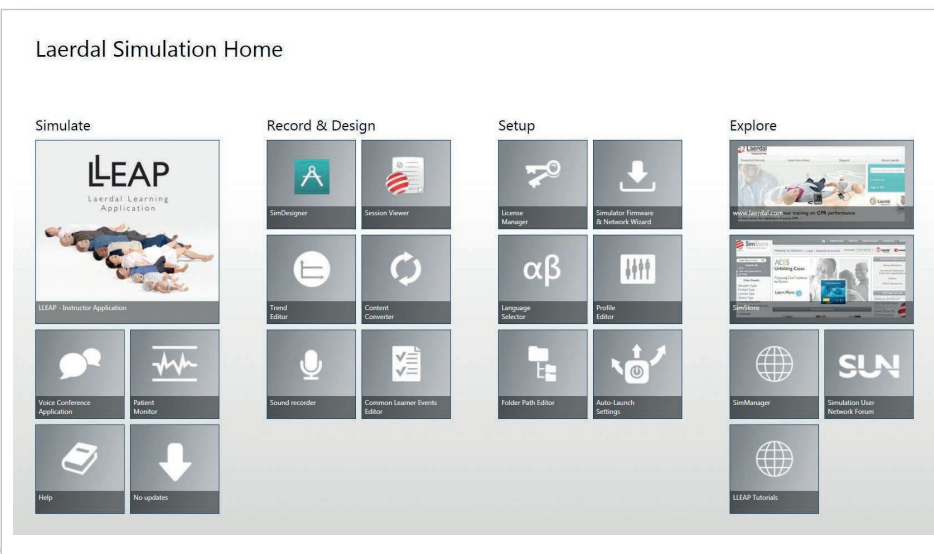
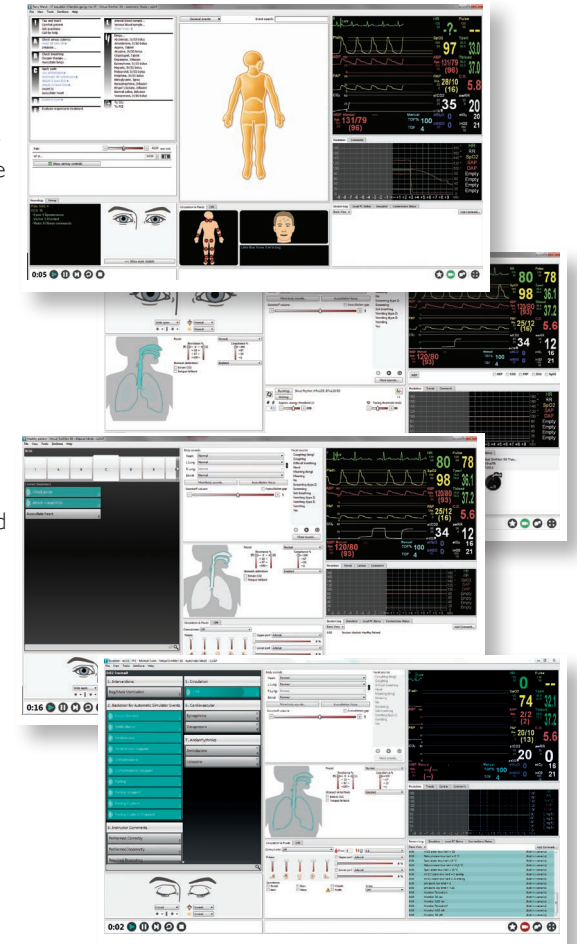
LLEAP looks and behaves like a single unified platform, thus reducing time spent training on multiple platforms. System capabilities are fully integrated and ready to use from a variety of interfaces from PC-operated simulators to standardized patients.

✓ Reduce Cost

Reduce scenario development time and scenario purchase costs. Scenarios designed for LLEAP or SimPad simulators can be shared with minimal or no additional development time. Use self-authored scenarios or SimStore content for a standardized, reproducible training experience.

✓ Improve Efficiency

The LLEAP interface is based upon proven SimMan 3G software but incorporates brand new functionality such as faster, more intuitive event registration, automatic updates when connected to the internet, and built-in video tutorials to help simplify simulation for faculty and staff.



SimView™ Mobile

SimView™ Mobile is the portable resource for an integrated capture and debriefing system. SimView Mobile can be easily transported and set-up to enable you to record audio, three video streams, and a patient monitor stream in one debriefing file.





SimPad PLUS System

SimPad PLUS is an operating device used to control Laerdal manikins and simulators and can be used with task trainers and standardized patients. It allows instructors, new or experienced, to deliver highly effective simulation-based training.



SimPad PLUS improvements

User Experience



Our new hardware gives you a more responsive interface and a shorter boot time, allowing you to get started faster.

Bluetooth connection



Required for the operation of Premature Anne

WiFi Connection



Faster data rates, fewer disconnects, and a more enjoyable user experience with dual-band wireless networking.

When simulation tools are easy to use, teaching becomes more effective

With its intuitive touch screen interface, mobile design, easy-to-operate scenarios and integrated data log, SimPad PLUS will help you achieve learning objectives with greater ease.



204-300xx SimPad PLUS System

Includes: SimPad PLUS Handheld Remote Control, SimPad PLUS Link Box, Lithium Ion Battery, AC Adapter and Power Cord, USB Cable, Ethernet Cable, Wrist Strap, SimPad PLUS Protective Sleeve, SimPad PLUS Name tags, Manikin Strap, Headset, Microphone and Quick Start Guide.

Note:
The LLEAP for SimPad PLUS Software (204-50150) is required for operation.

xx = Language versions

| | |
|-------------|------------------------------------------------------------|
| 400-092xx | Tablet-PC Instructor - Patient Monitor |
| 400-095xx | Rugged Tablet Instructor - Patient Monitor |
| 400-102xx | Laptop LLEAP Instructor - Patient Monitor (Touchscreen) |
| 400-293xx | All-In-One Panel PC (US) Instructor - Patient Monitor |
| 204-30001PP | SimPad PLUS Protection Plan |
| 204-30002PP | SimPad Protection Plan Renewal 2 year Extension |

A woman with dark, curly hair, wearing a white lab coat, is leaning over a medical simulation manikin. She is looking intently at the manikin, which is lying on a gurney. The manikin is connected to various medical tubes and monitors. In the background, there is a medical monitor on a stand displaying vital signs. The scene is set in a clinical or hospital environment.

Simulation & Training

Nursing & Patient Care

Realistic practice is the key to developing proficiency in patient care skills. Our manikins and trainers are designed to train learners in the care and management of a variety of in-hospital patients.



NEW Nursing Anne Simulator

Designed based on input from leading nursing educators from around the world, this engaging and robust platform enables nurses to practice a wide range of competencies both as a skills trainer and as a highly realistic female simulator. Learners can safely and realistically practice core nursing skills from basic assessments and critical thinking to advanced interventions.

320-05050 Nursing Anne Simulator

- 204-301xx SimPad PLUS LLEAP
- 400-102xx Laptop Instructor
 - Patient Monitor
- 400-092xx Tablet - PC Instructor
 - Patient Monitor
- 400-01050 LLEAP software License

xx = Language versions

Consumables

- 250-21050 Airway Lubricant (45ml)
- 300-00750 Simulated Blood 3 fl. oz - Red





Nursing Anne

Nursing Anne is a manikin designed for scenario-based training for the care and management of basic patient handling skills to advanced nursing skills.

325-05050 Nursing Anne for SimPad
325-20050 Nursing Anne Basic

Consumables

200-21050 Manikin Lubricant (45ml)
300-00750 Simulated Blood 3 fl. oz - Red



325-00750 Breast Exam Module



SimPad PLUS System can be used for operation. See pages 62-63 for more information.
Sold separately.



Available in Light, Medium, and Dark Skin Tones *

* Part numbers listed represent light skin tones only unless otherwise specified. See your local representative for details and part numbers for other skin tone versions.



325-00650 Mastectomy Module



325-00450 Fundus Skills and Assessment Module



325-00550 Wound Care Assessment Set - Female



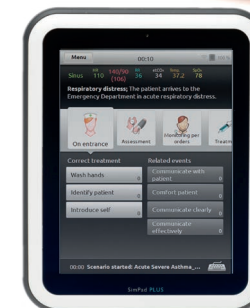
Nursing Kelly

Nursing Kelly is educationally effective for clinical training in basic to advanced patient care and management skills.

300-05050 Nursing Kelly for SimPad
300-20050 Nursing Kelly Basic

Consumables

250-21050 Manikin Lubricant (45ml)
300-00750 Simulated Blood 3 fl. oz - Red



SimPad PLUS System can be used for operation. See pages 62-63 for more information.
Sold separately.



Available in Light, Medium, and Dark Skin Tones *

* Part numbers listed represent light skin tones only unless otherwise specified. See your local representative for details and part numbers for other skin tone versions.



300-01050 Wound Care and Assessment - Male



375-81001 Arterial Stick Arm



Nursing Kid

The Nursing Kid is a training manikin realistically representing a six-year-old.

350-05050 Nursing Kid for SimPad

- Consumables
- 300-00750 Simulated Blood
 - 350-00750 Thigh Injection Pad
 - 375-70150 Skin and Vein System - Pediatric



277-00001 Pediatric Trauma Modules

231-00101 Pediatric Intraosseous Leg



SimPad PLUS System can be used for operation. See pages 62-63 for more information.
Sold separately.



Available in Light, Medium, and Dark Skin Tones *

** Part numbers listed represent light skin tones only unless otherwise specified. See your local representative for details and part numbers for other skin tone versions.*

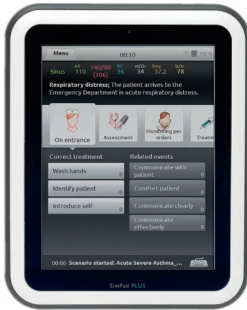


Nursing Baby

Nursing Baby is a full-size infant manikin that realistically simulates a 6-month old patient. It is specifically designed for training professionals in the practice of basic and advanced infant patient care procedures.

365-05050 Nursing Baby for SimPad

- Consumables
- 365-00201 Infant IO Leg
 - 365-00101 Infant IV Leg
 - 365-00301 Infant IV Arm



SimPad PLUS System can be used for operation. See pages 62-63 for more information.
Sold separately.



Available in Light, Medium, and Dark Skin Tones *

** Part numbers listed represent light skin tones only unless otherwise specified. See your local representative for details and part numbers for other skin tone versions.*

Interchangeable Catheterization and Enema Trainer

The Interchangeable Catheterization and Enema Trainer is a life-size female pelvis with interchangeable genitalia designed for practicing urologic and rectal access gastrointestinal care procedures.

375-21001 Catheterization and Enema Trainer

- 300-00150 Thigh Injection Pad
- 325-00250 Dorsal Gluteal Injection Pad – Female
- 325-00150 Ventral Gluteal Injection Pad – Female



Fundus Skills and Assessment Trainer

The Fundus Skills and Assessment Trainer features the normal anatomy of the status-post or postpartum female abdomen designed for training fundus assessment and massage skills.

375-22501 Fundus Skills and Assessment Trainer

- Consumables:
- 300-00750 Simulated Blood - Red
 - 375-22950 Urinary Valves, Fundus



In-Service Home Care Trainer

The In-Service Home Care Trainer is a life-size male pelvis with interchangeable genitalia designed for practice of urinary catheterization and enema procedures with the addition of stoma and wound care.

375-20001 In-Service Home Care Trainer

- Consumables
- 300-00150 Thigh Injection Pad
 - 300-00250 Ventral Gluteal Injection Pad - Male
 - 300-00350 Dorsal Gluteal Injection Pad - Male





Simulation & Training Maternal & Newborn

One of the most important objectives during labor and delivery is recognizing the potential risks to mother and baby. We provide solutions that build competency to ensure teams and individuals deliver high quality patient care, manage adverse events and impact patient outcomes.

NEW SimMom

The new tetherless SimMom provides an opportunity for cross-functional team training in any environment from ER to Labor and Delivery (L&D), for both novice learners and health-care providers alike to practice and prepare for critical events so that more lives can be saved.

Expand your simulations with the flat abdominal skin which allows greater versatility during simulation training to address simple general women's health care and complex obstetrical scenarios. By adding the optional Laerdal SonoSim Ultrasound Solution, SimMom allows you to expand the scope of your educational curriculum by integrating diagnostic training and assessments. Educators can reinforce an integrated approach for learners from all health professions, across the educational spectrum.

377-03050 SimMom tetherless
377-05350 ADM2 for SimMom tetherless



An optional Ultrasound Solution has been embedded to gravid and non-gravid abdomen skins to help improve point-of-care diagnostics training, and visually determine the health of the fetus and mother.



- Instructor and Patient Monitor PC's
- 400-102XX* Laptop
 - 400-293XX* All In One Panel PC
 - 400-092XX* Tablet
 - 400-095XX* Rugged-Tablet

- Recommended Accessories
- 377-21050 SimMom Flat Belly + Foam
 - 400-96050 USB HD WEB CAM
 - 212-29650 Headset+Mic with USB
 - 400-20050 Keyboard+Mouse USB (IE)
 - 212-17050 SpO2 probe w/USB connector

- Optional Accessories
- 212-17950 Case soft, torso
 - 212-18050 Case soft, legs
 - 151-945006 Defib Training cable HS
 - 390-102xx Laerdal SonoSim Laptop with SW
 - 350-00250 Laerdal SonoSim Upgrade for SimMom

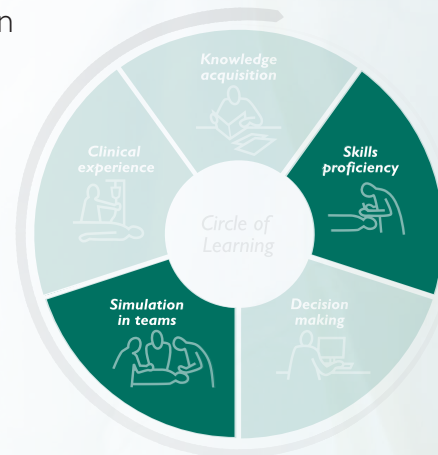




Advanced training in neonatal resuscitation

SimNewB is a newborn tetherless simulator co-created with the American Academy of Pediatrics, designed to help improve neonatal resuscitation and to meet the specific learning objectives of neonatal resuscitation protocols.

Focusing on the first 10 minutes of life, SimNewB provides realistic training for critical interventions such as lung recruitment maneuvers and advanced airway management.



- 296-00050 SimNewB (Light)
- 296-00250 SimNewB (Dark)
- 204-301XX SimPad PLUS Only (handheld remote)
- 204-50150 LLEAP for SimPad PLUS Software license
- 400-102XX Laptop Instructor - Patient Monitor
- 400-092XX Tablet - PC Instructor - Patient Monitor
- 400-095XX Rugged Tablet Instructor - Patient Monitor
- 400-293XX All in One Panel PC Instructor - Patient Monitor
- 400-01050 LLEAP Software License



Available in Light, Medium, and Dark Skin Tones *

* Part numbers listed represent light skin tones only unless otherwise specified. See your local representative for details and part numbers for other skin tone versions.



NEW MamaBirthie

Educating learners and improving competencies demands a wide range of high quality training tools. Identifying and managing potential adverse events can help ensure safe patient care.

MamaBirthie is ideal for training in birthing assessment and can be used for basic skill acquisition and competency development for all stages of labor. It can be used as a tabletop model for demonstration or worn to facilitate simulation.

360-00033 MamaBirthie (dark)

360-00133 MamaBirthie (light)



MamaNatalie

MamaNatalie birthing simulator that comes with NeoNatalie newborn simulator helps you create realistic training scenarios easily. It has been designed to facilitate an engaging role play that will make the learning sessions memorable and efficient.

340-00233 MamaNatalie Complete (Brown)

340-00333 MamaNatalie Complete (Light)



Buy One Gift One Program:

For each MamaNatalie and MamaBirthie simulator purchased through Laerdal for use in high-income countries, a second one is being gifted to support the Helping Mothers Survive initiative in low-income countries.

Since 2010, 4,000 birthing simulators have been gifted in addition to 5,000 newborn simulators donated by Laerdal for the Helping Babies Breathe program.



NEW PROMPT Flex

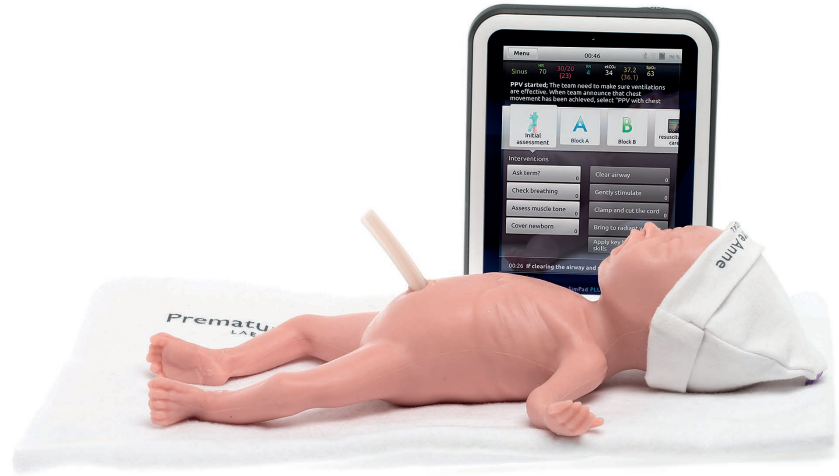
Patient safety initiatives aimed at addressing the potential for adverse events and medical errors are being implemented in many labor and delivery departments.

PROMPT Flex is ideal for addressing high-risk, low-frequency events and reducing complications. The versatile and modular design provide the user with a comprehensive experience in all stages of birth and complexity. Suited for all learners in both professional education and healthcare providers.

379-10000 Prompt Flex Standard Birthing Simulator
380-10600 PROMPT Flex
- Advanced Wireless Force Monitoring

379-10200 Cervical Dilation Eff. Module
Prompt Flex

Consumables
379-14700 Membrane Sheets 25x Prompt Flex



Premature Anne

Premature Anne is a realistically proportioned 25-week preterm manikin developed in collaboration with the American Academy of Pediatrics (AAP). Premature Anne is designed to facilitate the training of healthcare professionals in the initiation of proper care and resuscitation of preterm infants.

290-00050 Premature Anne, Task Trainer
295-00050 Premature Anne, Standard
290-00150 Premature Anne Task Trainer Twin Pack
295-55101 AAP Premature Anne Pack
8 Scenarios, PA SimPad Plus

Accessories
208-300xx SimPad PLUS for Premature Anne
400-102xx Laptop - Patient Monitor
400-092xx Tablet - Patient Monitor

Developed in partnership with the American Academy of Pediatrics, Premature Anne Task Trainer will allow for new opportunities to integrate the latest technologies into preterm infant training programs.

Pairing Premature Anne Task Trainer and educational content developed and validated by the American Academy of Pediatrics allows learners to master the skills needed to care for preterm infants and ultimately improve patient outcomes.

American Academy
of Pediatrics



DEDICATED TO THE HEALTH OF ALL CHILDREN™



NeoNatalie

NeoNatalie is an inflatable simulator designed to teach basic neonatal resuscitation skills. Developed to meet the key requirements for teaching the initial steps of resuscitation in the first ten minutes of a newborn's life, NeoNatalie is an effective, cost-efficient tool to enhance your training program.

- 103-90001 NeoNatalie light, 5-Pack
- 104-10001 NeoNatalie Basic (dark)
- 104-10003 NeoNatalie Complete Dark (US)
- 104-10004 NeoNatalie Complete Light (US)



Mama-U

Mama-U represents a postpartum uterus after birth. It supports training in treatment of postpartum hemorrhage and uterine balloon tamponade insertions and other postpartum uterus interventions. The model is ultra-portable and can be used as a tabletop model for task training, or inside MamaNatalie for a complete birth simulation.

450-00033 LM Mama-U Postpartum Uterus Trainer



MamaBreast

MamaBreast is a wearable simulator that allows highly realistic simulation of breastfeeding and breastmilk expression.

460-00033 MamaBreast Breastfeeding Simulator



A healthcare provider with dark hair, wearing a white lab coat and blue nitrile gloves, is focused on a medical training mannequin. She is leaning over the mannequin, which is lying on a white surface. The background is a soft, out-of-focus clinical setting with a yellow container visible.

Skills Proficiency

Key to the Circle of Learning, skills proficiency enables health-care providers to build confidence and competence and ensure the highest quality patient care. Using skills trainers with LLEAP on SimPad PLUS helps educators build or adapt standardized training scenarios into the learning curriculum.



Pediatric Intubation Trainer

Anatomically accurate reproduction of a pediatric torso designed for teaching the differences in pediatric and adult anatomy for airway management procedures.

255-00001 Pediatric Intubation Trainer

Consumables

250-21050 Airway Lubricant (45 ml)

Laerdal Neonatal Intubation Trainer

Laerdal Neonatal Intubation Trainer allows teaching of intubation skills on the newborn baby. Robust and realistic, this model allows students to undertake training that is directly transferable to the clinical setting.

250-00101 Laerdal Neonatal Intubation Trainer

Consumables

250-21050 Airway Lubricant (45 ml)



NG Tube and Trach Care Trainer

Torso task trainer designed for instruction in the care of patients with respiratory conditions and the practice of gastrointestinal care procedures via nasal and oral access.



375-10001 NG Tube and Trach Care Trainer

Consumables

250-21050 Airway Lubricant (45 ml)

Laerdal Infant Airway Management Trainer

Realistic practice is the key to developing proficiency in airway management skills. The Laerdal Infant Airway Management Trainer provides the realistic anatomy of a three-month-old infant for teaching and practicing basic and advanced airway management skills.

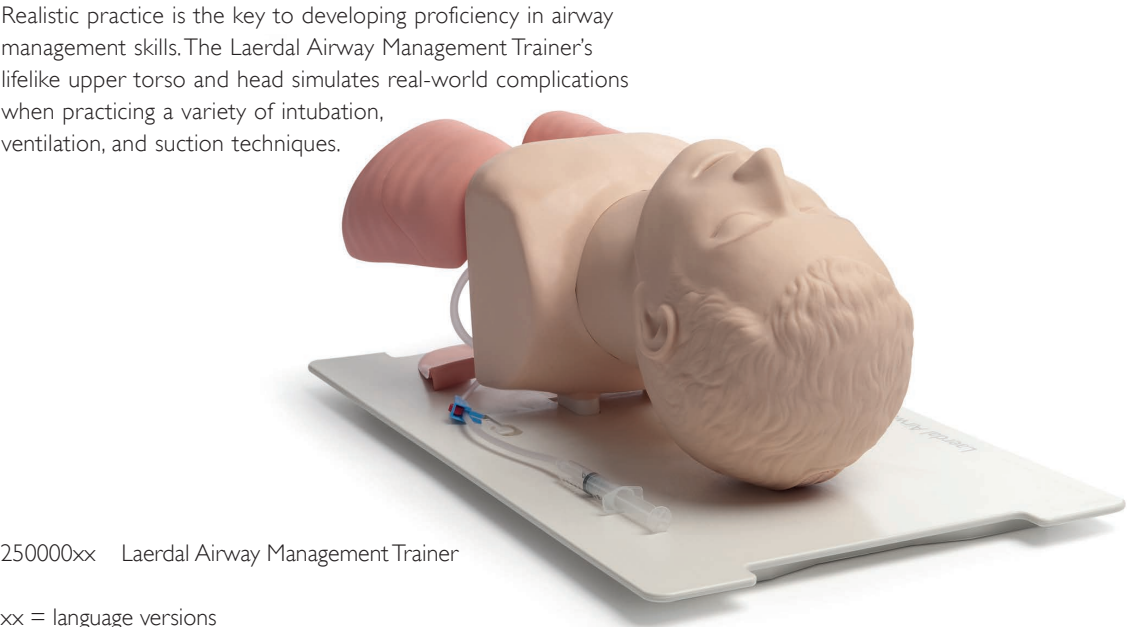
250-00250 Laerdal Infant Airway Management Trainer

Consumables

250-21050 Airway Lubricant (45 ml)



Laerdal Airway Management Trainer



250000xx Laerdal Airway Management Trainer

xx = language versions

- Consumables
- 252090 Airway Lubricant (180 ml)
 - 252800 Concentrated Simulated Vomit

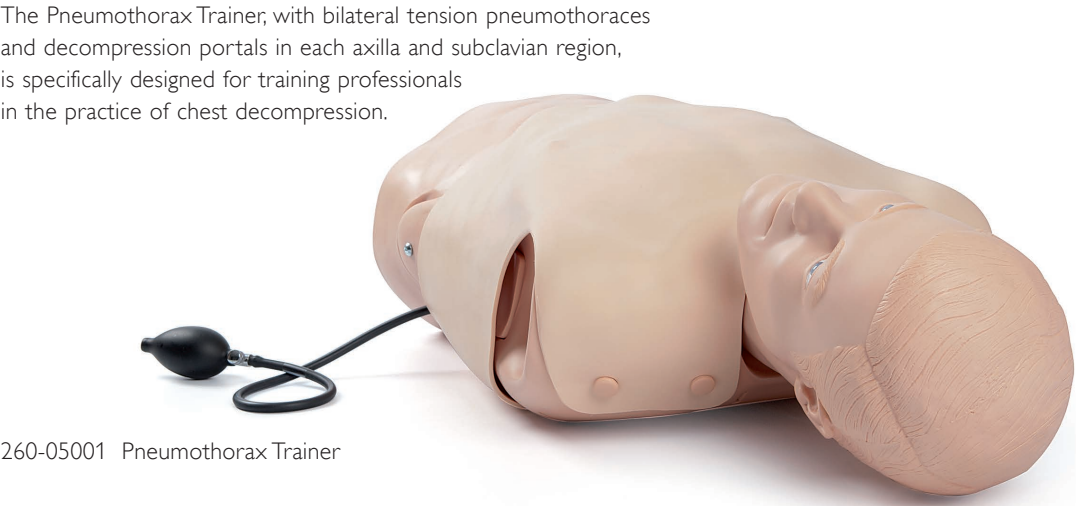
Deluxe Difficult Airway Trainer



261-10001 Deluxe Difficult Airway Trainer

- Consumables
- 250-21050 Airway Lubricant (45 ml)
 - 261-00250 Neck Skins (pkg. 6)
 - 200-00250 Cricothyroid Membrane Tape (1 roll)

Pneumothorax Trainer



260-05001 Pneumothorax Trainer

- Consumables
- 200-00150 Bladder Replacement Kit
 - 200-01850 MidAxillary Bladder
 - 200-02450 Pneumo Pad - Left
 - 200-02550 Pneumo Pad - Right

AT Kelly Torso



260-00001 AT Kelly Torso

- Consumables
- 260-00950 Bladder Replacement Kit
 - 260-01050 Replacement Central Line Tubing
 - 260-00350 Pneumo Pad - Right
 - 260-00450 Pneumo Pad - Left

Cricoid Stick Trainer

Needle and surgical cricothyrotomy skills can be practiced on this model with interchangeable rigid and soft tracheas.

261-01001 Cricoid Stick Trainer

- Consumables
- 261-01150 Replaceable Trachea – Rigid
 - 261-01250 Replaceable Trachea – Soft
 - 261-01350 Replacement Neck Skin



Choking Charlie

Choking Charlie is an adult torso designed specifically for training students in the performance of the Heimlich Abdominal Thrust Maneuver.

102-00001 Choking Charlie

- Consumables
- 102-00150 Simulated Boluses (4-Pack)



Blood Pressure Training Arm

Lifelike, adult arm with an electronic trainer designed for training the procedure of NIBP measurement.

375-40501 Blood Pressure Training Arm

381402 pad; deltoid-am-std



SimPad Blood Pressure Trainer

The SimPad Blood Pressure Training Arm allows for practice of non-invasive blood pressure (NIBP) measurement. Auscultated and palpated blood pressure simulation is possible.

375-42050 SimPad Blood Pressure Trainer



12-Lead Task Trainer

12-lead training in a portable torso manikin

260-20001 12-Lead Task Trainer

Consumables
250-21050 Airway Lubricant (45ml)



SimPad Arrhythmia Trainer

The SimPad Arrhythmia Trainer features an extensive ECG rhythm collection based on the SimMan 3G ECG library. Variations for 3-4 lead rhythm recognition using a clinical monitor.

200-20250 SimPad Arrhythmia Trainer



HeartSim 200

The HeartSim® 200 is a battery-powered ECG rhythm simulator designed to provide basic, modified, and pediatric rhythms with variable pulse rate and strength. This product offers all the necessary rhythms to conduct ACLS course in one compact, convenient unit.

260010 HeartSim 200 Cardiac Rhythm Simulator
292021 Heartsim 200 Link Cable



Symbio Rhythm Simulator

Easy to operate, the Symbio Rhythm Simulator is designed to meet both your training and equipment testing needs.

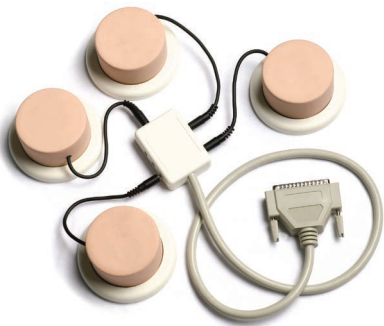
9851-008 Symbio Rhythm Simulator



SimPad Sounds Trainer

The SimPad Sounds Trainer allows for teaching multiples of students in auscultation and recognition of normal and abnormal heart, lung and bowel sounds.

200-20150 SimPad Sounds Trainer



Baby Umbi

Baby Umbi is a reproduction of a female newborn infant designed for the practice of umbilical catheterization.

250-00501 Baby Umbi

- Consumables
- 240-00150 Umbilical Cord Set (pkg/3)
 - 240-00250 Simulated Umbilical Blood



Baby Stap

Reproduction of a neonatal infant positioned for the practice of lumbar puncture techniques.

375-34001 Baby Stap

- Consumable
- 375-34150 Replacement Tubing



Baby Hippy

Reproduction of the lower torso and limbs of a female newborn designed to train professionals in diagnosing both congenital hip dislocation and hip dislocatability.

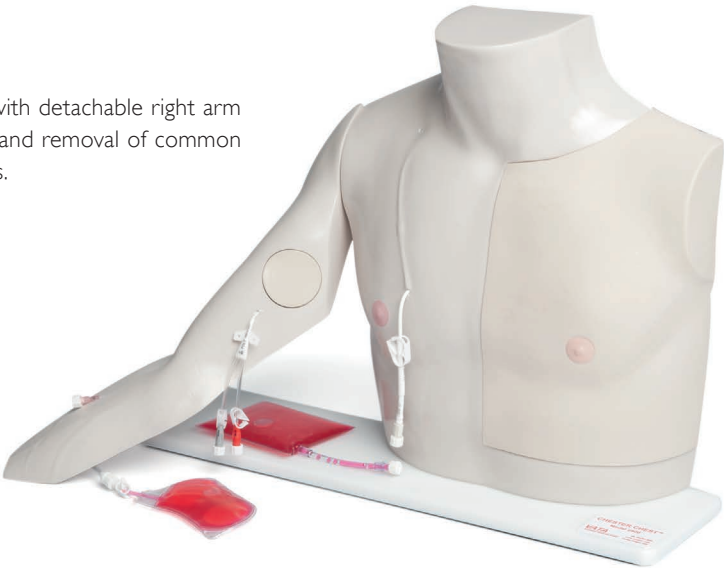
375-35001 Baby Hippy



Chester Chest

Lifelike model of human torso with detachable right arm designed for the insertion care, and removal of common long-term vascular access routes.

VT-2400 Chester Chest



Multi-Venous IV Training Arms

Lifelike adult arm reproductions with replaceable skin and veins designed for peripheral intravenous therapy.

- 270-00001 Male IV Arm Kit (S)
- 270-00001B Male IV Arm Kit (B)
- 270-00001T Male IV Arm Kit (T)
- 375-50001 Female IV Arm Kit (S)
- 375-50001B Female IV Arm Kit (B)
- 375-50001T Female IV Arm Kit (T)



- Consumables:
- 250-21050 Airway Lubricant (45 ml)
 - 300-00750 Simulated Blood – Red
 - 312029 Replacement Skin/Veins - Male
 - 325-00350 Replacement Skin/Veins - Male



Pediatric Multi-Venous IV Training Arm Kit

Lifelike arm reproductions with multi-vein system designed for peripheral intravenous therapy.

- 375-70001 Pediatric IV Arm Kit (S)
- 375-70001B Pediatric IV Arm Kit (B)
- 375-70001T Pediatric IV Arm Kit (T)



Arterial Stick Arm Kit

Lifelike adult male arm reproduction with infusible arteries designed for training the proper arterial puncture procedure for blood gas analysis.

- 375-80001 Arterial Stick Arm Kit (S)
- 375-80001B Arterial Stick Arm Kit (B)
- 375-80001T Arterial Stick Arm Kit (T)

- Consumables:
- 250-21050 Airway Lubricant (45 ml)
 - 300-00750 Simulated Blood – Red
 - 375-80150 Replacement Skin/Arteries



Laerdal Intraosseous Trainer

The Laerdal Intraosseous Trainer is designed for training in infant intraosseous infusion techniques.

- 080015 Intraosseous Trainer

- Consumables:
- 082305 Leg Replacement Pad 5/pkg.



Laerdal IV Torso

The Laerdal IV Torso allows practice of intravenous access techniques for both advanced cardiac life support and trauma, delivered by organizations around the world.

- 090019 Laerdal IV Torso

- Consumables:
- 092001 Neck Replacement Pad
 - 092003 Femoral Replacement Pad
 - 092103 Simulated Blood



Medical Devices

Medical devices are essential to safe and effective treatment during an emergency. Our products are preferred by health-care providers for excellent performance, lasting value, and reliability.



Laerdal Pocket Mask

The Laerdal Pocket Mask's design, filter and one-way valve makes it a quality choice that provides protection during CPR.

- 820006xx Pocket Mask PB (xx)
- 82000733 Pocket Mask with strap, HC (IE)
- 820011xx Pocket Mask HC (xx)
- 82001933 Pocket Mask w/o wipe & gloves, HC (IE)
- 820032 Pocket Mask HC, PL, no logo large
- 829911 Pocket Mask HC, PL
- 829940 Pocket Mask SP, PL
- 820040xx Pocket Mask SP (Blue)
- 820041xx Pocket Mask SP (Black)
- 820042xx Pocket Mask (Camouflage)

xx = language code

- Consumables:
- 820410 Valve Pocket Mask 1/Pack
 - 820411 Valve Pocket Mask 100/Pack
 - 820700 Update kit, Pocket Mask
 - 830110 Headstrap adjustable x10
 - 820610 Filter Pocket Mask 1/Pack
 - 820611 Filter Pocket Mask 10/Pack

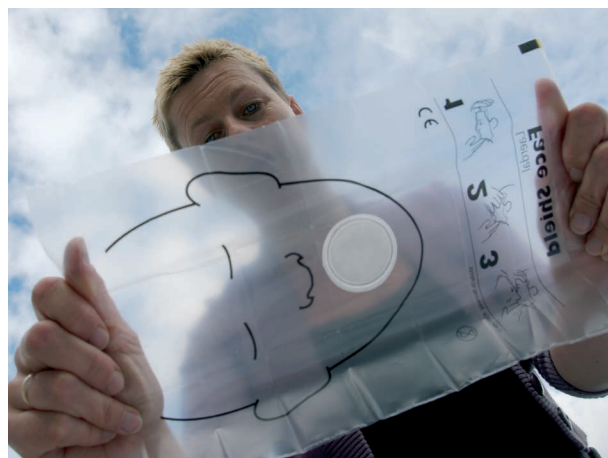


Laerdal Paediatric Pocket Mask

The Laerdal Pediatric Pocket Mask makes CPR on pediatric patients safer. With the low resistance one way valve, and circular silicone mask for pediatric features, providers can provide better, safer CPR to pediatric patients. The Pediatric Pocket Mask is an excellent companion for providers that often come in contact with infants and children.

- 820050 Laerdal Paediatric Pocket Mask CPR Barrier Device
- 820051 Laerdal Paediatric Pocket Mask w/o wipe CPR Barrier Device
- 820052 Laerdal Paediatric Pocket Mask, w/Gloves in Red/Black SP
- 820053 Laerdal Paediatric Pocket Mask w/o wipe and gloves CPR Barrier Dev.
- 820054 Laerdal Paediatric Pocket Mask w/Gloves & wipe, Polybag

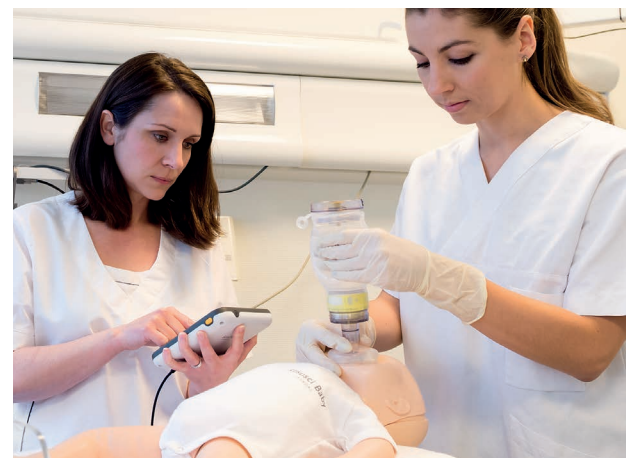
- 820410 Valve Pocket Mask 1/Pack
- 820411 Valve Pocket Mask 100/Pack



Laerdal Face Shield

Laerdal Face Shield features a high-quality 3M hydrophobic filter with CPR instructions printed on it, and gives providers the confidence to begin CPR. The small packaging fits into wallets, pockets and hand bags for readiness whenever an emergency should occur. The Laerdal Face Shield comes packaged in either key chain form or disposable sleeves and is sold in packs of 50.

| | |
|----------|--------------------------------|
| 460000xx | Laerdal Face Shield x 50 |
| 460008 | Keyring w/LFS x 25 Yellow. |
| 460009 | Keyring w/LFS x 25 Multicolour |
| 460014 | LFS, refill for keyring x 50 |
| 460016 | Keyring w/LFS x 25 Blue |
| 460017 | Keyring w/LFS x 25 Camouflage |
| 460018 | Keyring w/LFSx25, QCPR |



NEW Laerdal Upright Resuscitator

The Laerdal Upright Resuscitator for Newborns has an innovative design that has been shown to help deliver more adequate ventilations per event than a standard resuscitator design.

85605xx Laerdal Upright Resuscitator





Laerdal Silicone Resuscitator (LSR)

The Laerdal Silicone Resuscitator (LSR) enables medical personnel to facilitate assisted ventilation of patients in pre-hospital, in-hospital and post-hospital care. The LSR comes in adult, pediatric and preterm sizes.

Adult

- 870050xx LSR Adult Basic w/o Mask in Carton
- 870051xx LSR Adult Complete w/ Masks, in Carton
- 870052xx LSR Adult Standard w/ Mask, in Carton
- 870053xx LSR Adult Cpl. w/Masks, in Compact Case
- 870055xx LSR Adult Complete w/ Masks, in Display Case

Paediatric

- 860050xx LSR Paediatric Basic w/o Mask, in Carton
- 860051xx LSR Paediatric Complete w/ Masks, in Carton

- 860052xx LSR Paedi. Std. Child w/ Mask, in Carton
- 860053xx LSR Paediatric Complete w/ Masks, in Complete Case
- 860055xx LSR Paediatric Complete w/ Masks, in Disp.Case
- 860056xx LSR Paediatric Std.Term w/ Mask, in Carton

Preterm

- 850050xx LSR Preterm Basic w/o Mask, in Carton
- 850051xx LSR Preterm Complete w/ Masks, in Carton
- 850053xx LSR Preterm Complete w/Masks in Compact Case
- 850055xx LSR Preterm Complete w/Masks in Display Case



Laerdal Silicone Masks

Depending on the shape and size of your patient, there is a Laerdal Silicone mask that fits. An airtight seal between the skin and the silicone enables the proper administration of air. The Silicone masks are completely transparent for visibility of the patients' nose and mouth, fit standard 15/22mm connectors and are compatible with the Multi-Function Mask Cover.

- 860220 Child Silicone Mask 3-4 w/Multi-function Mask Cover
- 860221 Child Silicone Mask 3-4 w/o Mask Cover
- 865200 Multi Function Mask Cover for Mask 3-4
- 870220 Adult Silicone Mask 4-5+ w/Multi-function Mask Cover
- 870221 Adult Silicone Mask 4-5+ w/o Mask Cover
- 872220 Adult & Child Sil. Mask w/Multi-function Mask Covers
- 875200 Multi-Function Mask Cover for Mask 4-5+





The BAG II Disposable Resuscitator

The BAG II Disposable Resuscitator is Laerdal's option for disposable ventilation. For lung ventilation on patients, without clean up and the risk of cross-contamination, The BAG II Disposable Resuscitator is the top choice. The BAG II has 3 different options for ventilation bag volume: adult, child or infant.

Single units

- 845111 The BAG II Resuscitator Adult w/mask 5
- 845141 The BAG II Resuscitator Adult w/mask 4
- 845151 The BAG II Resuscitator Adult mask 5 w/inflation port
- 845152 The BAG II Resuscitator Child mask 3 w/inflation port
- 845121 The BAG II Resuscitator Child w/mask 3
- 845131 The BAG II Resuscitator Infant w/mask 1

Multipacks (12-Pack)

- 845211 The BAG II Resuscitator Adult w/mask 5
- 845241 The BAG II Resuscitator Adult w/mask 4
- 845251 The BAG II Resuscitator Adult w/mask 5 w/inf. port - pkg of 12
- 845252 The BAG II Resuscitator Child mask 3 w/inf. port - pkg of 12
- 845221 The BAG II Resuscitator Child w/mask 3
- 845223 The BAG II Resuscitator Child w/mask 2
- 845231 The BAG II Resuscitator Infant w/mask 1

Accessories

- 845240 Laerdal Disposable PEEP Valve Assembly (qty. 10)
- 845255 Laerdal Disposable Mask 1 w/inflation port (qty.20)
- 845256 Laerdal Disposable Mask 2 w/inflation port (qty.20)
- 845250 Laerdal Disposable Mask 3 w/inflation port (qty.20)
- 845260 Laerdal Disposable Mask 4 w/inflation port (qty.20)
- 845270 Laerdal Disposable Mask 5 w/inflation port (qty.20)



Thomas Select Tube Holder

Thomas Tube Holder

Thomas Tube Holders

Our Thomas Tube Holders secure advanced airway devices, such as Endotracheal Tubes and Supraglottic Airway devices, after insertion into the trachea or esophagus to reduce the risk of accidental extubation.

- 600-40000 Thomas Select Tube Holder Adult (qty. 1)
- 600-42500 Thomas Select Tube Holder Adult, 25-Pack



- 600-10000 Thomas Tube Holder Adult (International) qty.1
- 600-20000 Thomas Tube Holder Pedi (International) qty.1
- 600-30000 Thomas Tube Holder Adult green (Int'l) qty.1



Laerdal Compact Suction Unit (LCSU) 4

The Laerdal Compact Suction Unit (LCSU) 4 suction unit combines rugged design with lightweight portability, an essential tool for every first responder.

- 88005103 LCSU 4, 800 ml Complete unit (UK)
- 88005140 LCSU 4, 800 ml Complete unit (EUR)
- 88005203 LCSU 4, 800 ml,
RTCA Complete unit (UK)
- 88005240 LCSU 4, 800 ml,
RTCA Complete unit (EUR)
- 88006103 LCSU 4, 300 ml Complete unit (UK)
- 88006140 LCSU 4, 300 ml Complete unit (EUR)
- 88006203 LCSU 4, 300 ml,
RTCA Complete unit (UK)
- 88006240 LCSU 4, 300 ml,
RTCA Complete unit (EUR)

Consumables:

- 886100 300 ml Disposable Canister w/tubing (Qty.1)
- 886102 800 ml Disposable Canister w/tubing (Qty.1)
- 886104 800 ml Disposable Canister w/o tubing (Qty.6)
- 886105 Patient Tube 1.8 m(6') Disposable (Qty.1)
- 886106 Vacuum Tube (Qty.1)



Laerdal Suction Unit (LSU)

The Laerdal Suction Unit (LSU) is a portable, powerful and highly reliable suction unit designed for optimal preparation in emergency situations.

The LSU is available as a reusable or semi-disposable option, depending on your requirements.

- 780000xx LSU w/Reusable Canister
- 78002001 LSU w/Bemis Canister
- 780030xx LSU w/Serres Suction Bag Canister System

xx = country code

Consumables:

- 57151 Serres Suction Bag 1000 ml, Blue
- 57151-2 Serres Suction Bag (36-Pack) 1000 ml, Blue
- 57300 Serres Canister 1000 ml, Transparent
- 5833181 Serres Suction Tube 1.8 m, CH 25, LSU
- 780422 Coaxial Vacuum Connector 33 cm, 10-pack
- 781200 Aerosolfilter for LSU Reusable canister
- 781204 Serres Vacuum Tubing LSU
- 781205 Serres Vacuum Tubing Clear Inlet
- 781206 Serres Vacuum Connector





V-VAC Manual Suction Unit

The V-VAC Manual Suction Unit is lightweight, weighing less than 0.3 kgs, and easily portable. It is small enough to fit in EMS bags, or first aid kits, and is ready to go when you are. As soon as you squeeze it, the Manual Suction Unit provides a powerful suction range between 170-280 mmHg and 70 Liters per minute (LPM).

985000 V-VAC starter kit
985100 V-VAC trainer's kit



Penguin Suction Device

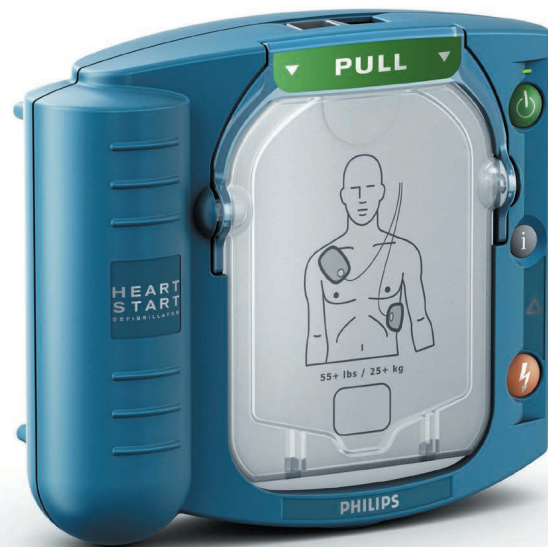
Babies' nasal passages can become blocked for many reasons including exposure to viruses or irritation from allergens. Clogged nasal passages can interfere with babies' ability to feed, and in very young newborns, their ability to breathe. Designed to clear babies' airways, the Penguin is made of one piece of silicone making it easy to clean and durable, able to withstand hundreds of uses. The Penguin was developed to support basic newborn resuscitation courses like Helping Babies Breathe.

98600060 Penguin Newborn Suction Reusable



Medical Devices
Defibrillation





HeartStart HS1 First Aid Defibrillator

For the ordinary person in the extraordinary moment the HeartStart HS1 Defibrillator is designed to be light-weight and easy to use.

| | |
|---------------|---------------------------------------|
| M5066AABD | HeartStart HS1 (DE) Philips |
| M5066AABD-C01 | HeartStart HS1 (DE) Philips Std. Case |
| M5066AABF | HeartStart HS1 (FR) Philips |
| M5066AABF-C01 | HeartStart HS1 (FR) Philips Std. Case |
| M5066AABF-C02 | HeartStart HS1 (FR) Philips Slim Case |
| M5066AABU | HeartStart HS1 (GB) Philips |
| M5066AABU-C01 | HeartStart HS1 (GB) Philips Std. Case |
| M5066AABU-C02 | HeartStart HS1 (GB) Philips Slim Case |

| | |
|--------------|-----------------------------------------|
| Consumables: | |
| M5070A | Battery for Heartstart HS1 |
| M5071A | Adult SMART pads, Heartstart HS1 |
| M5072A | Infant/Child SMART pads, Heartstart HS1 |
| M5073A | Adult training pads Heartstart HS1 |
| M5093A | Replacement Adult Training pads |
| M5094A | Replacement Infant/Child Training Pads |

HeartStart FRx

With a rugged and reliable construction the HeartStart FRx AED makes it perfect for the first responder.

The HeartStart FRx was built to surpass rigorous testing requirements: withstanding jetting water, crushing loads of up to 500 pounds, and a one-meter drop onto concrete.

| | |
|-----------|-----------------------------|
| 861304ABD | Heartstart FRx (DE) Philips |
| 861304ABF | HeartStart FRx (FR) Philips |
| 861304ABH | HeartStart FRx (DU) Philips |
| 861304ABU | HeartStart FRx (UK) Philips |
| 861304ABY | HeartStart FRx (DK) Philips |

| | |
|--------------|----------------------------------------|
| Consumables: | |
| 941314 | Bracket without lock |
| 989803139261 | SMART Pads II (1 pair) |
| 989803139271 | Training Pads II (1 pair) |
| 989803139291 | Replacement Training Pads II, (1 pair) |
| M5070A | Battery for Heartstart HS1 |



HeartStart FR3

The new HeartStart FR3 is Philips best professional-grade AED yet and is now making lifesaving faster, easier, and better for professional responders.

| | |
|--------|-----------------------------------|
| 861388 | HeartStart FR3 Text, Basic Bundle |
| 861389 | HeartStart FR3 ECG, Basic Bundle |

| | |
|--------------|--------------------------------------------|
| Consumables: | |
| 801-10850 | Patient Adhesives containing (10 x 3-Pack) |
| 989803149981 | SMART Pads III, 1 set |
| 989803149991 | SMART Pads III, 5 set |
| 989803150161 | Primary battery, FR3 LiMn |
| 989803150181 | Replacement Pads HS Training Pads III |
| 989803150201 | Interconnect Cable HS Training Pads III |
| 989803150241 | FR3 Rechargeable Battery For Clinical Use |



HeartStart MRx Consumables:

| | | | |
|--------------|-----------------------------------|--------|-------------------------------------|
| Consumables: | | M3501A | HP adult defib pads iec & |
| 40457C | Printer Paper (10 rolls/pack) | | Aami compatible |
| 801-10850 | Patient Adhesives (10 × 3-Pack) | M3504A | HP pedi pads-5 pair |
| 989803138171 | MRx 75mm printer paper 10 rolls | M3538A | MRx Battery rechargeable |
| 989803138181 | MRx 75mm printer paper 80 rolls | | Li-Ion 14,8V |
| 989803158211 | Adult Electrode Pads 1 pair | M3712A | Adult Heartstart Pads 1 Pair |
| 989803158221 | Adult Electrode Pads 5 pairs | M3713A | Adult Heartstart Pads 10 sets |
| M1191B | Reusable Adult SpO2 finger sensor | M3716A | Adult Radiolucent Heartstream |
| M2202A | Adult Radiotranslucent Foam | | Pads |
| | Electrode | M3717A | Pediatric Pads HS-4000, 5 sets/case |
| M2524A | ETCo2 Pediatric Smart Capnoline | | |
| | Single purpose | | |
| M2526A | ETCo2 Adult Smart Capnoline | | |
| | Single purpose | | |



Medical Devices
Immobilization



Stifneck Select Collars - Adult and Pediatric

The Laerdal Stifneck select extrication collar is four different collars in one. Stabilize spinal patients correctly and easily with 4 different sizing options that all lock quickly and safely into place.

- 980010 Stifneck Select Extrication Collar
- 980012 Stifneck Select Green Extrication Collar
- 980020 Stifneck Pedi-Select Extrication Collar
- 981000 Spinal system solution set w/sewn loop ends
- 981100 Spinal system solution set w/speed clip ends
- 981300 Spinal system solution set w/ Best Straps



Stifneck Extrication Collars

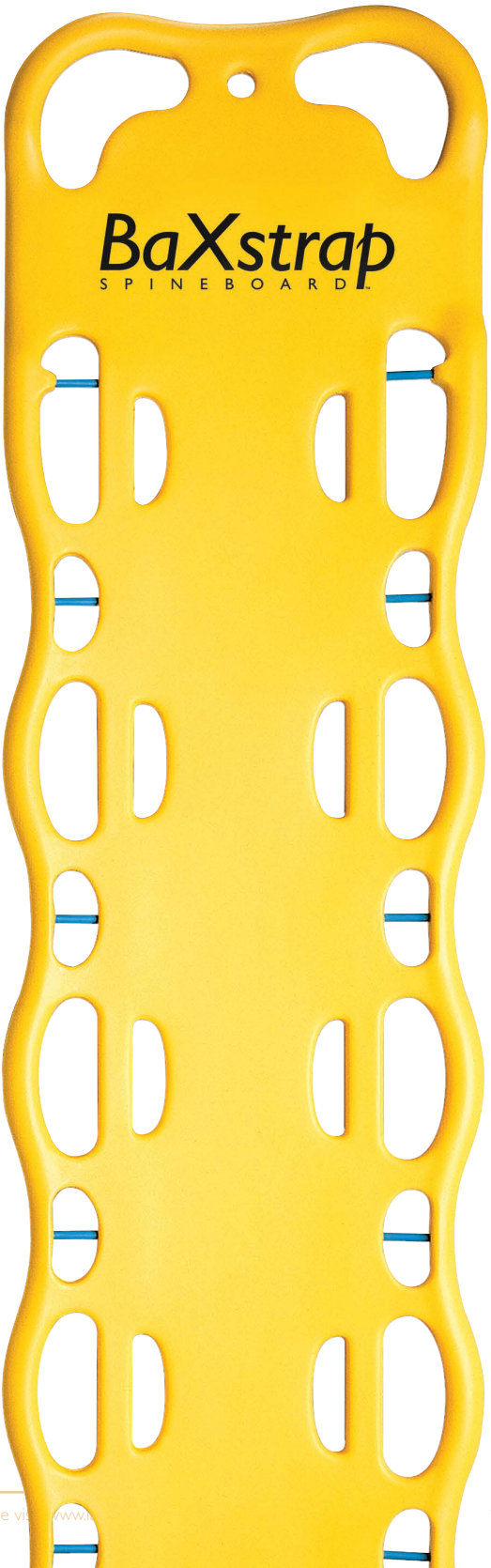
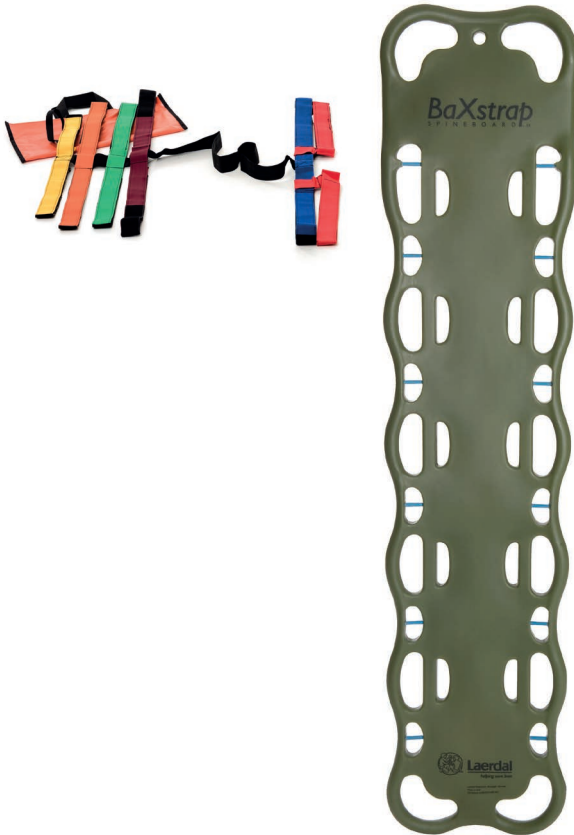
The original Stifneck with outstanding motion restriction and optimal sizing. Others may look like the Stifneck collar, but there's only one original.

- | | |
|--------------------------------------------------|--------------------------------------------|
| 980000 Stifneck Set | 980500 Stifneck Regular Extrication Collar |
| 980100 Stifneck Baby, No-Neck Extrication Collar | 980600 Stifneck Tall Extrication Collar |
| 980200 Stifneck Paediatric Extrication Collar | |
| 980300 Stifneck No-Neck Extrication Collar | |
| 980400 Stifneck Short Extrication Collar | |

BaXstrap Spineboard

The Laerdal Baxstrap Spineboard provides the highest quality and most comfortable care for patients requiring immediate emergency spinal care. As one of the lightest, most rigid boards on the market, the Baxstrap Spineboard prepares providers for any situation. The durable and uniquely contoured design, matched with our private labeling option, makes the Baxstrap Spineboard the premium spine board on the market.

- 981000 Spinal system solution set w/sewn loop ends
- 981100 Spinal system solution set w/speed clip ends
- 981300 Spinal system solution set w/ Best Straps
- 981000 Spinal system solution set w/sewn loop ends
- 981100 Spinal system solution set w/speed clip ends
- 981300 Spinal system solution set w/ Best Straps
- 982500 BaXstrap Spineboard, Yellow
- 982600 BaXstrap Spineboard, Green



HeadBed II

Head Immobilization Device

The HeadBed II Head Immobilization device is a disposable, water resistant Head Immobilizer that allows for quick and easy patient assessments due to its open ear design. The HeadBed II provides immobilization with most spineboards and fits adults, children and infants.

982000 Headbed II



Sta-Blok Head Immobilizer

Easy to Use, Adjustable, Comfortable, and Stable

982100 PadPack Alignment pads (10-Pack)



PadPack Alignment Pads

Padpack alignment pads enable neutral alignment during immobilization by padding between patient and spineboard. Padpacks provide safety and security and can help avoid the need for on the fly solutions to stabilize patients for immobilization.

982100 PadPack Alignment pads
(10-Pack)



SpeedBlocks

Head Immobilizer

Immobilize a patients head in 4 easy steps. Place the head on the base, adjust the blocks, lock them into place and fasten the head and chin; your patient is immobilized in a matter of minutes. The reliable handle-locking mechanism with a quick release lock enables providers to lock patients securely into place, regardless of the head shape or position.

983090 SpeedBlocks Starter Pack (Qty:1)

- Consumables:
- 983060 SpeedBlocks Universal Base (each)
 - 983092 SpeedBlocks Block Set (each)
 - 983096 SpeedBlocks Strap + Pad Replacement Set



Laerdal Pedi-Pad Spineboard Pad

It's the foam, anti-skid pad that provides proper alignment on any spineboard. Pedi-Pad works for children.

701-00001 Laerdal Pedi-Pad
Backboard Pad (6-Pack)



A Global Commitment

Norway:

LAERDAL MEDICAL AS
P.O. Box 377
N-4002 Stavanger
Tel. +47 51 51 17 00,
Fax +47 51 52 35 57

laerdal.norge@laerdal.no
www.laerdal.com/no

Australia:

LAERDAL Pty. Ltd.
(ABN 47 003 817 490)
PO Box 52 - 8 Stamford Road,
Oakleigh, Victoria 3166
Tel. +61 3 9569 4055,
Toll free 1800 331 565
Fax +61 3 9569 4028,
Toll free 1800 635 835

customerservice@laerdal.com.au
www.laerdal.com/au

Belgium and Luxembourg:

LAERDAL BENELUX NV
Mechelsesteenweg 277
B-1800 VILVOORDE

Tel: +32 2 253 36 96,
Fax: +32 2 253 36 90

info@laerdal.be
www.laerdal.com/be

The Netherlands:

LAERDAL BENELUX HOUSE
Dijkstraat 54
5554-PS VALKENSWAARD

Tel: +32 0342 405800
Fax: +32 0342 405802

info@laerdal.nl
www.laerdal.com/nl

South America:

LAERDAL BRAZIL
Al. Mamoré, 503 - 14º.
Andar - sala 144 / 143
Alphaville - Barueri - SP
Brazil 06454-040

Tel: +55 11 4193-8007
comercial@laerdal.com
www.laerdal.com/la
www.laerdal.com/br

Canada:

LAERDAL MEDICAL
CANADA LTD.
305 Milner Avenue, Suite 703 Toronto
ON M1B 3V4 Canada

Tel. +1 (416) 298-9600,
Toll free 888/LAERDAL (523-7325)
ou en français (800) 567-9987
Fax +1 (416) 298-8016

savelives@laerdal.ca
www.laerdal.com/ca

Denmark:

LAERDAL DANMARK
Njalsgade 19 D
2300 København S

Tel. +45 80 333 112,
Fax +45 80 333 555

laerdal.denmark@laerdal.no
www.laerdal.com/dk

Far East:

LAERDAL SINGAPORE PTE LTD
159 Kampong Ampat,
KA Place #07-01/02
Singapore 368328.

Tel: (065) 6282 1912
Fax: (065) 6282 1203.

customerservice@laerdal.com.sg
www.laerdal.com/sg

Finland:

LAERDAL OY
Teknobulevardi 3-5
01530 Vantaa

Puhelin +358 (0)9-612 99 80,
Faksi +358 (0)9-692 77 99

laerdal.finland@laerdal.no
www.laerdal.com/fi

France:

LAERDAL MEDICAL FRANCE
1 rue des Vergers - Bâtiment n° 5
69760 Limonest Cedex
Tél. +33 (0)47 25 20 252,
Fax +33 (0)47 83 53 845

laerdal.france@laerdal.no
www.laerdal.com/fr

Germany:

LAERDAL MEDICAL GmbH
Lilienthalstr. 5
82178 Puchheim
Tel. +49 (0)89 / 864 95 40,
Fax +49 (0)89 / 864 34 84

info@laerdal.de
www.laerdal.com/de

Österreich:

Laerdal Medical GmbH
Zweigniederlassung Österreich
Autokaderstrasse 29/BT2/2
A-1210 Wien

Tel. +43 (1) 3152384
Fax. +43 (1) 3152385

info@laerdal.at
www.laerdal.at

Hong Kong:

Laerdal CHINA LTD.
Unit 3101, 31/F Tower 1, MEGABOX
Enterprise Square 5 38 Wang Chiu
Road, Kowloon Bay, Kowloon Hong
Kong

Tel. +852-31682518,
Fax +852-31682519

sales@laerdal.com.hk
www.laerdal.com/hk

Italy:

LAERDAL ITALIA S.R.L.
Laerdal Italia Srl
Via della Beverara 48/3a
40131 Bologna

Tel. +39 051-355587,
Fax +39 051-355598

laerdal.italy@laerdal.no
www.laerdal.com/it

Poland:

Laerdal Medical Poland
Sp. z o.o. ul. Hutnicza 6
40-241 Katowice,

Tel +48 32 7350461
Fax +48 32 7350314

Email Imp@lmp.pl
www.lmp.pl

Japan:

LAERDAL MEDICAL JAPAN K.K.
Ichibancho FS Bldg 5 Fl
Ichibancho 8, Chiyoda-ku,
Tokyo 102-0082

Tel: +81-3-3222-8080
Fax: +81-3-3222-8081

laerdal.japan@laerdal.co.jp
www.laerdal.com/jp

Korea:

LAERDAL MEDICAL KOREA LLC

1,2F Hyochun Building
9, Nambusunwan-ro 333-gil
Seocho-gu, Seoul 134-864
Tel: +82 267148800
Fax: +82 267148899

csi@laerdal.co.kr
www.laerdal.com/kr

Malaysia:

LAERDAL MALAYSIA SDN BHD
(556564-A)
1st Floor Kompleks Penchala
No 50 Jalan Penchala, Section 51
46050 Petaling Jaya
Selangor, Malaysia

Tel: (60-3)7782-7002
Fax: (60-3)7782-7003
customerservice@laerdal.com.my
www.laerdal.com/my

New Zealand:

LAERDAL NEW ZEALAND Ltd
PO Box 11952 Ellerslie Auckland
1542 New Zealand

Tel : +64 800 523 732
Fax : +64 800 528 852

customerservice@laerdal.co.nz
www.laerdal.com/nz

Spain:

LAERDAL ESPAÑA
C/ Teide, 3 Bajo
28703 San Sebastian de los Reyes
MADRID

Tel: (0034) 902 291110
Fax: (0034) 91 651 86 25

laerdal.spain@laerdal.no
www.laerdal.com/es

Sweden:

LAERDAL MEDICAL AB
Hammarby Fabriksväg 23 SE-120 30
Stockholm Sweden

Tel. +46 (0)8-55614610,

kontakt@laerdal.se
www.laerdal.com/se

United Kingdom:

LAERDAL MEDICAL LTD.
Laerdal House Goodmead Road
Orpington BR6 0HX UK
Tel. +44 (0)1689 876634,
Fax +44 (0)1689 873800

customerservice@laerdal.co.uk
www.laerdal.co.uk

USA:

LAERDAL MEDICAL CORP.
167 Myers Corners Road,
P.O. Box 1840, Wappingers Falls,
New York 12590-8840

Tel: 877-LAERDAL (523-7325) Fax:
(800) 227-1143

customerservice@laerdal.com
www.laerdal.com

Laerdal Texas:

LAERDAL MEDICAL CORP.
P.O. Box 38, 226 FM 116,
Gatesville, TX 76528
Tel. (800) 433-5539,
+1 (254) 865-7221,
Fax +1 (254) 865-8011

customerservice@laerdal.com
www.laerdal.com

Worldwide Offices & Distributors

For more for information about
global contacts please visit:
www.laerdal.com

At Laerdal, we work towards a future where no one should die or be disabled unnecessarily during birth or from sudden illness, trauma or medical errors. Our solutions are used for quality education and therapy in emergency and critical care.



Laerdal
helping save lives