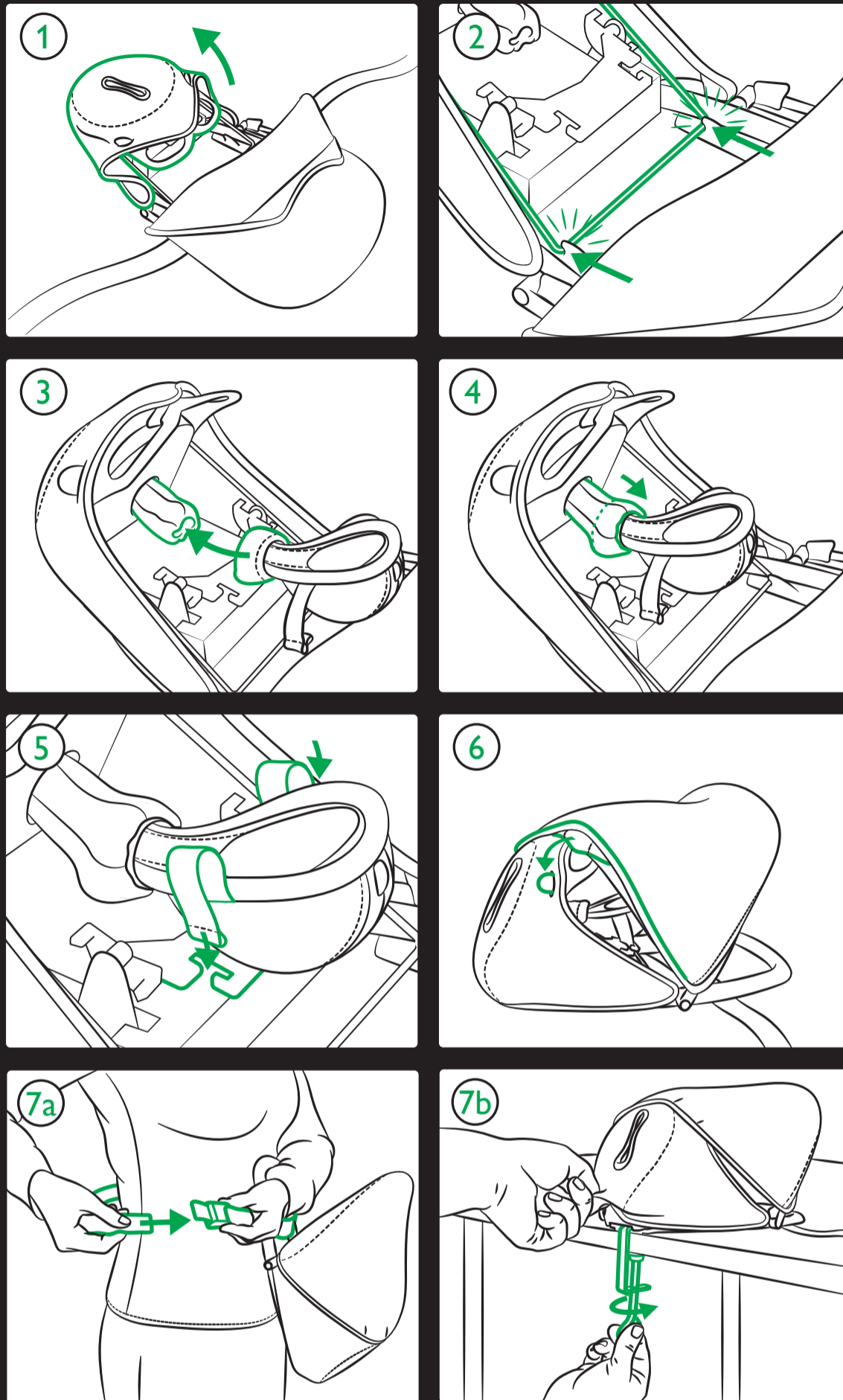


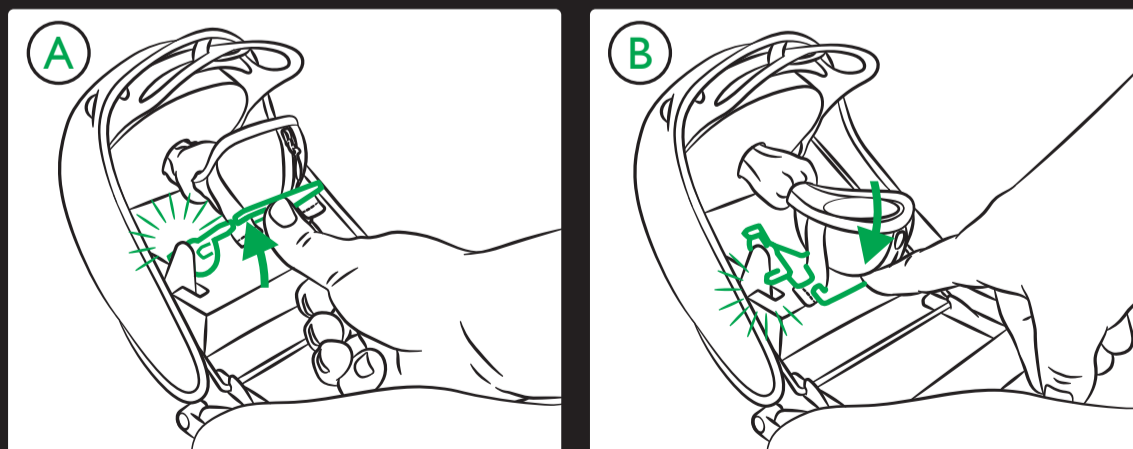
Sister-U

Multi Uterus Trainer

Setup



Settings



To Clean

Wipe with a soft damp cloth.

To Store

Before collapsing
 1. Set uterus plate to position B
 2. Remove uterus
 Store in a cool, dry place away from direct sunlight.

For more details on Sister-U and product videos visit : www.laerdalglobalhealth.com