

1. Power on SimPad



2. Power on the manikin



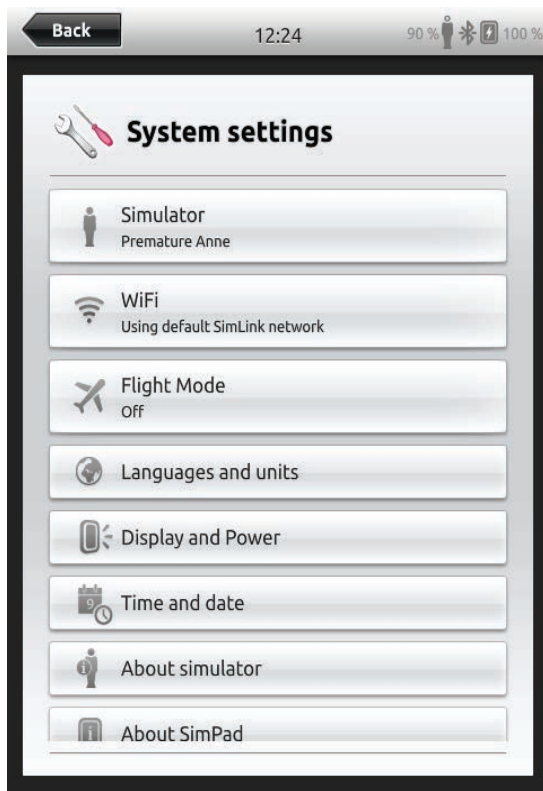
3. Cyanosis will blink until connected to SimPad



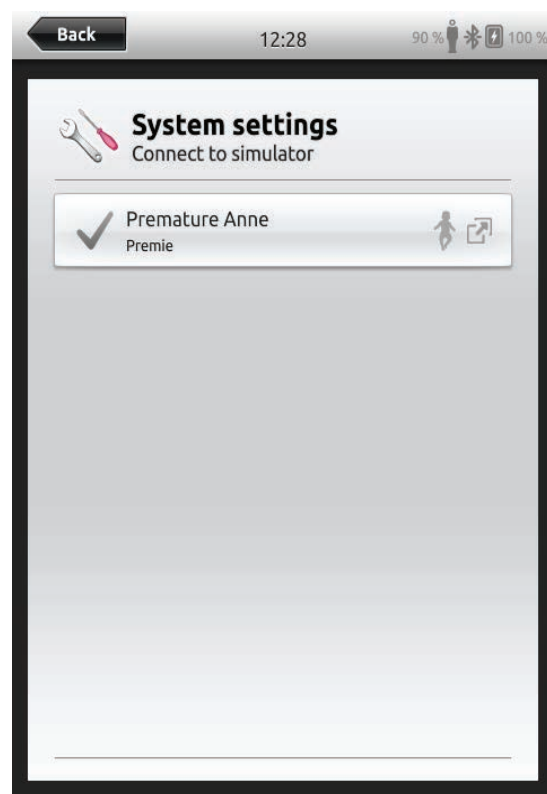
4. Select System Setting from SimPad startup screen



5. Press the Simulator button

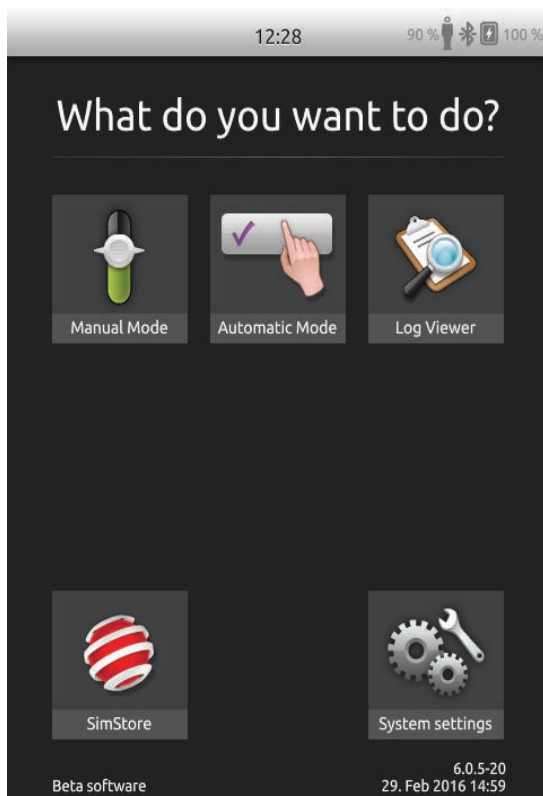


6. Press the Premature Anne button

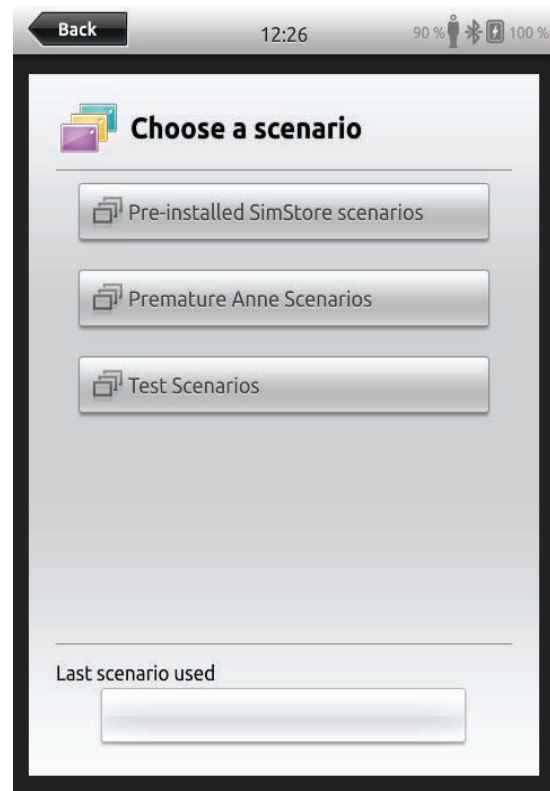


Follow the sequence below to access scenarios

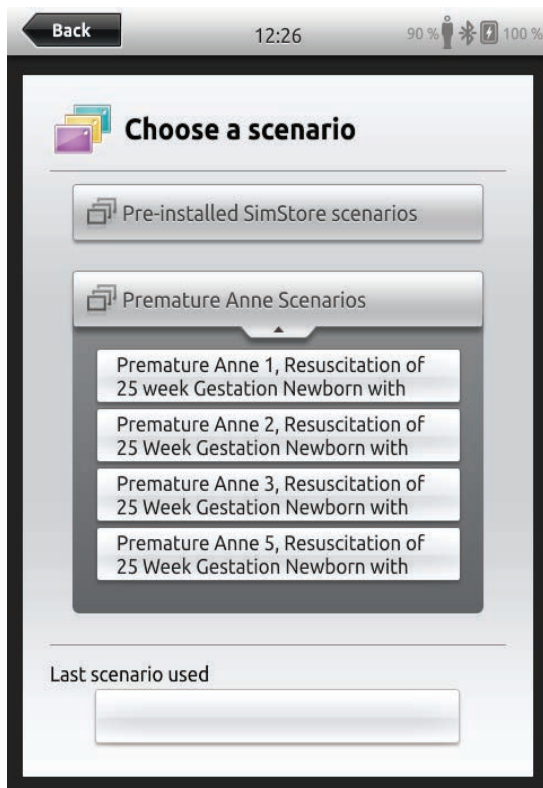
1. Select Automatic Mode from start-up screen



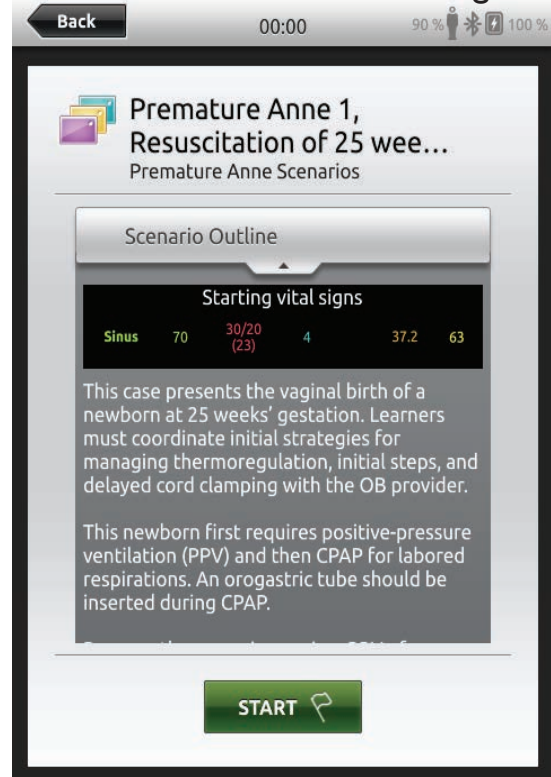
2. Select NRP Scenarios Premature Anne



3. Select applicable scenario from menu



4. Scenario outline and learning objectives can be reviewed before starting the case



5. Add Session information and student details if required before continuing

Back 00:00 90% 100%

Session information

14. Mar 2016

Name session: Premature Anne 1, Resuscitation of 25 week Gestation Newborn with PPV and CPAP 1

Instructor:

Participant 1:

Participant 2:

Participant 3:

Add participant

Debriefing server
No debriefing server

OK

6. Scenario is now running

Menu 00:03 90% 100%

Sinus HR 70 30/20 (23) RR 4 etCO₂ 34 37.2 (36.1) SpO₂ 63

Before birth; Learners should prepare for the birth. When appropriate, select "Baby delivered" coordinated with OB provider delivering the baby.

Preparing for delivery

Preparing for delivery 2

Pre-birth questions	Teamwork & Communication
Ask about gestational age 0	Assemble team 0
Ask about number of fetuses 0	Identify team leader 0
Ask about appearance of amniotic fluid 0	Assign tasks 0
Ask about identified risk factors 0	Discuss plan of care with family 0

00:00 Session started: Premature Anne 1, Res...