

Bleeding Trauma Module Set

Directions for Use

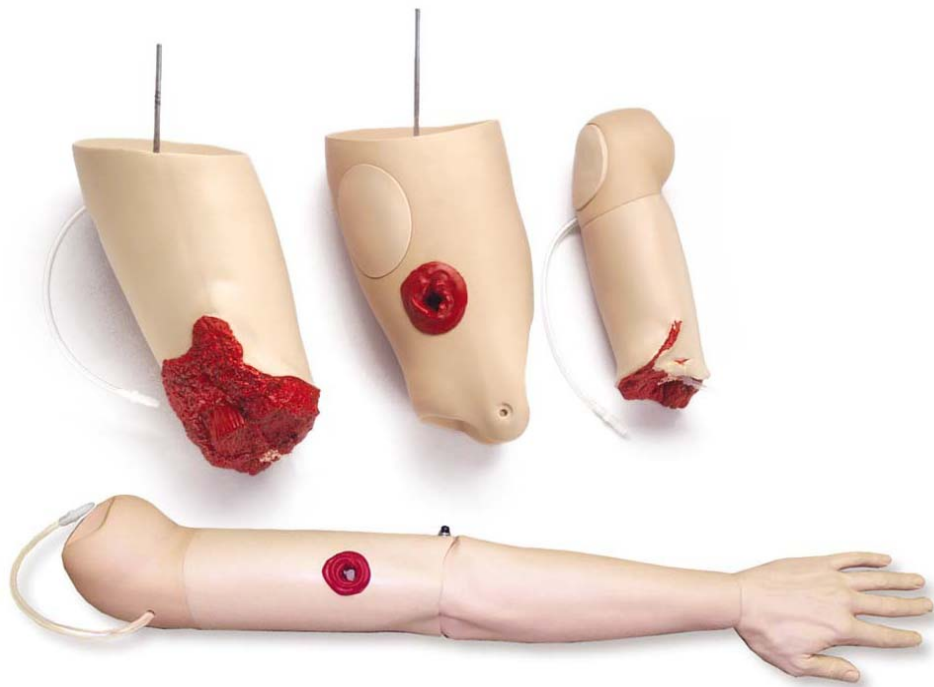


TABLE OF CONTENTS

Items Included	4
Skills Taught	5
Attaching Modules to Manikin	6
Set-up Procedures for Connecting Blood Bags to Modules	7
Instructions for Use:	
Bleeding Trauma Amputation Arm	8
Bleeding Trauma Amputation Thigh	9
Bleeding Trauma Thigh	10
Bleeding Trauma Arm	11
Cleaning Modules after Use	12
Care and Maintenance	12
Replacement Parts	13

The 38 15 50 Bleeding Trauma Module Set, 38 15 53 Bleeding Trauma Amputation Arm Module, 38 15 52 Bleeding Trauma Amputation Thigh Module, 38 15 51 Bleeding Trauma Thigh Module and 38 15 55 Bleeding Trauma Arm are all designed to teach the rapid identification and effective management of bleeding control, per ATLS guidelines or military procedure, to prevent potential loss of life and limb.

As a result of quality construction and the ease of replacing individual parts, this simulator should provide many sessions of training when reasonable care and maintenance are practiced.

Items Included:

38 15 50 Bleeding Trauma Module Set:

- (1) Bleeding Trauma Amputation Arm (Right)
- (1) Bleeding Trauma Amputation Thigh (Left)
- (1) Bleeding Trauma Thigh (Right)
- (1) Bleeding Trauma Arm (Left)
- (4) Reservoirs with Tubing
- (1) Simulated Blood
- (1) Carry Case
- (1) Laerdal Global Warranty Booklet

Modules Purchased Separately Include:

38 15 51 Bleeding Trauma Thigh Kit:

- (1) Bleeding Trauma Thigh (Right)
- (1) Reservoir with tubing
- (1) Simulated Blood

38 15 52 Bleeding Trauma Amputation Thigh Kit:

- (1) Bleeding Trauma Amputation Thigh (Left)
- (1) Reservoir with tubing
- (1) Simulated Blood

38 15 53 Bleeding Trauma Amputation Arm Kit:

- (1) Bleeding Trauma Amputation Arm (Right)
- (1) Reservoir with tubing
- (1) Simulated Blood

38 15 55 Bleeding Trauma Arm Kit:

- (1) Bleeding Trauma Arm (Left)
- (1) Reservoir with tubing
- (1) Simulated Blood

Skills Taught:

Bleeding Trauma Amputation Arm Module:

- Tourniquet application
- Training of proximal artery compression

Bleeding Trauma Amputation Thigh Module:

- Tourniquet Application
- Training of proximal artery compression

Bleeding Trauma Thigh Module:

- Application of compressive dressing
- Training of proximal artery compression
- Deep gauze pack placement

Bleeding Trauma Arm Module:

- Training of arterial pressure application
- Tourniquet application
- Gauze packing
- Dressing techniques

Attaching Modules to Manikin:

Arms:

To attach arms: (Photo 1)

1. Remove chest skin and chest plate from manikin.
2. Disconnect cable from BP arm.
3. Remove wingnut from hardware.
4. Locate hole in shoulder.
5. Remove arm plug
6. Remove hardware.
7. Place arm module in hole in shoulder.
8. Reinstall hardware.
9. Replace chest plate and chest skin in manikin.

To remove arm, reverse procedure.

Laerdal Recommends:

Use existing hardware on manikin to attach arm and leg trauma modules.



Photo 1

Thighs:

To attach thighs:

1. Remove abdominal module from manikin.
2. Remove thigh pad from leg.
3. Locate hole in pelvis where leg is attached.
4. Remove hardware.
5. Insert module into hole in pelvis. Bolt is cast into thigh modules. (Photo 2)
6. Twist into place.
7. Reattach hardware on inside of manikin.
8. Replace abdominal module on manikin.

To remove legs, reverse procedure.

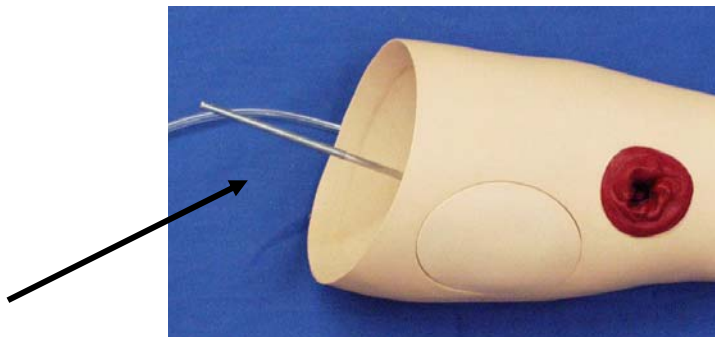


Photo 2

Set Up Procedures for Connecting Blood Bag to Modules:

1. Follow instructions on Simulated Blood bottle.
2. Mix Simulated Blood in the bag.
3. Connect module to bag, via tubes and connector.
(Photo 3)

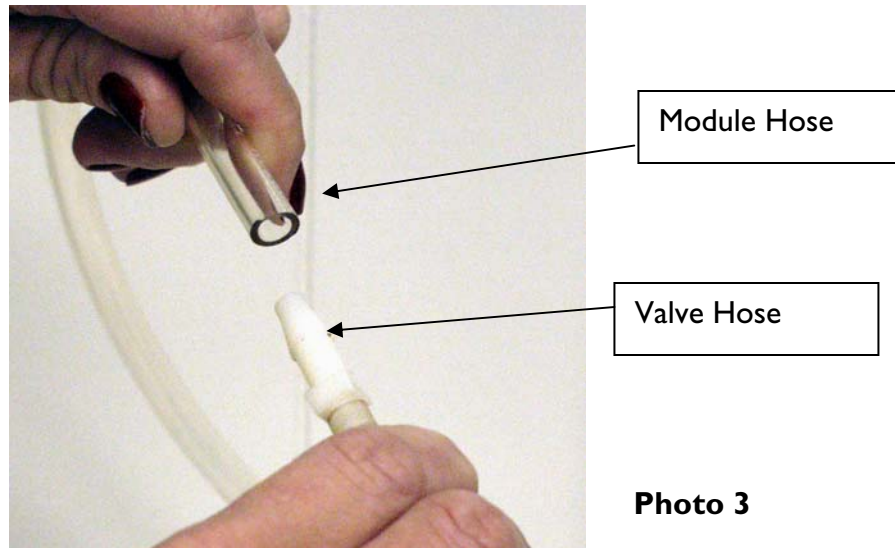


Photo 3

4. Attach valve to tube.
5. Control blood flow using clamp. (Photo 4)

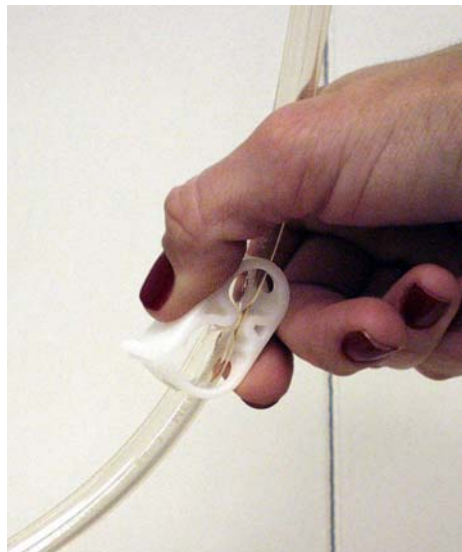


Photo 4

6. Open clamp – Blood will flow through tube and out of wound.



Instructions for Use - Bleeding Trauma Amputation

Arm module:

To Stop Bleeding:

1. Apply direct pressure to simulated wound to control bleeding.
2. If bleeding continues, apply pressure to brachial artery area. (Photo 5)

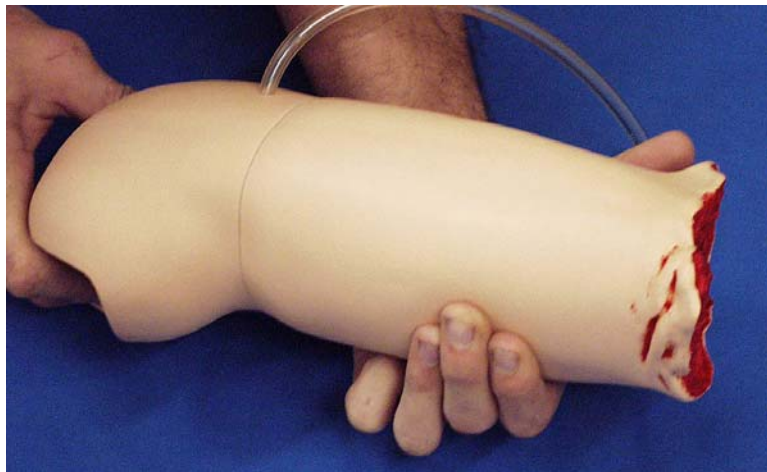


Photo 5

3. If bleeding continues, apply tourniquet, per emergency care protocol. The bleeding should now be stopped.
4. Dress the wound.



Instructions for Use - Bleeding Trauma Amputation

Thigh module:

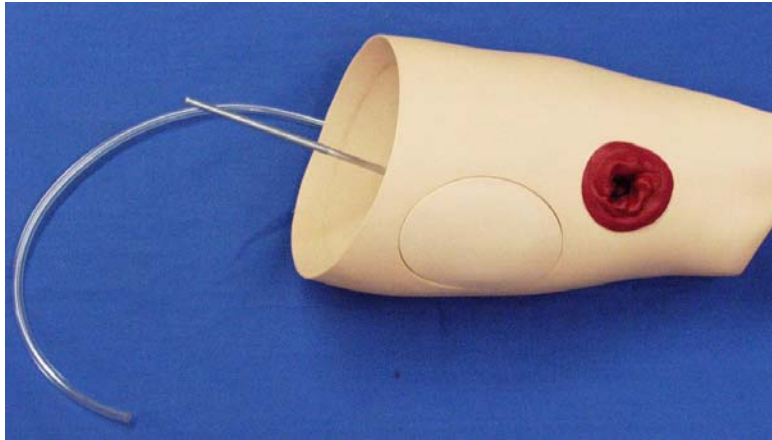
To Stop Bleeding:

1. Apply direct pressure to simulated wound to control bleeding.
2. If bleeding continues, it can be stopped by applying pressure to wound area or pressing femoral artery area. (Photo 6)



Photo 6

3. If bleeding continues, apply tourniquet, per emergency care protocol.
The bleeding should now be stopped.
4. Dress the wound.



Instructions for Use - Bleeding Trauma Thigh module:

To Stop Bleeding:

1. Apply direct pressure to simulated wound to control bleeding.
2. If bleeding continues, apply pressure to femoral artery area. (Photo 7)

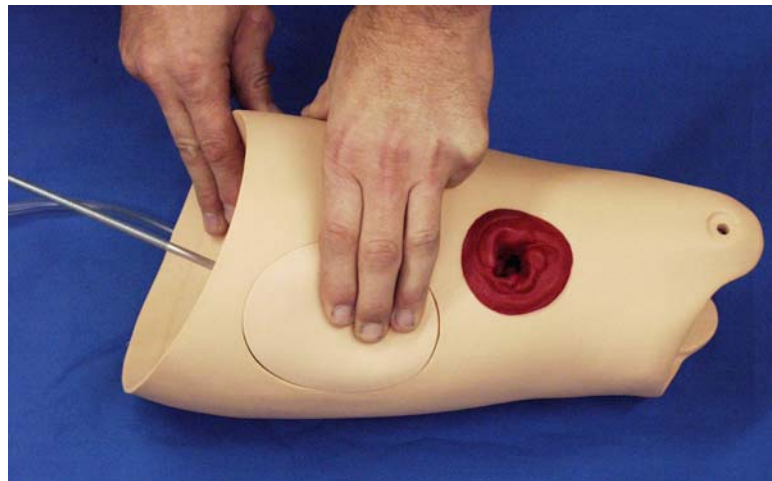


Photo 7

3. Pack wound with gauze.

Note: Chipped and broken bone can be palpated with fingertip.
(See Photo 8)



Photo 8

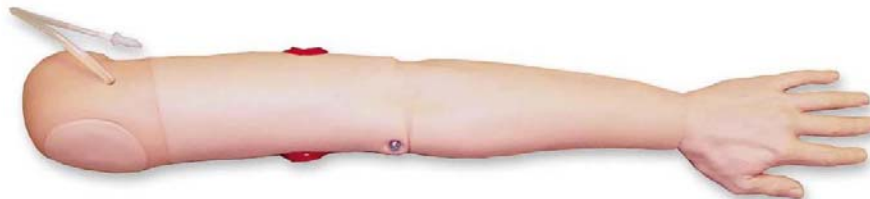
4. When wound is packed with gauze, release pressure on femoral pulse area. The bleeding should now be stopped.
5. Dress the wound.

Instructions for Use – Bleeding Trauma Arm module

To Stop Bleeding:

1. Apply direct pressure to simulated wound to control bleeding. (Photo 9)
2. If bleeding continues, apply pressure to artery area.
3. Pack wound with gauze.
4. When wound is packed with gauze, release pressure on brachial pulse area. The bleeding should now be stopped.
5. Dress the wound.

Photo 9



Cleaning Modules after Use:

1. Modules, bag and tubing should be rinsed with water.
2. Flush water through blood system and out of wound.

Care and Maintenance:

1. Clean with mild soap and water; do not submerge module or parts in cleaning fluids or water.
2. Use only on clean surface. Avoid felt tipped markers, ink pens, acetone, iodine or other staining products and avoid placing the modules on newsprint or inked lines of any kind.
3. To ensure longevity, modules should be cleaned after each training session and a general inspection should be conducted regularly.
4. Modules and all other parts should be drained and air-dried thoroughly before storage and disinfected when needed.
5. Articulating parts will benefit from a light application of talcum powder prior to training sessions.
6. Store properly between teaching sessions.



Cautions and Warnings

This product contains **Natural Rubber** latex which may cause allergic reactions when in contact with humans.

Replacement Parts:

Product Number:

38 15 51

38 15 52

38 15 53

38 15 55

300-00750

262-00550

276-00150

Description:

Bleeding Trauma Thigh

Bleeding Trauma

Amputation Thigh

Bleeding Trauma

Amputation Arm

Bleeding Trauma Arm

Simulated Blood

Concentrate

IV Bag

Carrying Case

Optional Equipment:

ST-7001

Stand

© Copyright Laerdal Medical, Gatesville TX. All rights reserved
1004870 rev C
August 30, 2006