

LinkBox connection with LLEAP

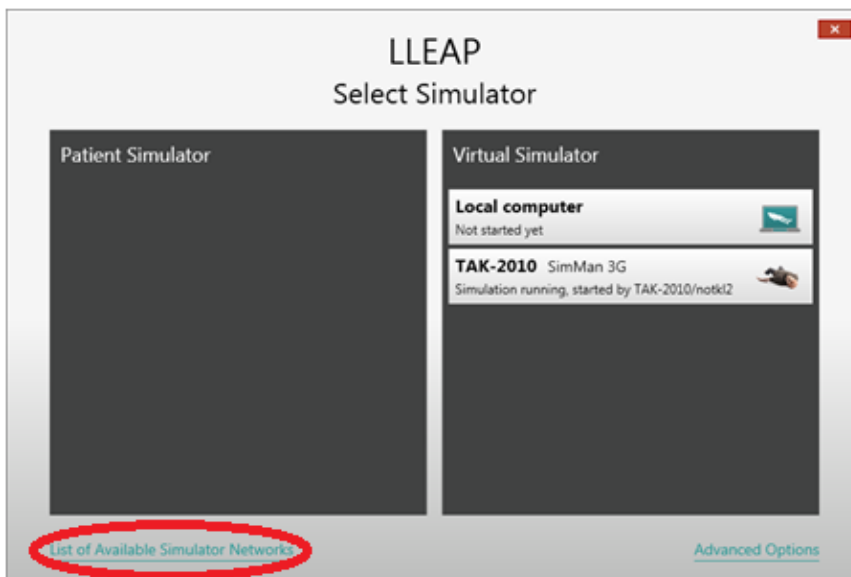
Issue: Windows 8.1 does not support wireless AdHoc network from its GUI interface. Simulators using a LinkBox to connect to LLEAP (p.t. SimMom) will not show up in the list of “Patient Simulators” by default

The W8.1 users of LLEAP will not find their wireless LinkBox Simulator unless they follow this procedure.

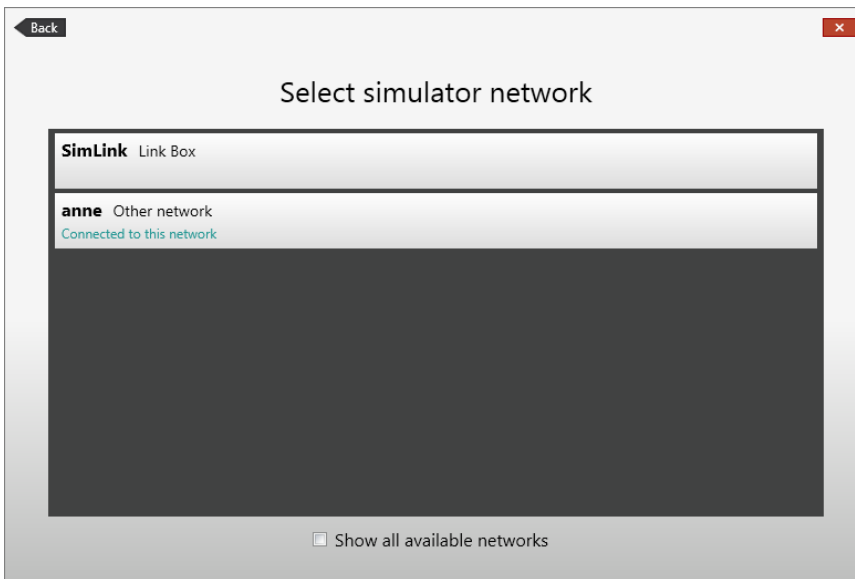
Instructions:

1. When a LinkBox Simulator does not show up in the list of available manikins, click on the “List of Available Simulator Networks”
2. Chose the SimLink Link Box network
3. Connect to the AdHoc network SimLink.
4. If User control is active, choose yes to allow changing the IP adress.
5. The PC will now get an IP address in the 172.26.xxx.xxx range.
6. The LLEAP PC can no longer connect to the internet or to SimView
7. To connect to an other simulator connect to the correct network and the PC will recive a new IP adress. The manikins on this network will now be available.

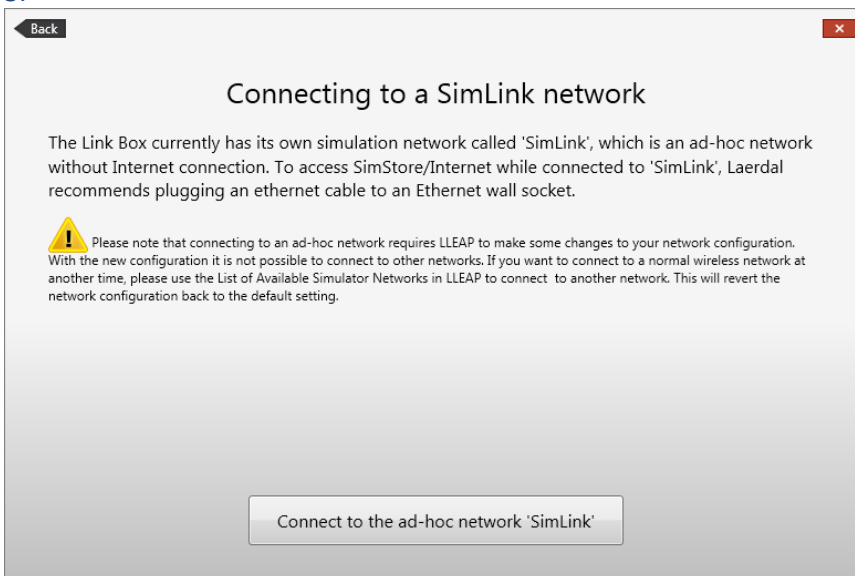
1.



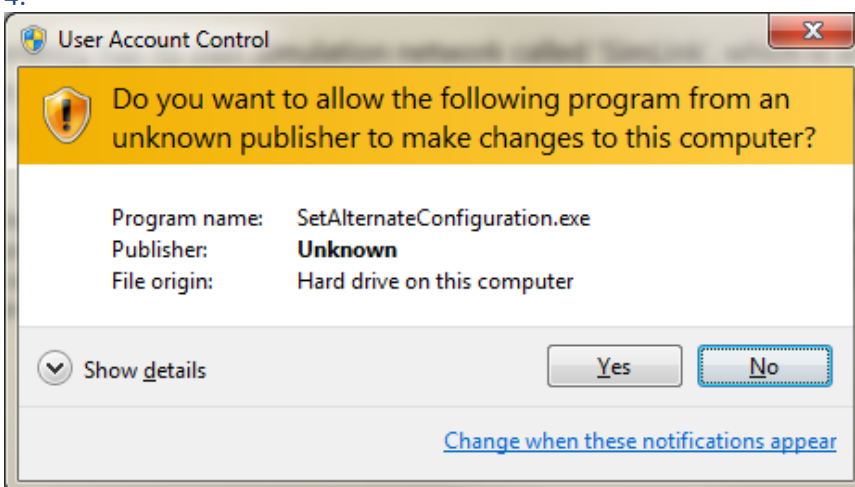
2.

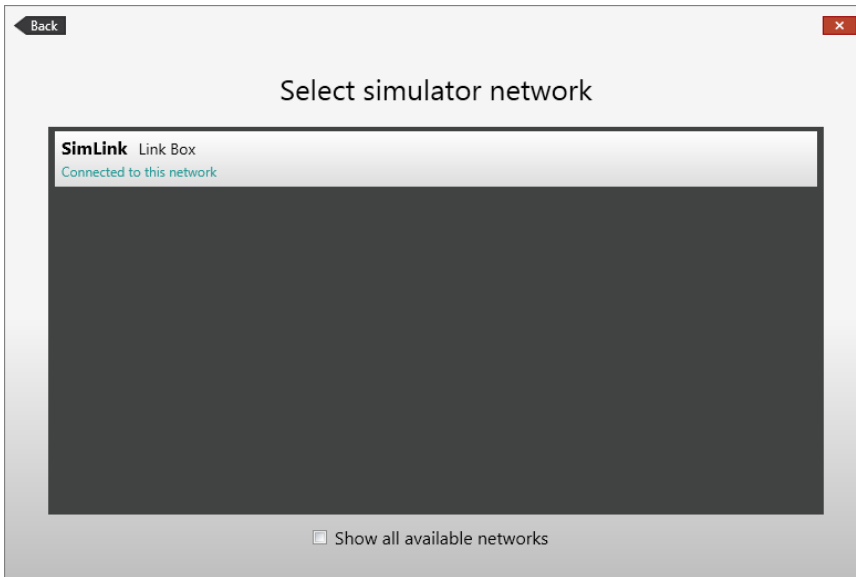


3.



4.





5.

