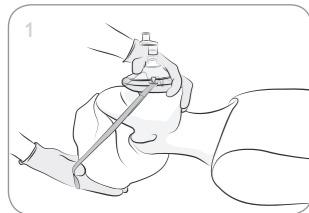
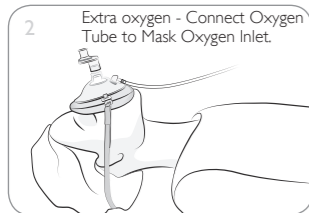


Use of Mask with Oxygen

Place Head Strap



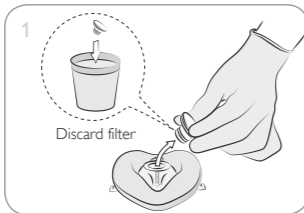
Strapping Mask to face facilitates CPR and spontaneous inhalation of oxygen.



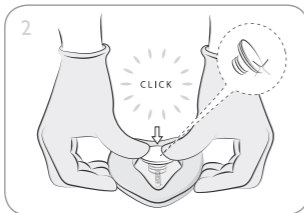
Select oxygen flow (see oxygen chart). Provide Mouth to Mask ventilation if necessary.

Changing Filter

Remove Used Filter



Hold Mask and pull Filter outwards and sideways, so it separates from Mask.



Place the mask on a hard, flat surface and insert a new filter. Firm pressure is required to assured that filter is properly attached.

Note

- The mask can be used without filter.
- Ensure the mask is folded when changing filter.

Cleaning and Disinfection

Warning

The One-way Valve and Filter are designed for single patient use only. Do not re-use. Re-use will lead to increased risk of cross contamination, degradation of performance, and/or device malfunction. Laerdal is not responsible for any consequences of re-use.

Mask can be cleaned and disinfected, and reused after manikin training and patient use.

1. Wash and scrub in warm soapy water.
2. Rinse in clean water for min 1 min.
3. Submerge for 10 minutes in a 0.5% Sodium Hypochlorite solution.
4. Rinse under running tap water for 3 min.
5. Allow to dry completely.

Patient Use

The mask can be re-used after it has been cleaned and disinfected according to instructions. One-way Valve and filter must be discarded after single patient use.

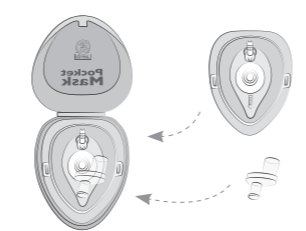
Cautions

Do not pasteurize, boil or steam autoclave.

Symbol Glossary

MD	Medical Device
-----------	----------------

Storage

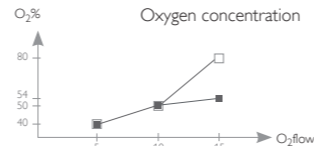


Material Chart

Mask	Filter	Valve	Oxygen inlet	Hard case	Soft Pouch	Poly Bag
PVC	PP	PC and silicone rubber	PC and silicone rubber	PP	PA	LDPE

Not made with natural rubber latex

Oxygen Chart



- Inhalation by spontaneously breathing patient
- Ventilation of non-breathing patient

Technical Specifications

Temperature limits	
Operating	-10 °C (14 °F) to 40 °C (104 °F)
Storage	-40 °C (-40 °F) to 50 °C (122 °F)

Expiratory resistance for the patient*

Mask & One-way Valve	2.9 cm H ₂ O
Mask, Filter & One-way Valve	5.2 cm H ₂ O

Inspiratory resistance for the patient*

Mask & One-way Valve	2.4 cm H ₂ O
Mask, Filter & One-way Valve	4.7 cm H ₂ O

Performance data are nominal values only.

* As per standard test method

Pocket Mask w/One-way Valve and Filter

82 xx xx	CE	This product is in compliance with the essential requirements of EU Council Directive 93/42/EEC as amended by EU Council Directive 2007/47/EC.
----------	-----------	--

Pocket Mask w/One-way Valve, Filter, Oxygen inlet and Head strap

83 xx xx	CE	2460	This medical device complies with the general safety and performance requirements of Regulation (EU) 2017/745 for medical devices.
----------	-----------	------	--

Parts

82 06 10	Filter
82 04 10	One-way Valve

Mask in container

Dimensions	13 cm x 11 cm x 4 cm (5.1 in x 4.3 in x 1.6 in)
Weight	110 g (4 oz)

Pocket Mask is a trademark of Laerdal Medical AS

© 2020 Laerdal Medical AS. All rights reserved.

Manufactured in China for: Laerdal Medical AS
P.O. Box 377, Tanke Svilandsgate 30, 4002 Stavanger, Norway
T: (+47) 51511700

Distributed in US by: Laerdal Medical Corporation
167 Myers Corners Road, Wappingers Falls, NY 12590, USA
Tel: +1 (800) 431-1055, +1 (845) 297-7770
FAX +1 (800) 227-1143

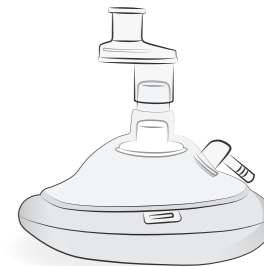
Distributed in Canada by: Laerdal Medical Canada LTD,
151 Nashdene Rd., Unit #45 Toronto, ON, Canada, M1V 4C3
T: +1 (416) 298-9600,
Toll free 888/LAERDAL (523-7325)
ou en français (800) 567-9987
Fax: +1 (416) 298-8016

Printed in China

www.laerdal.com

Pocket Mask

User Guide



Intended Use

The Pocket Mask is designed for mouth-to-mask ventilation of a non-breathing adult, child or infant.

Important Information

RX Only (US)

Caution: Federal law restricts this device to sale by, or on the order of a physician.

This device should only be used by persons who have received adequate training.

Read this User Guide and become familiar with the operation of the product prior to use. Use the product only as described in this User Guide.

Observe all warnings, cautions and instructions. Retain this booklet for future reference.

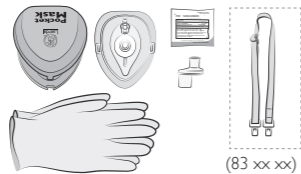
Other ventilation equipment, e.g. a bag-valve resuscitator or oxygen powered resuscitator, may be coupled to the 15 mm connection port (without the One-way Valve) of the Pocket Mask.

⚠ Warnings and Cautions

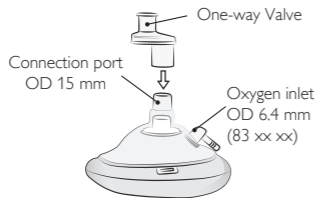
A Warning states a condition, hazard, or unsafe practice that can result in serious personal injury or death.

A Caution states a condition, hazard, or unsafe practice that can result in minor personal injury or damage to the product.

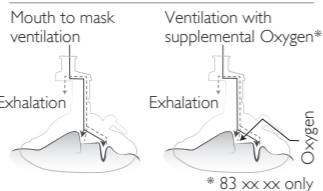
Items Included



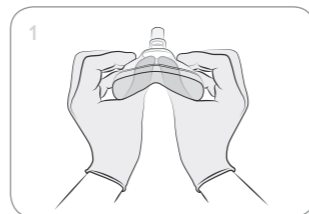
Overview



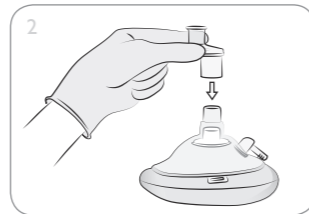
Function



Setup



Check that the Filter is snapped firmly into place, and push out dome.

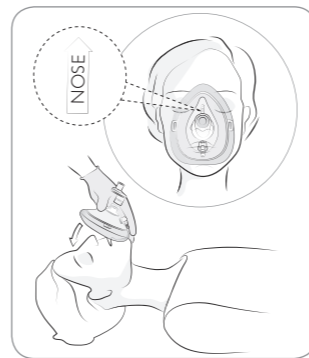


Attach One-way Valve to mask port.

⚠ Caution

At lower temperatures the Pocket Mask can be harder to unfold.

Placement of Mask on Adult and Child



Ensure position end marked "nose" is over the patient's nose.

Contamination

If contaminated, remove mask and clear patient's airway. Clear mask by shaking or sweeping out foreign material. Blow through valve to verify operation. Reapply mask and continue ventilation.

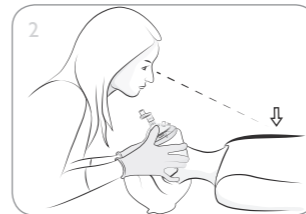
⚠ Caution

If the product becomes too contaminated or difficult to clear, continue with ventilation without the mask.

Use of Mask on Adult and Child

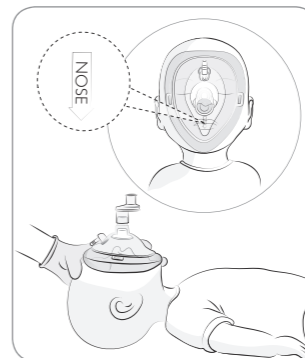


Seal as illustrated. Blow slowly until chest rises.



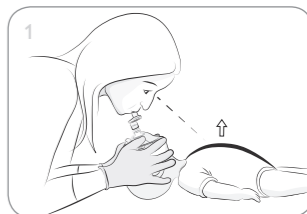
Allow patient to exhale.

Placement of Mask on Infant

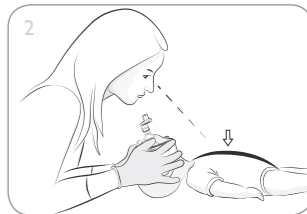


Position the end marked "nose" under the infant patient's chin.

Use of Mask on Infant



Seal as illustrated. Blow slowly until chest rises.



Allow patient to exhale.