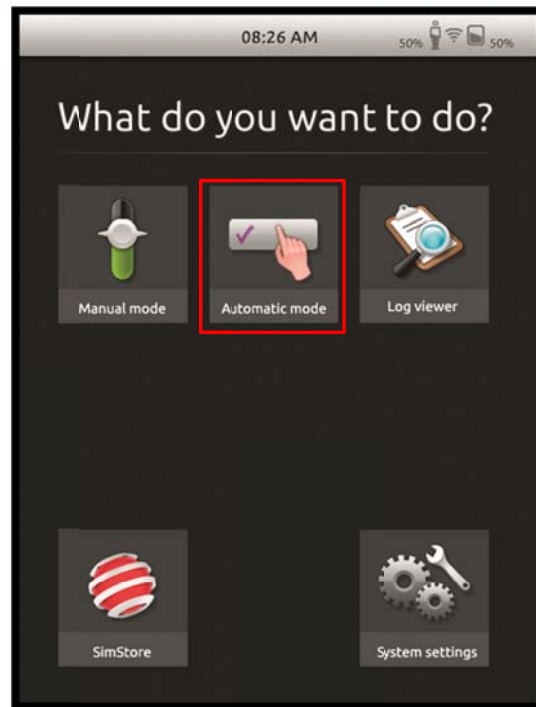




SimPad – Job Aid Start an Automatic Mode Scenario

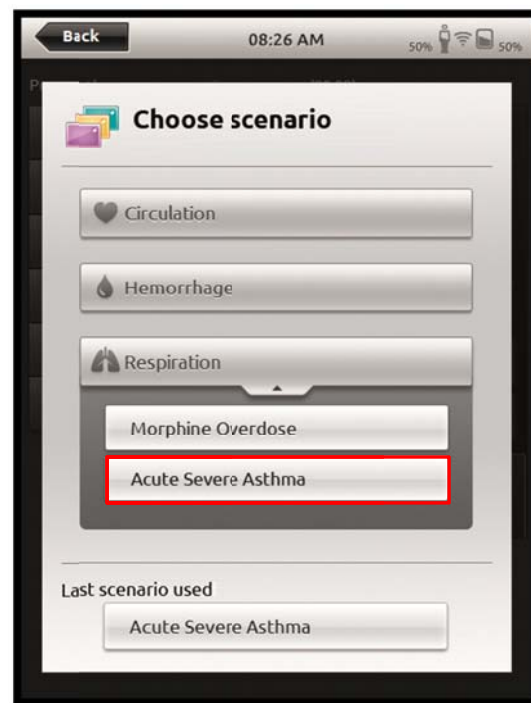
Tap on Automatic Mode icon.



Choose a scenario from the list of available content.

Note: your SimPad comes with a sample Asthma scenario.

Additional scenarios are available from SimStore.

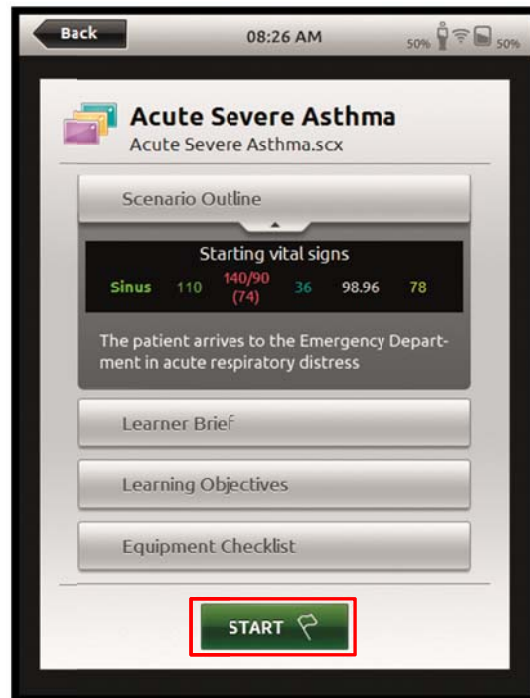




SimPad – Job Aid Start an Automatic Mode Scenario

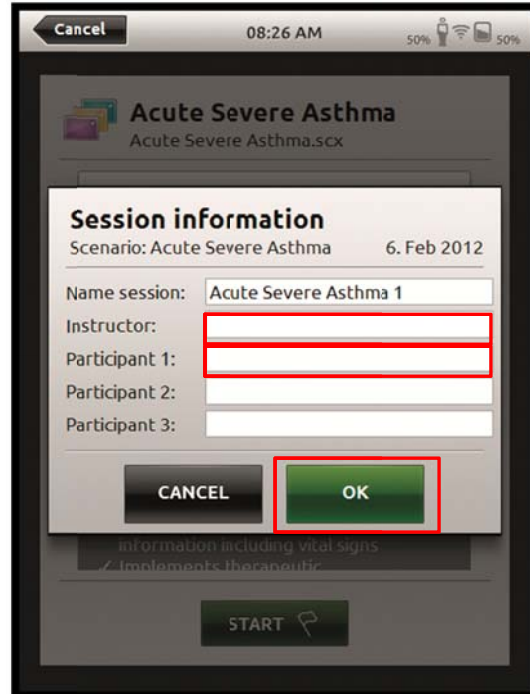
Review the scenario's support material.

Tap Start.



Tap on a field to open the keyboard. Enter names.

Tap OK when ready to begin the session.





SimPad – Job Aid Start an Automatic Mode Scenario

SimPad automatically begins the scenario.

We recommend you view additional tutorials and job aids about registering events and viewing the session log.

