



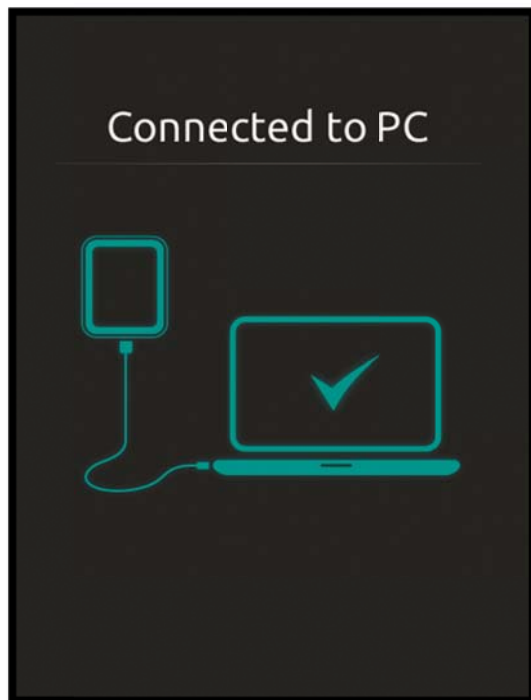
SimPad – Job Aid Import SimStore Content - Offline

Note: When the SimPad cannot be connected to a network with internet access, the instructor may import SimStore content offline.

You will need the SimPad and supplied USB cable to connect to a PC with internet access.



Connect SimPad to a PC using the supplied USB cable.





SimPad – Job Aid Import SimStore Content - Offline

Note: When connected by USB cable, Windows Explorer shows SimPad's folders and files.

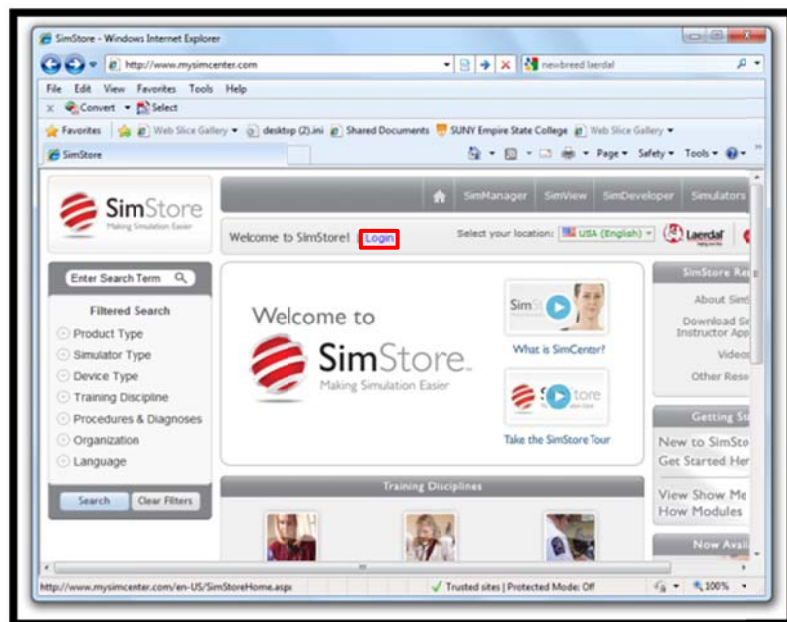
Set SimPad aside for a moment – the next few steps are for the PC. Do not disconnect SimPad from your PC.



Using your PC, open the web browser and log into:

www.mysimcenter.com

Click Login.



www.laerdal.com



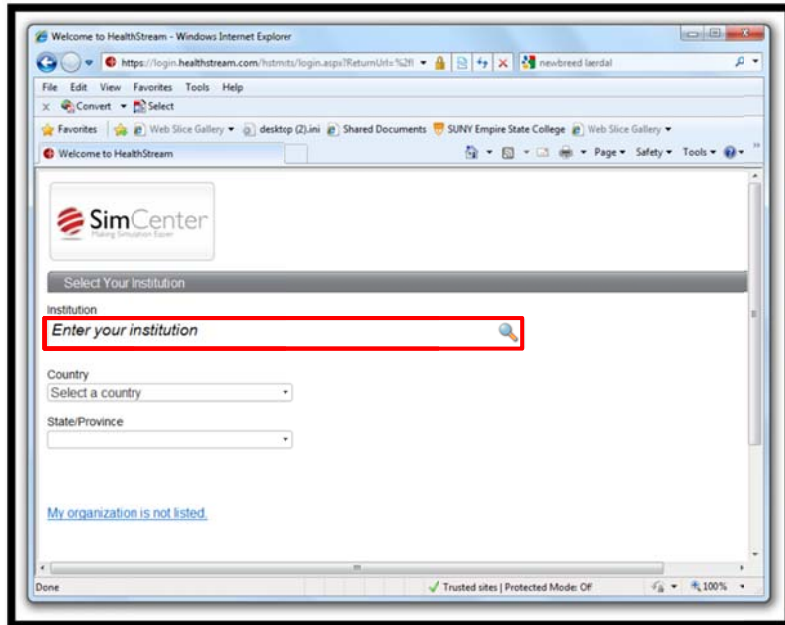
Laerdal
helping save lives



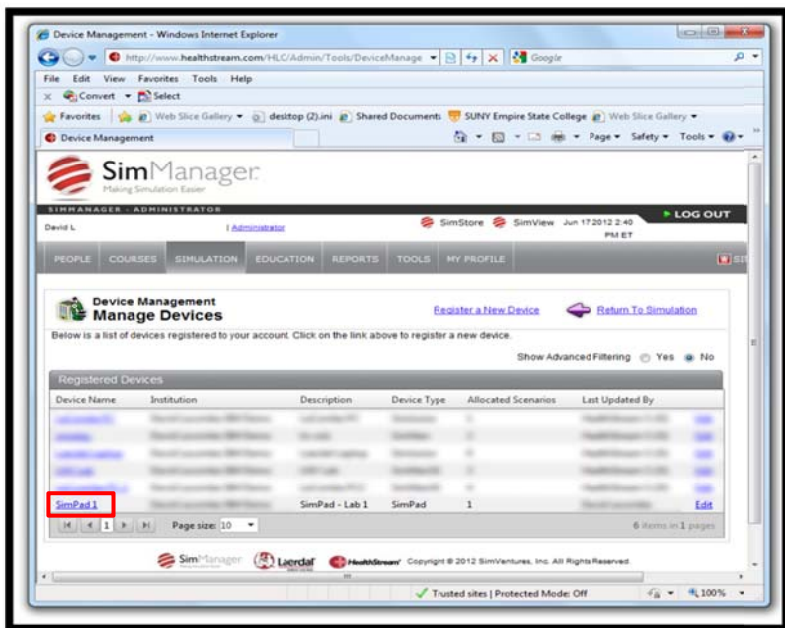
SimPad – Job Aid Import SimStore Content - Offline

Log into your SimStore account.

Note: Contact the local Laerdal Customer Service if your institution name is not listed.



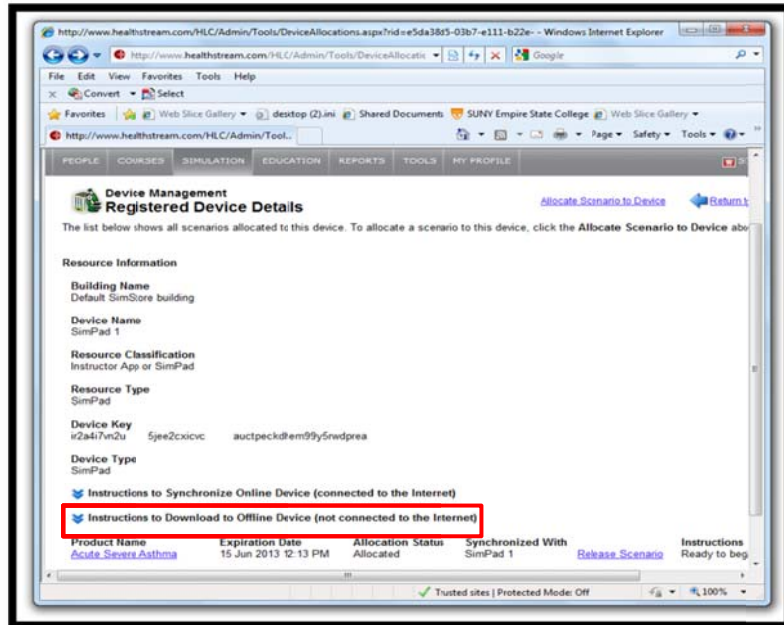
Select the SimPad device.





SimPad – Job Aid Import SimStore Content - Offline

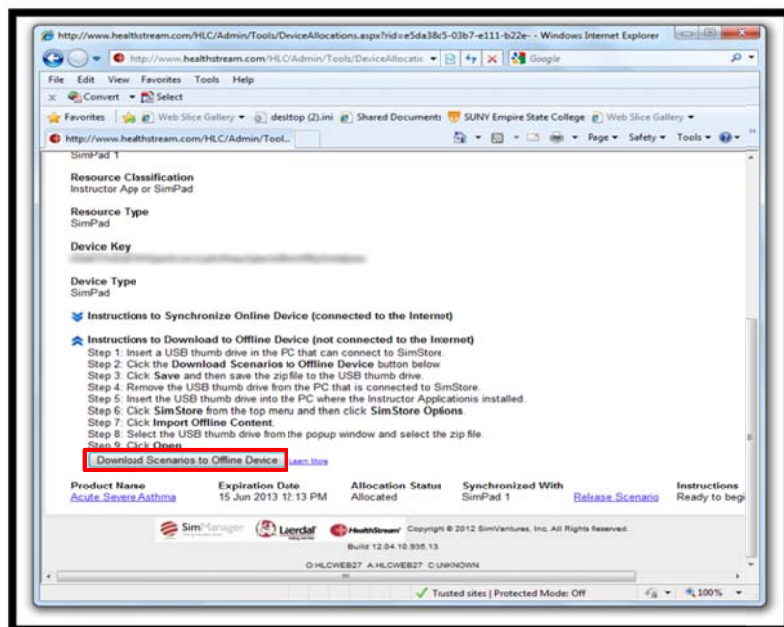
Select Instructions to Download to Offline Device (not connected to the Internet).



Select Download Scenarios to Offline Device.

Note: the allocated, but not yet synchronized Acute Severe Asthma scenario, at the bottom of the screen.

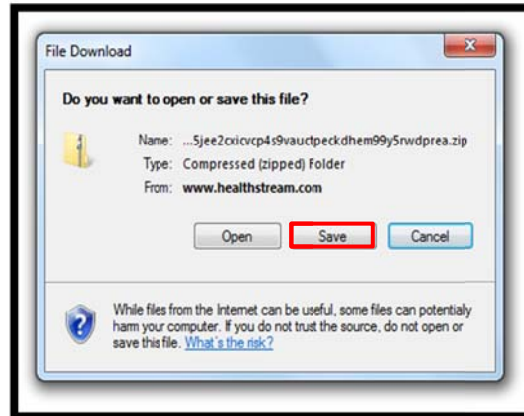
The remaining steps show how to download the scenario file to the PC and import the content into SimPad.



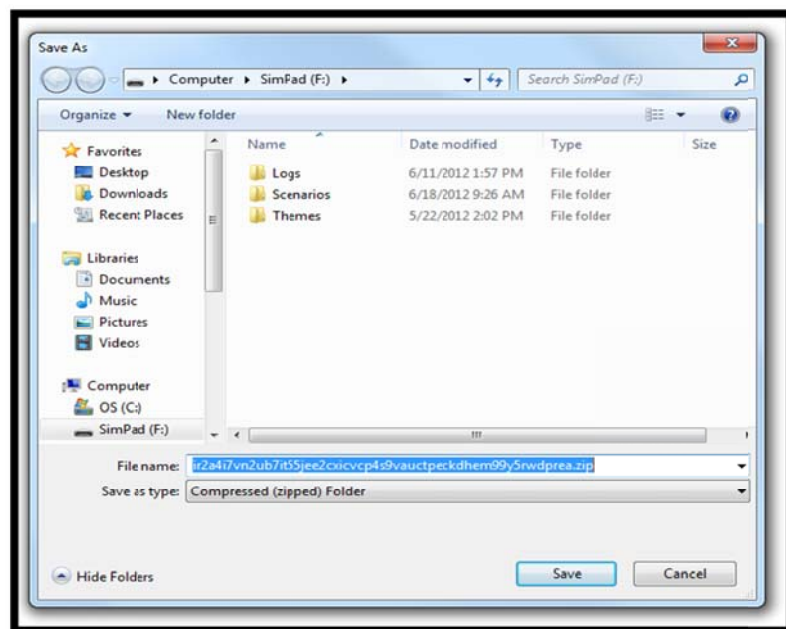


SimPad – Job Aid Import SimStore Content - Offline

Select Save.



Save the Zip folder
directly into the root of
the SimPad directory.

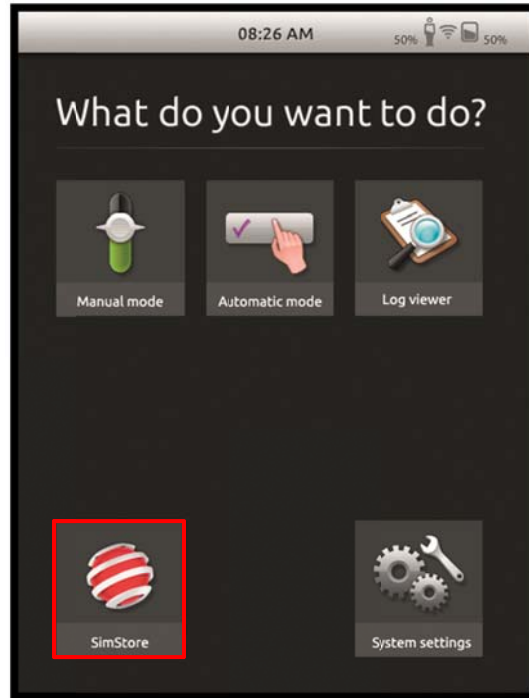




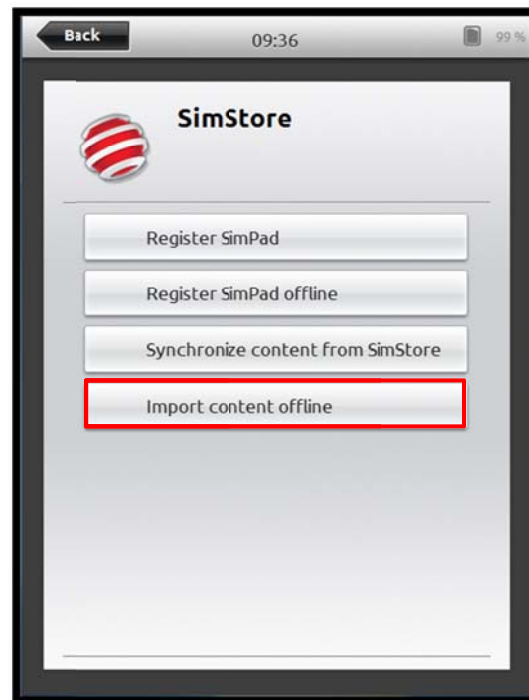
SimPad – Job Aid Import SimStore Content - Offline

Disconnect the USB cable from SimPad when the file is saved.

Select SimStore icon.



Select Import content offline.





SimPad – Job Aid Import SimStore Content - Offline

When synchronizing the Synchronize button is greyed out.

The synchronizing process may take a few moments to complete.

The File was successfully saved message appears when the content is imported.

You may now use your SimPad.

