

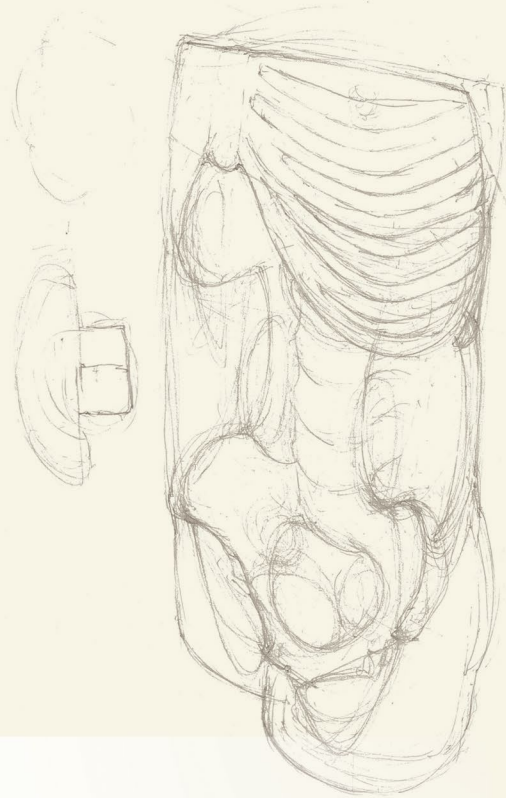
2017 Catalogue
Learning has never been more lifelike

limbsandthings.com

DISTRIBUTED BY



Hello!



Limbs & Things was established in Bristol in 1990 by medical artist Margot Cooper to design and manufacture medical training models.

Margot's vision was to enable healthcare practitioners to become more competent and confident professionals, with the ultimate aim of improving patient outcomes and reducing medical error.

Our manufacturing and corporate head office in Bristol has continued to grow over the years, along with our range of new and innovative products launched each year.



Today, we have offices in the USA, Australia and Sweden as well as partnerships with our distributors across the globe.

Thank you for choosing
Limbs & Things

The latest launches from Limbs & Things

*Abdominal
Examination
Trainer*

For practising the palpation, auscultation and percussion elements of abdominal examination

See Page 12



*New Skin
Tone for
Venepuncture
Range*

We have developed a new skin colour for use with our Venepuncture Arms, for a wide appeal across a number of markets

See Page 21



Category contents

Physical Examination Skills

Female Examination	6
Male Examination	9
Abdominal Examination	12

Procedural Skills

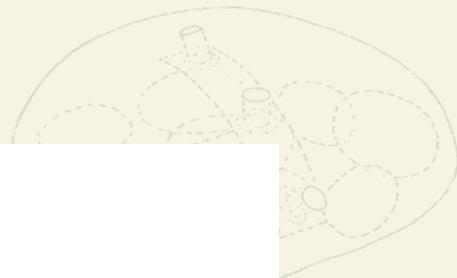
Urinary Catheterisation	16
Chest Trauma Management	18
Venepuncture	20
Injection Technique	24
Central Line Management	24

Specialist Skills

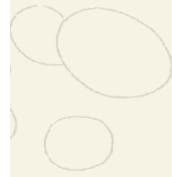
Gynaecology	26
Obstetrics & Midwifery	28

Bundles

Undergraduate Medicine	34
Obstetrics & Midwifery	35
Nursing	36



*Physical
Examination
Skills*



Clinical Female Pelvic Trainer (CFPT) Mk 3 - Standard & Advanced

60900 Standard

Simulated Patient



The CFPT Mk 3 is an anatomically accurate and tactile representation of the female pelvis. It is the ideal platform for hands-on examination as well as diagnosis of female conditions and minor pathologies. It can be used for many levels of training from undergraduate onwards, as well as in family health.

In 2014 the 7 uterine modules included with the Advanced model were used in a study by gynaecologists and doctors. Participants performed speculum and bi-manual examinations. The modules were found to be realistic and have construct validity.¹

¹ Realism and construct validity of novel pelvic models of common gynecologic conditions Edwards, S, Cass, G, Lenguerrand, E, Fox, R & Crofts, J. 2014 International Journal of Gynaecology and Obstetrics: the official organ of the International Federation of Gynaecology and Obstetrics, vol 124, pp. 270-3

Skills

- Recognition of perineal and pelvic anatomy including bony landmarks
- Digital vaginal examination
- Bi-manual examination
- Cervical smear procedure (including use of speculum)
- Digital rectal examination
- Professional-to-patient communication



Abdominal wall lifts off...



... allowing uterine module to be lifted out



Anatomically accurate pelvis



Insertion of speculum prior to cervical smear

Product Qualities

Anatomy

- Abdomen, pelvis and genitalia
- Vagina, cervix, anus and lower bowel
- Advanced model comes with interchangeable uterine modules with different complications
- Modules:
 - Normal - Nulliparous Cervix
 - Large Fibroid - Nulliparous Ectropion Cervix
 - Small Fibroid - Nulliparous Polyp Cervix
 - Ovarian Cyst - Multiparous Cervix
 - Retroverted - Multiparous Cervix
 - 10-12 Weeks Pregnant
 - 14-16 Weeks Pregnant

Realism

- Abdominal wall with fat layer makes palpation realistic
- Labia can be parted realistically
- Each uterus is presented at the correct anatomical angle

Key Features

- Partial thighs aid anatomical orientation
- Soft and strong perineum and labia

Versatility

- Abdominal wall can be removed quickly and easily
- Modules can be changed quickly and easily

Safety

- Latex free

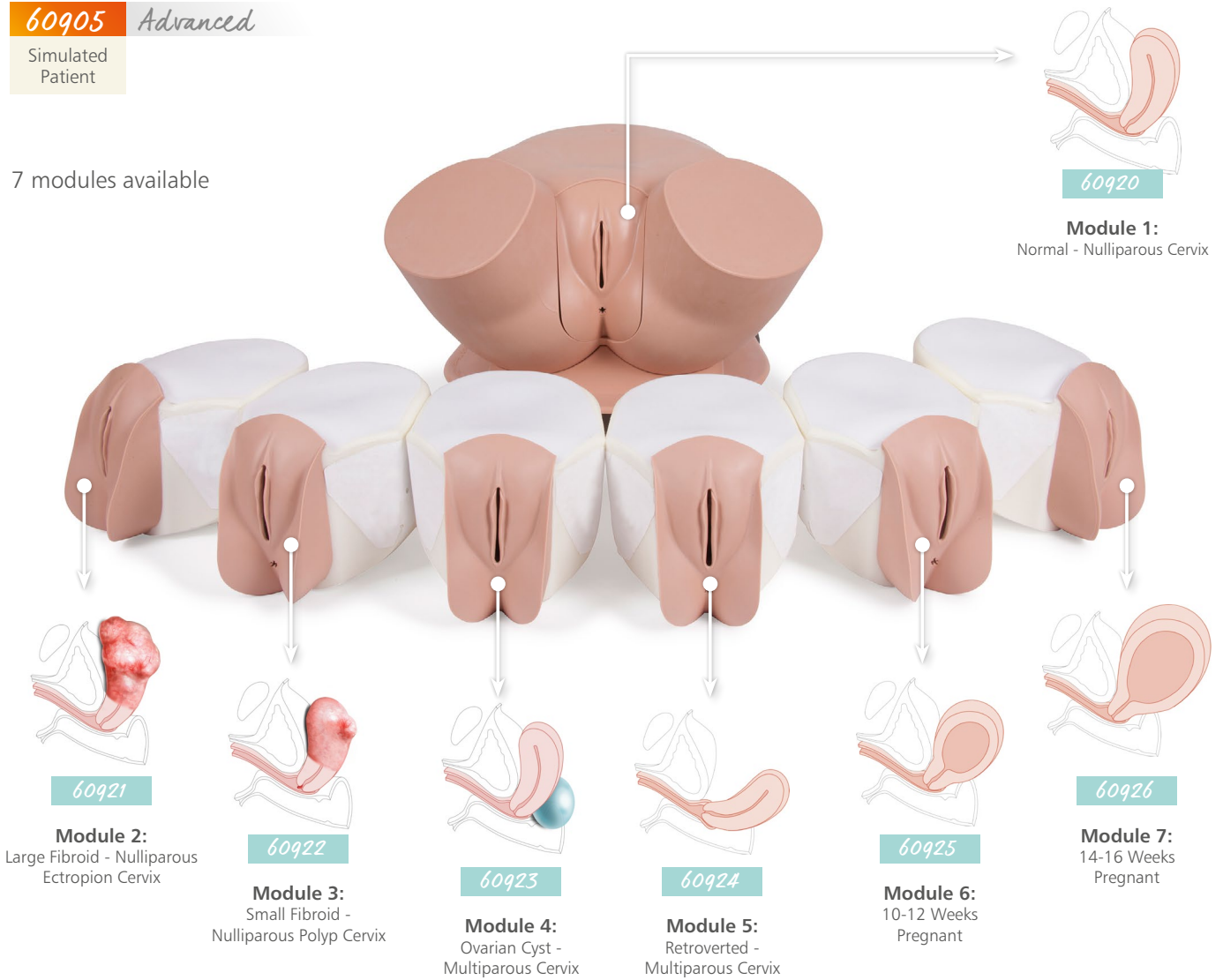
Cleaning & Care

- Skin surface is washable using soap and water

60905 *Advanced*

Simulated Patient

7 modules available



60920

Module 1:
Normal - Nulliparous Cervix

60921

Module 2:
Large Fibroid - Nulliparous Ectropion Cervix

60922

Module 3:
Small Fibroid - Nulliparous Polyp Cervix

60923

Module 4:
Ovarian Cyst - Multiparous Cervix

60924

Module 5:
Retroverted - Multiparous Cervix

60925

Module 6:
10-12 Weeks Pregnant

60926

Module 7:
14-16 Weeks Pregnant

Images above are for information purposes & show a simplified representation of anatomy within the CFPT Modules

	60900	60905
• 60910 CFPT Abdominal Insert	✓	✓
• 60920 CFPT Module 1: Normal - Nulliparous Cervix	✓	✓
• 60921 CFPT Module 2: Large Fibroid - Nulliparous Ectropion Cervix	x	✓
• 60922 CFPT Module 3: Small Fibroid - Nulliparous Polyp Cervix	x	✓
• 60923 CFPT Module 4: Ovarian Cyst - Multiparous Cervix	x	✓
• 60924 CFPT Module 5: Retroverted - Multiparous Cervix	x	✓
• 60925 CFPT Module 6: 10-12 Weeks Pregnant	x	✓
• 60926 CFPT Module 7: 14-16 Weeks Pregnant	x	✓
• Lower torso	✓	✓
• Base	✓	✓
• Tube of aqueous gel	✓	✓
• Carry case	✓	✓ (x2)

Patents granted

• US6336812 • EP099027 • DE69804793 • CA 2293585 • ZL98806331 • HK1023832 • 755575 Australia

Breast Examination Trainer - Standard, Advanced & Basic

40200 Standard

40201 Advanced

40202 Basic

Simulated Patient



Breasts can be worn by a simulated patient (male or female)



Pathologies are supplied and fit securely into the holes in the Pathology Supports & Back Plates

Lymph Node Pads

Torso

Our Breast Examination Trainer provides a highly realistic learning platform for acquiring the skills required to perform Clinical Breast Examination (CBE). Featuring 6 readily interchangeable and multi-positional pathologies, providing healthcare professionals with the tools to identify various complications and pathologies, including carcinomas, cysts, fibrocystic disease and fibroadenoma. Both Simulated Patient and bench top training can be used for any undergraduate programs

running OSCEs or healthcare professionals promoting best practice techniques to trainees and patients.

This product was developed in close collaboration with leading clinicians:

- Mr Peter Donnelly, Torbay Hospital, UK
- Clinical Skills Resources Centre, University of Liverpool, UK
- Clinical Practice Centre, St James's University Hospital, Leeds, UK

Product Qualities

Anatomy

- Realistic soft tissue breast anatomy
- Pathologies supplied: carcinomas: 2cm, 3cm, 5cm, cyst, fibrocystic disease, fibroadenoma

Realism

- Soft tissue breasts look and feel realistic
- Clavicular and axilla pads for accurate lymph node placement

Key Features

- Pathologies can be placed in various predetermined location points and are easily changeable
- Dual purpose product: bench top and Simulated Patient
- Hard torso available for bench top use

Versatility

- Comfortable to wear for long periods of time during OSCEs and assessments

Safety

- Latex free

Cleaning & Care

- Skin surface is washable using soap and water

Skills

- Clinical Breast Examination (CBE)
- Self Breast Examination (SBE)
- Identification of anatomical landmarks
- Identification of lymph nodes (axillary, supra and infraclavicular)
- Location and diagnosis of pathologies
- Professional-to-patient communication

	Adv	Std	Basic
• Wearable Examination Breasts	✓	✓	✓
• 40204 Pathologies	✓	✓	✓
• 40205 Breast Examination Inserts	✓	✓	✓
• 40206 Breast Pathologies Supports	✓	✓	✓
• 40207 Breast Back Plates	✓	✓	✓
• 40208 Breast Examination Torso	✓	✓	✗
• 40203 Lymph Node Pads + Lymph Nodes	✓	✗	✗

Optional Extras

- 40209 Breast Examination Carry Case

Patents granted

• US6336812 • EP099027 • DE69804793 • CA 2293585
• ZL98806331 • HK1023832 • 755575 Australia

Examination & Diagnostic Breast Trainer

40044



Our realistic, life-size breast trainer is the ideal platform for training in the examination procedures and diagnostic techniques required for Clinical Breast Examination (CBE).

Skills

- Recognised clinical breast examination technique
- Diagnosis of pathologies:
 - Carcinoma
 - Fibroadenoma
- Aspiration of a cyst
- Self Breast Examination (SBE)

Product Qualities

Anatomy

- Simulated carcinoma and fibroadenoma
- Benign cyst for aspiration

Realism

- Breast skin is warm to the touch
- Responds to palpation in a lifelike way

Key Features

- Variable cyst volume

Versatility

- Lightweight and compact base allows for:
 - Self-examination
 - Bench top presentation

Safety

- Contains latex

Cleaning & Care

- Skin surface is washable using soap and water

- 40040 Examination & Diagnostic Breast
- 40106 Breast Aspirant (50ml)
- Rigid two-part plastic base

Rectal Examination Trainer Mk 2

60120

Simulated Patient



Our model comprises a realistic representation of the buttocks, anus and rectum enabling the practice of diagnostic skills associated with rectal examination.

Skills

- Digital prostate and rectal examination
- Proctoscope insertion and use
- Professional-to-patient communication

Product Qualities

Anatomy

- Buttocks, anus and rectum
- 2 interchangeable perineums:
 - Normal for prostate examination
 - Pathology featuring polyp and carcinoma
- 5 interchangeable prostates:
 - Normal
 - Bilateral benign
 - Unilateral benign
 - Bilateral carcinoma
 - Unilateral carcinoma

Realism

- The prostate is hidden and cannot be seen by the trainee
- Realistic sphincter tone
- Palpable sacrum

Versatility

- Prostates can be easily and quickly changed
- Trainer can also be presented in 'semi-standing' position

Safety

- Latex free

Cleaning & Care

- Washable using soap and water

- 60122 Mk 2 Rectal Examination Perineum - Normal
- 60123 Mk 2 Rectal Examination Perineum - Pathology
- 60121 Mk 2 Rectal Examination Prostates (Set of 5)
- 00293 Tube of water-based Lubricant
- Lower torso
- Base
- Carry case

Clinical Male Pelvic Trainer (CMPT) Mk 2 - Standard & Advanced

60950 Standard



Our anatomically accurate trainer is an ideal platform for teaching and learning hands-on male pelvic examination and diagnosis.

The user-friendly design, combined with clear anatomic landmarks and a range of male conditions and pathologies creates a realistic training experience for students across all levels of healthcare education from undergraduate level upwards.

Developed in collaboration with:

- The Clinical Skills Resource Centre, University of Liverpool, UK
- Imperial College, London, UK
- Guys Hospital, London, UK
- Southmead Hospital, Bristol, UK
- University of Southampton, UK

Skills

- Correct examination procedure of male pelvis
- Examination and evaluation of:
 - Normal anatomy
 - Testicular abnormalities
 - Abdominal and pelvic pain
- Dry catheterisation
- Professional-to-patient communication



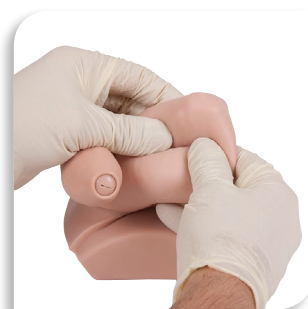
Anatomically accurate



Soft tissue inserts can be removed and replaced



Pelvis has realistic anatomy modelled from real bones



Realistic training experience

Product Qualities

Anatomy

– Abdomen, pelvis and genitalia

Anatomy of the groin with clear anatomical landmarks:

- Anterior Superior Iliac Spine (ASIS)
- Pubic symphysis and tubercles

Genitalia includes:

- Penis - both circumcised and non-circumcised
- Scrotum - containing testicles with epididymis and vas deferens

Pathologies (Advanced model only):

- Testicular tumour and penile cancer
- Epididymal cyst
- Varicocele
- Orchitis / Epididymo-orchitis
- Hydrocele
- Indirect inguinal hernia

Realism

– Soft tissue genitals and abdominal wall

Versatility

- Soft tissue inserts can be removed and replaced
- Can be used in 2 positions (standing and supine)

Safety

– Modules 5 & 7 contain latex

Cleaning & Care

– Skin surface is washable using soap and water

60951 Advanced

7 modules available



Images above are for information purposes & show a simplified representation of anatomy within the CMPT Modules

	60950	60951
• 60952 CMPT Module 1: Normal	✓	✓
• 60953 CMPT Module 2: Varicocele	x	✓
• 60954 CMPT Module 3: Tumours	x	✓
• 60955 CMPT Module 4: Epididymal Cysts	x	✓
• 60956 CMPT Module 5: Hydrocele	x	✓
• 60957 CMPT Module 6: Orchitis/Epididymo-orchitis	x	✓
• 60958 CMPT Module 7: Indirect Inguinal Hernia	x	✓
• 60959 CMPT Abdominal Insert	x	✓
• 60960 CMPT Pubic Bone	✓	✓(x2)
• 60961 CMPT Foreskins Pack (each pack contains 2 foreskins & 3 lubricant sachets)	✓	✓(x2)
• Lower torso	✓	✓
• Support base	✓	✓
• LED pen torch	x	✓
• Carry case	✓	✓(x2)

Patents granted

• US6336812 • EP099027 • DE69804793 • CA 2293585 • ZL98806331 • HK1023832 • 755575 Australia

Abdominal Examination Trainer

60000

Simulated Patient

An anatomically accurate adult male torso, used to teach and practise the palpation, auscultation and percussion elements of abdominal or gastrointestinal (GI) examination. Ideal for OSCE preparation and assessment.

With interchangeable organs of varying sizes, and an integral MP3 player providing realistic sounds, the trainer provides the ability to differentiate normal from abnormal pathology.

Product Anatomy & Contents

* CAD Imagery



Skills

- Familiarity with the abdominal regions and underlying anatomy
- Practice in abdominal palpation, auscultation and percussion
- Ability to differentiate normal from abnormal pathology
- Identification of ascites, specifically shifting dullness and fluid thrill
- Identification of gaseous distension and bowel obstruction
- Ballottement of kidneys
- Professional-to-patient communication



Product Qualities

Anatomy

- Torso featuring abdomen, pelvis and lower part of thorax
- Bony landmarks include ribs, costal margin, xiphisternum, pubic crest, and anterior superior iliac spines
- 3 Livers: slightly enlarged, enlarged with smooth edge and enlarged with irregular edge
- 2 Spleens: slightly enlarged and markedly enlarged
- 2 Enlarged Kidneys
- Distended Bladder
- 2 Aortas: normal and aneurysmal
- Set of 6 Abdominal Pathologies includes:
 - 4 Smooth masses: 2 sizes, each with hard and soft version
 - 2 Irregular hard masses
- Distension Set includes:
 - Ascites bag
 - Gaseous Distension bag, pump and foam insert
- Simplified representation of lower thoracic & lumbar spine

Realism

- Organs feel realistic on palpation and respond appropriately to percussion
- Lifelike quality of abdominal skin accommodates stretching for gaseous distension and ascites simulation
- Realistic ballottement of enlarged kidney

Versatility

- Abdominal skin is simple to remove, allowing quick and easy changeover of organs
- Suitable for both bench top use and hybrid use with Simulated Patient
- Model can be rolled onto side for examination of ascites and shifting dullness

Key Features

- Interchangeable organs and pathologies of varying sizes can be quickly and easily inserted into the abdomen
- Trainer or Simulated Patient can vary respiratory movement of liver and spleen by the turn of a wheel
- Integral amplifier and surface mounted MP3 player allow training in auscultation of normal and high-pitched or obstructed bowel sounds, renal and aortic bruits - in variable locations
- Volume of bowel sounds can be adjusted and MP3 player allows for additional sounds to be loaded
- Distension set allows for the following:
 - Realistic checking for ascites using percussion, shifting dullness or fluid thrill technique
 - Simulation of bowel obstruction on percussion and auscultation
- Pulse bulb allows simulation of normal and aneurysmal aortic pulse

Safety

- Latex free
- Weight of model is within male and female health and safety limits for lifting to chest height

Cleaning & Care

- Skin surface is washable using soap and water

- 60005 Abdominal Examination Base Unit
- 60006 Abdominal Examination Skin
- 60007 Abdominal Fluid Bag
- 60008 Abdominal Examination Organ Locator
- 60009 Abdominal Wall
- 60010 Abdominal Examination Livers (Set of 3)

- 60011 Abdominal Examination Spleens (Set of 2)
- 60012 Abdominal Examination Kidneys (x2)
- 60013 Abdominal Examination Bladder
- 60014 Abdominal Examination Pathologies (Set of 6)
- 60015 Abdominal Examination Aortas (Set of 2)
- 60016 Abdominal Examination - Distension Set
- Carry case

Take a look at our new videos

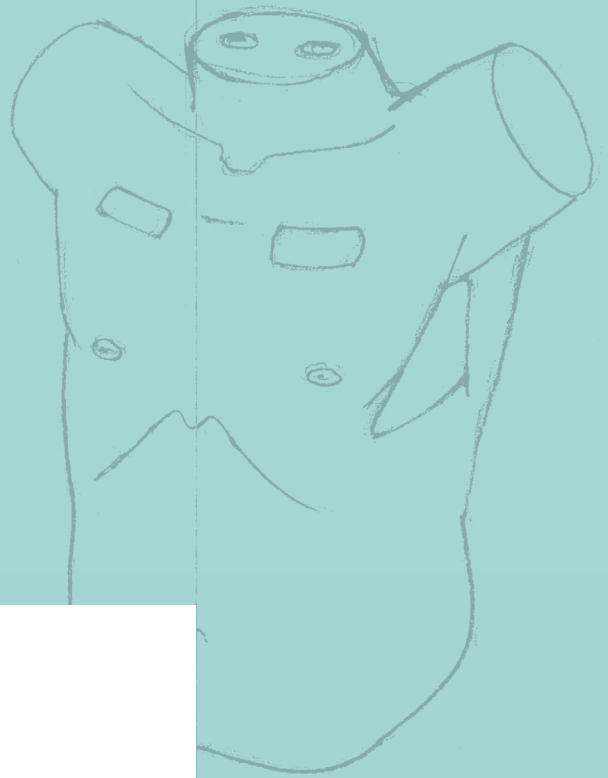


Visit the website or YouTube channel

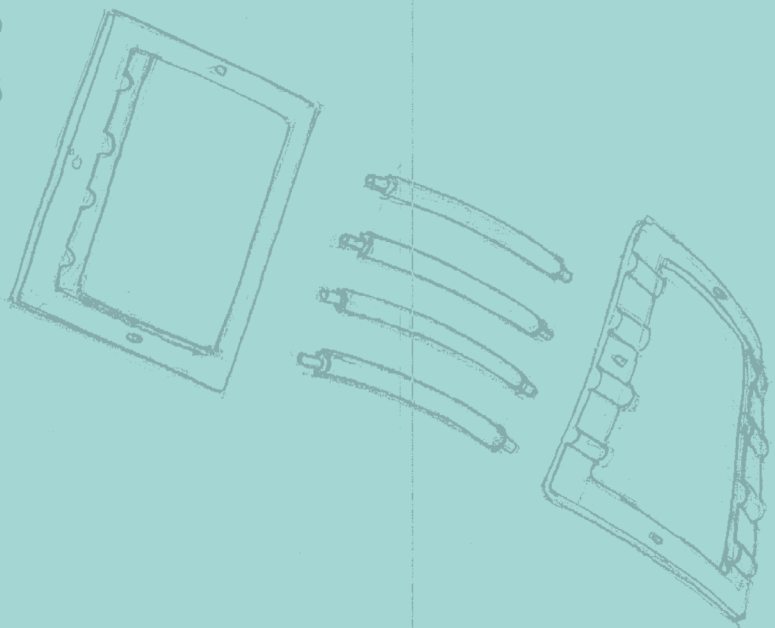
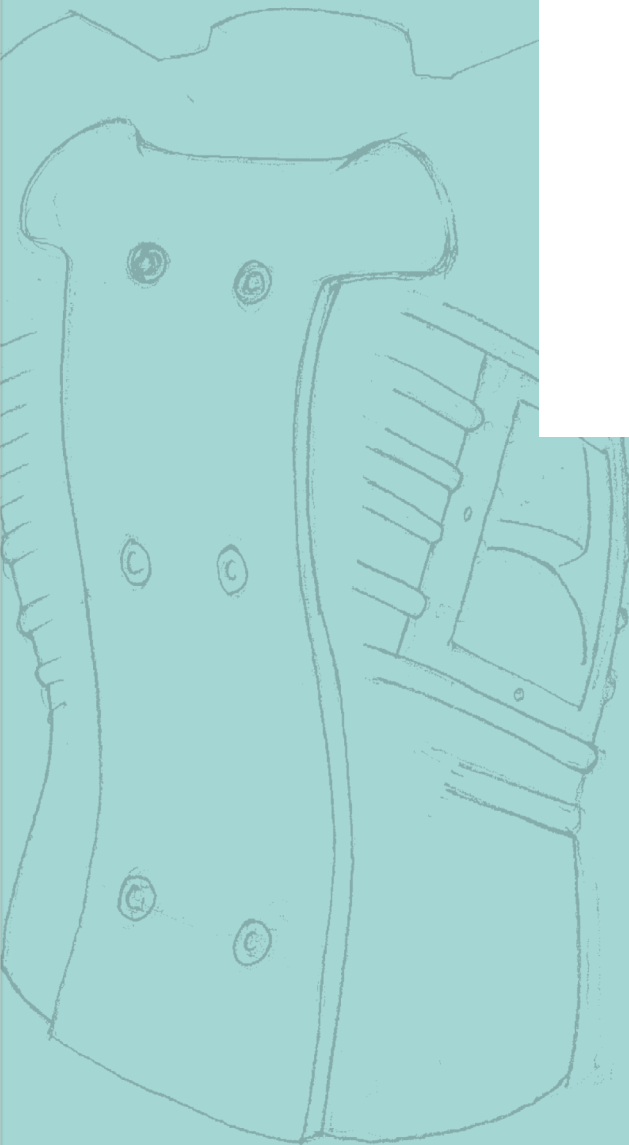
limbsandthings.com

youtube.com/limbsandthings

Subtitles in Spanish, French & German



*Procedural
Skills*



Advanced Catheterisation Trainer - Complete Set

60150 Complete Set

Simulated Patient

Our Advanced Catheterisation Trainer facilitates the teaching of urethral and supra-pubic catheterisation, as well as how to demonstrate self-catheterisation to patients (when using the optional Self Catheterisation Stand). It has interchangeable accurate male and female anatomy, and both sets of genitalia are realistically soft and pliable. The feel of the catheter passing along the urethra into the bladder corresponds closely to real life.



Optional Self Catheterisation Stand



Skills

- Correct handling of male and female anatomy
- Aseptic catheterisation technique
- Catheter placement: accepts catheters from 14-16 French (male) and 12-16 French (female)
- Fluid management
- Withdrawal of catheter
- Intermittent Self Catheterisation (ISC) when used with the optional Self Catheterisation Stand (**60167**)
- Suprapubic catheter insertion and catheter management using Suprapubic Bung

Product Qualities

Anatomy

- Male anatomy: realistic meatus, flaccid penis and replaceable foreskin
- Female anatomy: partable labia with realistic urethral meatus and vaginal opening

Realism

- Supple urethra and resistant sphincter providing realistic response

Key Features

- 1 litre fluid bag on stand provides pressurised fluid flow
- Syringe supplied with water-based lubricant to simulate proprietary local anaesthetic gel
- Non-drip valve
- Reusable double-sleeve catheter packaging is supplied for teaching aseptic catheter handling

Versatility

- Easily interchangeable male and female catheterisation units

Safety

- Product is latex free (catheters provided contain latex)

Cleaning & Care

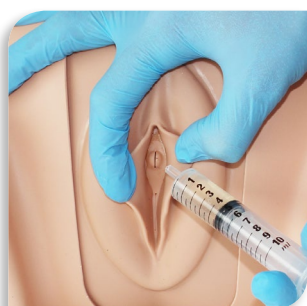
- Skin surface is washable using soap and water



Penis has replaceable foreskin



Aseptic catheterisation technique

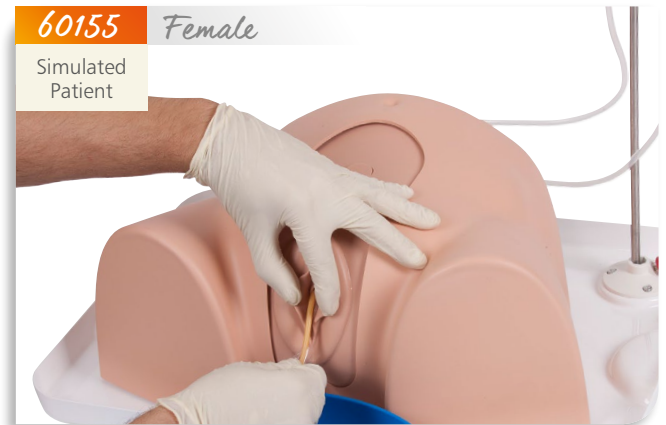


Accurate anatomical modelling



Easily interchangeable units

Advanced Catheterisation Trainers - Male & Female



The Advanced Male and Female Catheterisation Trainers are available separately. Both are supplied with a suprapubic site and bung.

Basic Catheterisation Trainers - Value Set



A cost effective Value Set containing basic versions of each of the Male and Female Catheterisation Trainers. These do not contain the suprapubic bungs.

Suprapubic Catheterisation Management Bung



Set of 2 bungs, to be used with Limbs & Things Catheterisation Trainer Range. This Pre-Ported Suprapubic Bung allows for the management of catheters after surgical procedure has taken place.

	60150	60151	60155	60166
• 60152 Male Catheterisation Unit	✓	✓	✗	✓
• 60154 Catheterisation Foreskin (x3)	✓	✓	✗	✓
• 60156 Female Catheterisation Unit	✓	✗	✓	✓
• 60158 Suprapubic bung (x2)	✓	✓	✓	✗
• 60161 Standard bung	✓ (x2)	✓	✓	✓ (x2)
• 60159 Male Catheterisation Sphincter Kit	✓	✓	✗	✓
• 60162 Female Catheterisation Sphincter Kit	✓	✗	✓	✓
• 60160 Aseptic Catheterisation Sleeves (x2)	✓	✓	✓	✓ (x2)
• 50183 Mock LA Gel with Syringe	✓	✓	✓	✓ (x2)
• 50185 Antifungal Agent (Milton Sterilising Fluid)	✓	✓	✓	✓ (x2)
• Drip tray with bag stand	✓	✓	✓	✓ (x2)
• 1 Litre fluid bag & plastic kidney dish	✓	✓	✓	✓ (x2)
• 14 French foley catheter (male)	✓	✓	✗	✓
• 12 French foley catheter (female)	✓	✗	✓	✓
• Pelvic shell	✓	✓	✓	✓ (x2)
• 2 Litre jug	✓	✓	✓	✓ (x2)
• Carry case	✓	✓	✓	✓ (x2)

Chest Drain & Needle Decompression Trainer

60230



Skills

- Needle decompression of tension pneumothorax
- Open, or cut-down chest drain insertion: recognition of correct position, surgical incision, blunt dissection through chest wall, perforation of pleura and finger sweep
- Suture of tube to chest wall
- Ultrasound-guided chest drain insertion (Seldinger-type), including insertion of needle under direct vision and ultrasonic recognition of chest structures
- Management of pleural effusion

Product Qualities

Anatomy

- Representation of adult male thorax with arms raised
- Bony and soft tissue landmarks: manubriosternal joint, clavicles, ribs, pectoralis major and latissimus dorsi
- Internal ultrasound anatomy: diaphragmatic structures and collapsed lung

Realism

- Can give the impression of breathing under ultrasound when using the advanced pad
- Needle decompression air reservoirs provide realistic release of air on insertion of needle

Key Features

- Reservoirs can be filled with fluid or mock blood to represent pleural effusion
- Bilateral chest drain and needle decompression pads

Versatility

- Suitable for supine, sitting or leaning forwards positions
- Works with thoracic seals when using the standard pad
- Affordable replaceable pads

Safety

- Latex free

Our Chest Drain and Needle Decompression Trainer has been designed to meet the specific requirements of healthcare professionals training in surgical or guidewire-assisted thoracostomy and thoracentesis.

This product allows for a variety of chest drain insertion techniques to be performed including ultrasound-guided techniques.



Pad feature comparison

	Advanced	Standard
• Ultrasoundable	✓	✗
• Use with liquids	✓	✗
• Effusion	✓	✗
• Haemothorax simulation	✓	✗
• Pleural layer	✓	✓
• Blunt dissection	✓	✓
• Seldinger technique	✓	✗
• Can be sutured	✓	✓
• Needle insertion	✓	✓
• Guidewire insertion	✓	✓
• Dilator insertion	✓	✓
• Drain tube insertion	✓	✓
• Use with adhesive dressings	✓	✓
• Shows respiratory swing	✓	✗
• Latex free	✓	✓



Needle only needle decompression



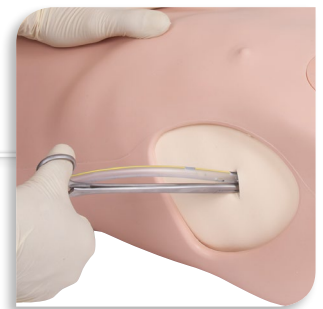
Needle, syringe & saline solution needle decompression



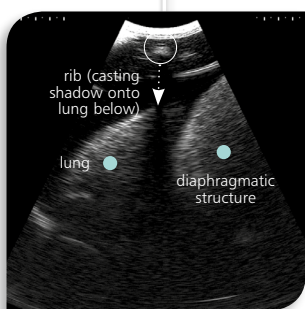
Reservoirs can be filled with fluid to represent pleural effusion



Ultrasound guided needle insertion (Seldinger type)



Blunt dissection with drain tube insertion



Recognition of pleural effusion & ultrasonic landmarks: chest wall, lung & diaphragmatic structure



Suitable for supine, sitting or leaning forwards positions



- 60231 Needle Decompression Pads (x2)
- 60232 Advanced Chest Drain Pads (x2)
- 60234 Standard Chest Drain Pads (x2)
- 60240 Chest Drain Ribs (x12)
- 60235 Chest Drain Rib Frame (Left)

- 60237 Chest Drain Rib Frame (Right)
- 60238 Chest Drain Lung
- 60239 Chest Drain Diaphragm
- Torso
- Carry case

Standard Venepuncture Arm

00330

00331

Simulated Patient



Standard Venepuncture Arm veins



Bag & Stand Advanced Venepuncture Arm

00440

00441

Simulated Patient



Advanced Venepuncture Arm veins

The Standard Venepuncture Arm provides the ideal platform for practising the skills related to venepuncture and IV cannulation.

The bag and stand mock blood supply is perfect for a clinical skills training environment where large numbers of trainees are practising on a regular basis, or for self-directed learning time in a skills laboratory. Little technical knowledge is required for setup and maintenance.

The Bag & Stand Advanced Venepuncture Arm contains a more complex vein structure in combination with the bag, stand and mock blood supply.

Venepuncture Arms

(Common features for all Venepuncture Arms)

Skills

- Venepuncture
- IV Cannulation
- IV Infusion
- Professional-to-patient communication



Vacuum blood collection systems to be used



Skin to be stretched to 'anchor' veins for easier cannula insertion

Product Qualities

Anatomy

- Soft, flexible skin
- Underlying palpable veins:
 - All models: cephalic, basilic and dorsal metacarpal
 - Advanced model only: median cubital

Key Features

- Realistic blood flashback
- Arm allows for digital pressure to stem blood flow
- Infusion tube allows for volume IV fluids to be administered

Versatility

- Skin is durable
- Veins last for up to 500 insertions of 21g needle
- Blood has been reformulated to improve leak resistance of veins (concentrated liquid to save you money and space)
- Can be used with vacuum blood collection systems, needle and syringe and IV cannulas
- Can be used for hybrid simulation and for professional-to-patient communication when using the optional Venepuncture Arm Harness

Safety

- Veins contain latex

Cleaning & Care

- Veins are easy to replace
- Easy to clean, service and maintain

Advanced Venepuncture Arm

00290

00298

Simulated Patient



NEW
SKIN
COLOUR



Advanced Venepuncture Arm veins

The Advanced Venepuncture Arm features a complex vein system, which is connected to a closed blood supply, for easy adjustment of pressure.

	Standard	Bag & Stand Adv	Advanced
--	----------	-----------------	----------

- 00292 Advanced Venepuncture Arm Veins
- 00295 Advanced Venepuncture Vein Module
- 00333 Standard Venepuncture Arm Veins
- 00334 Standard Venepuncture Vein Module
- 00335 Venepuncture Arm Infusion Tube
- 00336 Bag & Stand Venepuncture Arm Mock Blood Supply
- 00337 Pressurised Venepuncture Arm Mock Blood Supply
- 00020 Concentrated Venous Blood - Starter Pack
- 00302 Venepuncture Arm Rest
- 00303 Refill Bottle
- Venepuncture arm skin
- Water-based lubricant pack (x3)
- Arm shell

x	✓	✓
x	✓	✓
✓	x	x
✓	x	x
✓	✓	✓
✓	✓	x
x	x	✓
✓	✓	✓
✓	✓	✓
x	x	✓
✓	✓	✓
✓	✓	✓
✓	✓	✓

Optional Extras & Consumables

(Available for all Venepuncture Arms)

- 00291 Arm Skin - Light
- 00299 Arm Skin - Brown
- 00300 Venepuncture Arm Harness
- 00301 Venepuncture Arm Carry Case



ACF Pad - Venepuncture



This soft tissue strap-on pad can be used to train in venepuncture and represents the antecubital fossa of the right arm.

Skills

- Professional-to-patient communication
- Recognition of the vein pattern through palpation
- Insertion of a needle and cannula
- Management of blood flow

Three Vein Pad - Venepuncture



This soft tissue strap-on pad features 3 straight veins, one of which is paediatric size.

Skills

- Professional-to-patient communication
- Insertion of a needle
- Insertion of cannula
- Management of blood flow

Product Qualities

Key Features

- Ideal for professional-to-patient communication and scenario based training using Simulated Patient
- Strap onto the antecubital fossa of the arm
- Veins are: self-sealing for repeated use, re-chargeable via a one-way valve, supplied with mock blood under pressure, and replaceable

Versatility

- The pad can be connected to the Mock Blood Giving Set (60651) to simulate blood flow. Only use Mock Blood - Venous (250ml) (00223)

Safety

- Tough backing plate to prevent needlestick injuries
- Epidermis and veins contain latex

Cleaning & Care

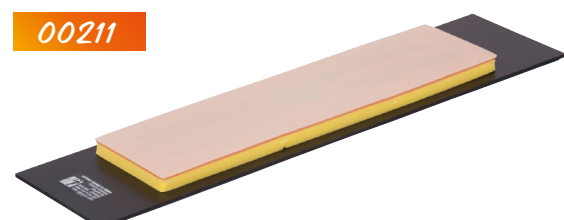
- Replaceable epidermis
- Washable using soap and water

- 00180 Vein for ACF Pad
- 00170 Epidermis for ACF Pad
- Pad base with strap

- 00213 Vein for Three Vein Pad
- 00200 Epidermis for Three Vein Pad
- Pad base with strap

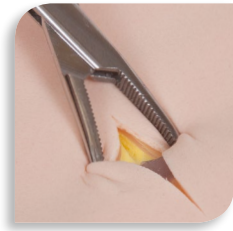
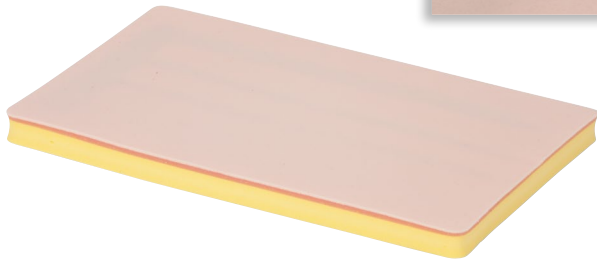
Extended ACF Pad - Venepuncture

This soft tissue pad is supplied on a base for bench top training in venepuncture and insertion of cannulae. It represents the antecubital fossa of the right arm.



Cutdown Pad

00280



A multi-layered pad containing filled veins for practising venous cutdown procedure.

Skills

- Palpation to locate vein position
- Incising tissue layers
- Inserting a cannula
- Vein injection both distally and proximally
- Tying off veins

Product Qualities

Anatomy

- Layers simulate the epidermis and subdermal layers
- 3 straight veins (each 150mm long) filled with mock blood

Key Features

- The pad can be connected to the Mock Blood Giving Set (60651) to simulate blood flow. Only use Mock Blood - Venous (250ml) (00223)

Versatility

- The veins can be used by multiple trainees if tied off after each use

Safety

- Skin and veins contain latex

• 00280 Cutdown Pad

Mock Blood - Venous

00223

250ml of synthetic solution made to the correct colour and viscosity of venous blood.



Mock Blood Giving Set

60651



A 1 litre blood bag with luer lock connector tube and stand.

This product can be used with Limbs & Things products requiring a mock blood supply.

Product Qualities

Key Features

- Quick and easy to assemble
- Easy storage - collapsible stand
- Bag holds up to 500ml
- Fluid flow shut-off clamp

Versatility

- This product can be used with Limbs & Things products requiring a mock blood supply including:
 - Cutdown Pad (00280)
 - ACF Pad (00140) and Extended ACF Pad (00211)
 - Three Vein Pad (00161)
 - Arterial Procedures Kit (60600)
 - Vermiform Appendix (50122, 50123 and 50124)
 - Gall Bladders (50127, 50128, 50129 and 50132)
 - Abdominal Aortic Aneurysm (AAA) Trainer (60610)
 - Femoro Peroneal Anastomosis (FA) Trainer (60640)
 - Femoral Popliteal Bypass (FPB) Trainer (60630)

• 60652 Mock Blood Bag

• Luer lock tube adapter

• Metal stand with base

Mock Blood - Arterial

60653

250ml of synthetic solution made to the correct colour and viscosity of arterial blood.



Injection Trainer

00310

Simulated Patient



Our soft tissue injection pad is designed for practising intradermal, subcutaneous and intramuscular tissue injection techniques.

The Injection Trainer has multiple tissue layers representing the epidermis, dermis, fat and muscle layer, and can easily attach to an arm or thigh to help teach professional-to-patient communication.

Skills

- Subcutaneous injection
- Intradermal and intramuscular injection
- Management of tissue
- Professional-to-patient communication

Product Qualities

Anatomy

- Epidermis, dermis, fat and muscle

Realism

- Tissues are soft and warm to the touch

Key Features

- Epidermis layer peels back to quickly release subcuticular liquid

Versatility

- Strap for hybrid simulation

Safety

- Latex free

Cleaning & Care

- Durable replaceable epidermis

- 00311 Skin Pad & Muscle Block
- 00320 Epidermis for Injection Trainer (x2)
- Strap-on base plate
- Soft tissue tray with liner

Ultrasound Vascular Access Trainer

60530



An echolucent and contoured slab with representation of the jugular vein for teaching needle insertion under ultrasound.

Skills

- Use of ultrasound technology
- Handling ultrasound transducers
- Insertion of needles under ultrasound guidance
- Handling and management of guidelines and catheters under ultrasound
- Recognition of vessels using ultrasound

Product Qualities

Realism

- Echolucent material provides realistic ultrasound image

Key Features

- Vein is self-sealing for repeated use and rechargeable with water via a one-way valve
- Designed to be used on the bench top

Versatility

- Fluid volume and pressure can be changed in the vessel to represent variability in patient circulation, providing various levels of difficulty for needle insertion

Safety

- Veins contain latex

- 60531 Ultrasound Vascular Access Slab
- Base
- 10ml Syringe

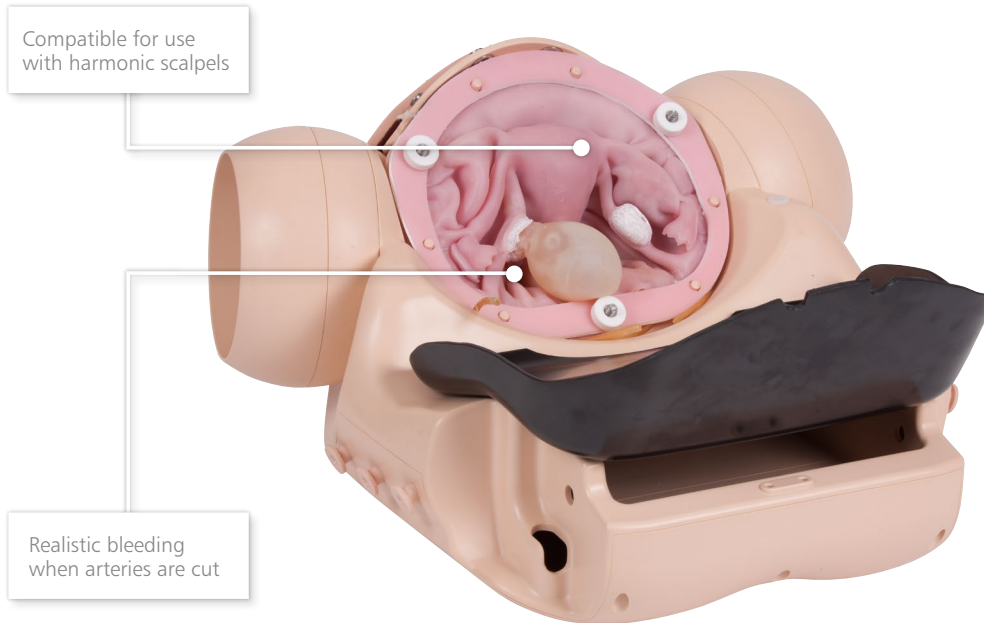


*Specialist
Skills*

Surgical Female Pelvic Trainer (SFPT) Mk 2

60251

The Surgical Female Pelvic Trainer (SFPT) is a simulator for training in a wide range of laparoscopic gynaecological surgical techniques and procedures. The uterus component can be easily removed and replaced after use.



Abdominal Skin with realistic tissue properties for trochar insertion



Working with gynaecology instruments

Product Qualities

Anatomy

- Includes:
 - Uterus
 - Cervix
 - Bladder
 - Ovaries
 - Ureters
 - Ovarian artery
 - Dunn's pouch
 - Ovarian cyst
 - Fibroid
 - Cardinal ligament
 - Abdominal skin with realistic tissue properties for trochar insertion
 - Pelvic floor with sympathetic features
 - Vagina
 - External introitus
 - Fallopian tube
 - Broad ligament
 - Uterine artery
 - Pouch of Douglas
 - Bowel and sigmoid
 - Ectopic pregnancy
 - Uterosacral ligament

Realism

- Insufflation of abdomen is represented

Key Features

- Provides practice and role playing for gynaecological perioperative teams
- Includes a realistic vaginal canal and cervix for inspection, in which a uterine manipulator can be used
- Realistic bleeding when arteries are cut

Versatility

- Compatible for use with harmonic scalpels

Safety

- Capsule in uterus contains latex

Skills

- All skills relevant to performing the following procedures:
 - Salpingectomy
 - Myomectomy
 - Hysterectomy
 - Salpingostomy
 - Cystectomy
 - Oophorectomy
- Dissection down to and location of ureters
- Insertion and use of uterine manipulator
- Working with various gynaecology instruments
- Identification of anatomical landmarks

- SFPT Mk 2 Abdomen
- 60252 SFPT Mk 2 Surgical Uterus
- 60253 SFPT Mk 2 Abdominal Skin Pad
- 60254 SFPT Mk 2 Perineum
- 60255 SFPT Mk 2 Bowel
- 00020 Venous Blood Starter Kit
- SFPT Mock Blood Kit (includes reservoir and pump)
- Blunt dispensing needle and syringe
- Bed securing strap

Consumables

- 60256 SFPT Uterus (x5)
- 60257 SFPT Uterus (x10)

Patents granted

- US6336812 • EP099027 • DE69804793 • CA 2293585
- ZL98806331 • HK1023832 • 755575 Australia

PROMPT Flex Range

PROMPT Flex Range has become an integral part of many birthing training courses around the world, suitable for all levels of teaching, learning and skill maintenance.

Launched in 2015 the Standard and Advanced units offer closer to life anatomy combined with flexibility to train on routine and a number of difficult birthing management scenarios.

Additional modules which fit either the Standard or the Advanced units allow your training to be tailored to your training needs and include PPH, C-Section and Cervical Dilatation & Effacement.

PROMPT Flex - Standard

80100

Simulated Patient

With improved anatomy, durability and functionality the new PROMPT Flex Standard has a modular design allowing for numerous training scenarios.

Used either for stand-alone training or integrated into hybrid simulation, it is an ideal training solution for all skills relating to routine and difficult deliveries.



PROMPT Flex - Advanced

80106

Simulated Patient

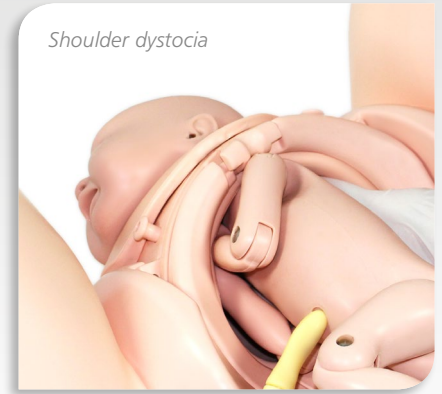
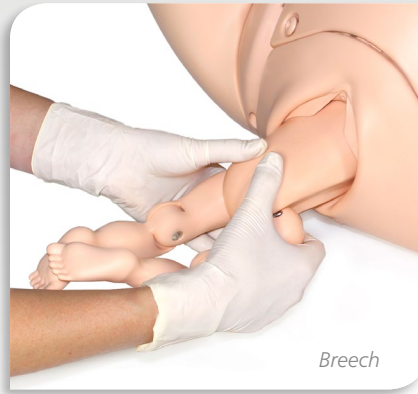


In addition to the functionality of the Standard, the Advanced unit includes both Bluetooth Force Monitoring and Scenario Training.

Traction applied to the baby's head can be recorded during a shoulder dystocia drill, with the force applied visually represented.

The multiple scenario training function allows for monitoring and recording of actions taken during birthing including interventions made and time to deliver the baby. Downloadable PDFs create a record of the trainee's actions and allow for factual debriefing post the scenario.

Download simulator software at limbsandthings.com



Product Qualities

Anatomy

- Birth canal and cervix
- Ischial spines and pubic bone
- Gynaecoid pelvis
- Articulating thighs
- IM injecting
- Fully articulated baby with detachable umbilical cord and placenta
- Baby includes clavicles, fontanelles and flexible head

Realism

- Suitable for use with Simulated Patient

Key Features

- Improved and more realistic pelvic floor
- Articulating thighs for McRobert's procedure
- Stretchable perineum
- Soft flexible birthing canal
- Additional modules to extend learning:
 - PPH management
 - C-section
 - Cervical dilation and effacement
- Optional lower legs for extended realism
- Optional wireless force monitoring for training in shoulder dystocia management

Safety

- Latex free

Cleaning & Care

- Skin is washable using soap and water

Skills comparison

	80100	80106
• Communication & team work skills (SP)	✓	✓
• Normal	✓	✓
• Breech	✓	✓
• Shoulder dystocia management	✓	✓
• Instrumental (forceps & vacuum devices)	✓	✓
• Delivery of placenta	✓	✓
• Cord prolapse	✓	✓
• Urinary catheter placement	✓	✓
• IM injection pads	✓	✓
• Force feedback of baby's head	✗	✓
• Recording of scenarios & force monitoring	✗	✓

	80100	80106
• 80120 Birthing Mother (+ Upper Legs)	✓	✓
• 80121 Standard Baby	✓	✗
• 80122 Wireless Force Monitoring Baby	✗	✓
• 80123 Placenta	✓	✓
• 80124 Abdomen for PROMPT Flex	✓	✓
• 80125 Perineum and Birth Canal	✓	✓
• 80130 Bed Straps	✓	✓
• Lubricant	✓	✓
• Carry case	✓	✓

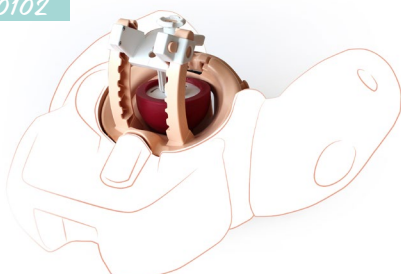
Optional Extras & Consumables

- 80110 PROMPT Flex - Lower Limbs
- 00020 Concentrated Venous Blood - Starter Pack (x2)
- 10193 PROMPT Birthing Lubricant (250ml)

Additional Modules

Cervical Dilatation & Effacement

80102



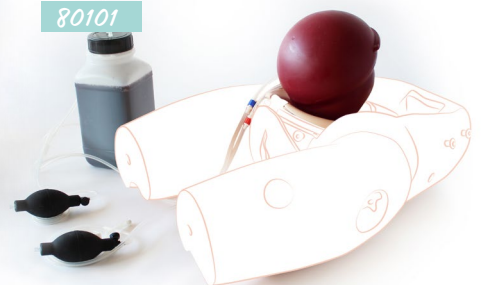
Caesarean Section

80103



Post Partum Haemorrhage

80101



PROMPT Flex - Cervical Dilatation & Effacement Module

80102

Simulated Patient

This versatile module is an optional add-on to the PROMPT Flex Standard or Advanced. It allows for training in assessment of both the latent and active first stages of labour.



Skills

- Assessment and Bishop's scoring of:
 - Cervical dilation (1-10cm)
 - Cervical effacement (0-100%)
 - Cervical ripeness/consistency (soft, medium, hard)
 - Cervical position (anterior, mid, posterior)
 - Foetal station (-3 to +3)
- Assessment of and artificial rupture of membranes
- Assessment of presenting part - flexed, deflexed, brow, face, breech, caput and moulding and caput formation

Product Qualities

Anatomy

- Realistic representation of cervix, including anterior lip, and presenting parts in soft birth canal, with palpable ischial spines

Key Features

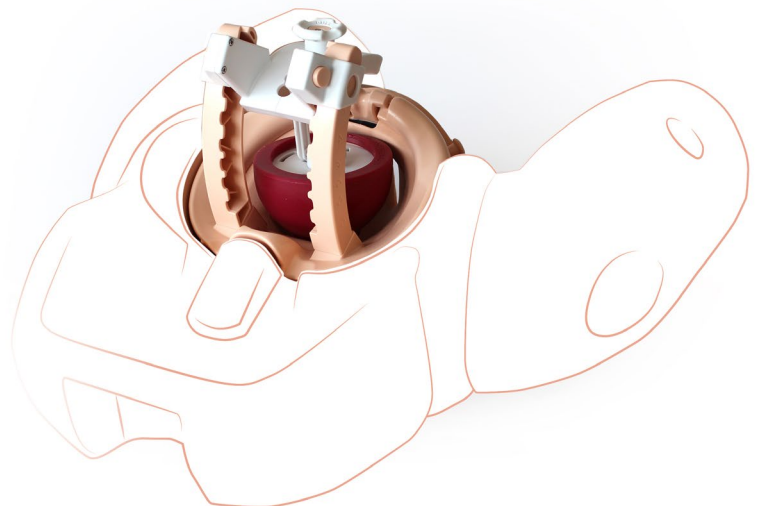
- Inserts to represent early labour cervixes - effacement, dilation and ripeness in line with Bishop's scoring
- Positioning mechanism allows adjustment of station, dilation and tilt without removal from the simulator
- Dynamic positioning mechanism allows adjustment of dilation in active labour
- Markers allow tutor to read positioning in situ
- Numerous presenting part inserts including flexed, deflexed, brow, face, breech, caput and moulding

Versatility

- Presenting parts and cervix can be set up outside the model for demonstration, then placed inside for examination

Safety

- Latex free



- 80138 Perineum
- 80139 Pelvic Ring
- 80140 Static Rig
- 80141 Dynamic Rig
- 80142 Set of 7 Latent Labour Cervixes
- 80143 Dynamic Cervix
- 80144 Set of 5 Presenting Parts
- 80145 Set of 2 Difficult Labour Heads
- 80146 Amniotic Membrane Set
- 80162 Set of 3 Caputs

PROMPT Flex - Caesarean Section Module

80103

Simulated Patient

Caesarean Section Surgical Pad



Skills

- Abdominal and uterine wall opening and closure
- Cephalic and breech delivery
- C-section at full dilation:
 - Head disimpaction using vaginal push methods
 - Use of balloon disimpacting device
 - Reverse breech extraction
- Transverse lie
- Instrument assisted C-section delivery
- Delivery of the placenta
- Teamwork and human factors training in emergency C-section

Product Qualities

Anatomy

- Surgical pad has following anatomical layers: skin, fat, superficial epigastric vessels, rectus sheath, rectus muscle, parietal peritoneum, visceral peritoneum, bladder, muscular uterine wall, amniotic membrane

Realism

- Abdominal skin has realistic appearance and soft feel of at-term abdomen
- Realistic feel of uterus interior during delivery
- Head presents at realistic level once incision is made

Key Features

- Uterus holds baby firmly in position for normal and transverse lies, breech and cephalic presentations
- Uterus support positions baby and directs it towards the pelvis/abdominal incision when fundal pressure is applied
- Pre-incised skin option allows easy repeat delivery practice
- Surgical pad allows realistic dissection and closure and is reversible to allow 2 uses
- Single/double in situ uterine wall closure
- Suturing of rectus sheath, fat and subcuticular or cutaneous skin closure
- Accommodates retraction using metal, plastic or rubber retractors

Versatility

- Optional insert to allow presentation of head just below ischial spines for Caesarean section at full dilation

Safety

- Latex free

This module allows training in performing a transverse incision, (both Pfannenstiel and Joel-Cohen), allowing for the layers to be sutured as well as in-situ repair of the uterine wall. Delivering a difficult baby with an impacted head or a transverse lie can also be practised.

Surgical Skin



Pre-incised Delivery Only Skin



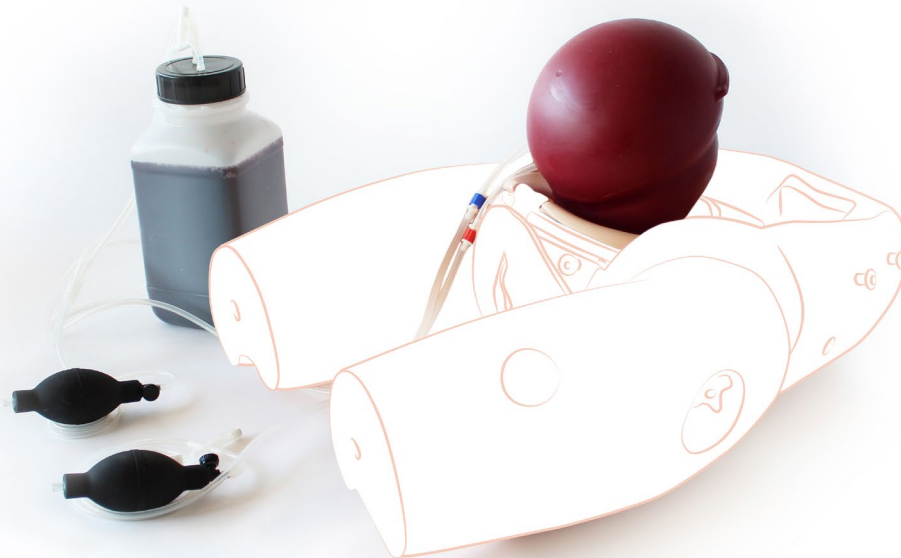
- 80104 Caesarean Section Surgical Pad (x2)
- 80138 Perineum
- 80170 Uterus for Caesarean Section Module
- 80171 Pre-incised Delivery Only Skin
- 80172 Surgical Skin
- 80173 Cervix for Caesarean Section Module
- 80175 Foam Uterus Support
- 80176 Full Dilatation Pelvic Insert

PROMPT Flex - PPH Module

80101

Allowing training in the management of post-partum bleeding, it offers a realistic simulation of an atonic and contracting uterus.

This module is an optional add-on for PROMPT Flex Standard or Advanced.



Skills

- Management of post-partum bleeding:
 - Fundal massage
 - Bi-manual compression
 - Haemostatic balloon insertion and management
- Communication skills with mother when used with Simulated Patient
- Intramuscular injection
- Estimating blood loss

Product Qualities

Realism

- Atonic uterus can simulate contraction on fundal massage

Key Features

- Blood loss of up to 2 litres can be simulated
- Air bulbs are used to stimulate blood flow and control atonic state of the uterus

Versatility

- Can be quickly and easily fitted into the birthing mother to allow simulation of situations where bleeding occurs directly after delivery



- 80127 PROMPT Flex PPH Uterus Assembly
- 00020 Concentrated Venous Blood - Starter Pack (x2)
- PROMPT Flex PPH blood container

PROMPT Flex - Lower Limbs

80110

A pair of lower legs with knee joint interface for extended realism when running a shoulder dystocia drill or when using a Simulated Patient.

To be used with PROMPT Flex Standard or Advanced.



Keele & Staffs Episiotomy Repair Trainer

60450



A 3 stage training system for teaching episiotomy, perineal suturing techniques, and repair of episiotomy and second degree tears.

Developed in collaboration with:

- Professor Christine Kettle, Professor of Women's Health, University Hospital of North Staffordshire and Staffordshire University (UK).
- Professor Khaled Ismail, Senior Lecturer and Consultant Obstetrician and Gynaecologist, Keele Medical School and University Hospital of North Staffordshire (UK).



Stage 1 Episiotomy

A simplified model for teaching safe methods of episiotomy.

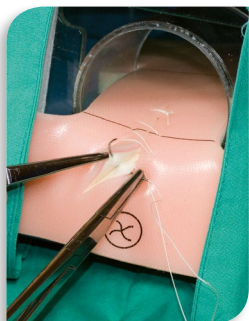
- Identification of fontanelles
- Handling of a stretched perineum
- Reducing the risk of damaging the baby or mother
- Infiltration of perineum prior to episiotomy
- Performance of medio-lateral (or midline) episiotomy
- Use of instruments

Realism

- Realistic representation of tissue to represent a stretched perineum

Key Features

- Baby head provides a realistic look and feel providing landmarks and appropriate tactile response when inserting fingers to guard the baby's head



Stage 2 Perineal Repair Techniques

The Episiotomy and Perineal Repair Pad prompts trainees to learn to suture on 2 planes, one of which has the spatial challenges which exist when suturing within the vagina. Comprises epidermis, dermal and subdermal layer.

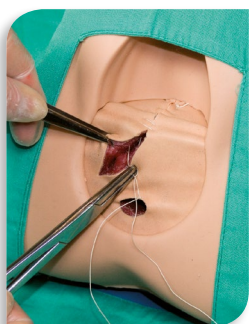
- Suturing in 2 planes: inside vagina and on perineum
- Practice of suture techniques: continuous, subcuticular, knot tying

Realism

- Soft skin with a similar drag and strength to human skin
- Epidermis and dermis have a realistic retention of suture

Key Features

- Representation of the anus printed on pad
- Representation of the hymenal remnant printed on pad to assist in assessment of suturing techniques



Stage 3 Perineal Repair Procedures

For the practice of episiotomy and second degree tear repair.

- Tissue layer recognition and handling
- Vaginal mucosal suturing
- Deep muscle suturing
- Subcuticular suturing
- Identification and management of perineal tears
- Enables digital rectal examination before and after repair

Anatomy

- Perineal skin
- Superficial muscle structure and relevant layer for suturing

Key Features

- Cost effective: all layers can be sutured repeatedly
- Each Procedure Block presents 3 repair sites (left lateral is pre-incised, with both midline and right lateral uncut)

- 60451 Episiotomy Incision Pad (x6)
- 60452 Episiotomy & Perineal Repair Pad (x2)
- 60453 Episiotomy & Perineal Repair Block
- 60454 Perineal Repair Perineum
- 60455 Perineal Repair Techniques Jig
- 60456 Perineal Repair Base & Clip
- 60457 Keele & Staffs Baby Head
- Bench top clamps (x2)
- Carry case



Bundles

The products in this range have been specifically designed to meet the core training needs and essential skills required in **undergraduate medicine**.

ABDOMINAL EXAMINATION TRAINER

Page 12



CLINICAL FEMALE PELVIC TRAINER

Pages 6-7



CLINICAL MALE PELVIC TRAINER

Pages 10-11



RECTAL EXAMINATION TRAINER

Page 9



BREAST EXAMINATION TRAINER

Page 8



PROMPT FLEX ADVANCED

Page 27



PROMPT Flex Range has become an integral part of many birthing training courses around the world, suitable for all levels of teaching, learning and skill maintenance.

MODULES

Pages 29-31



LOWER LEGS

Page 31



KEELE & STAFFS EPISIOTOMY REPAIR TRAINER

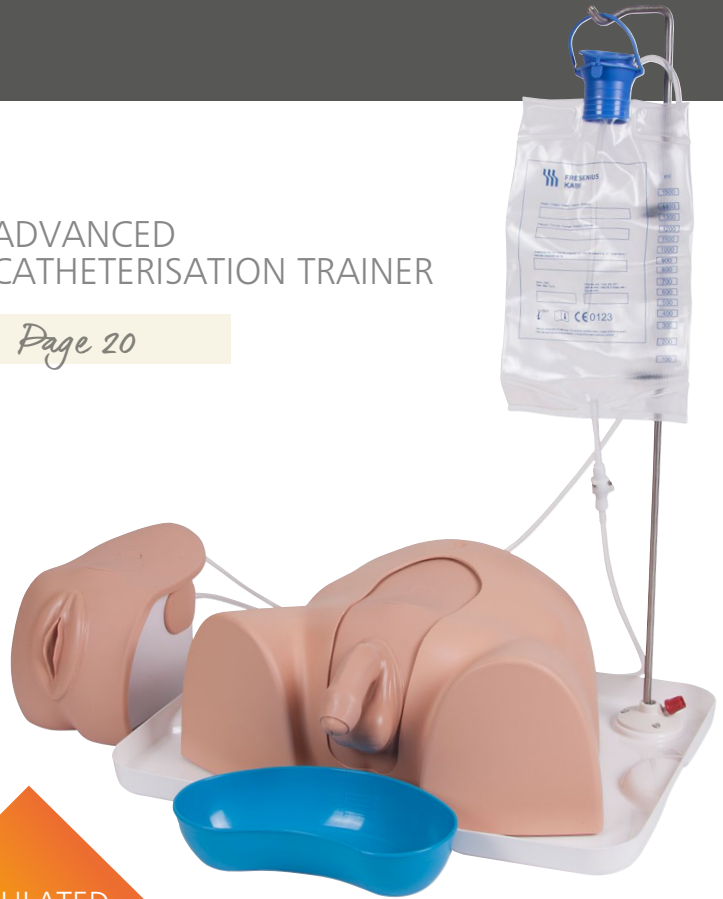
Page 32



At the very heart of the healthcare system is **nursing** and this range of products reflects a number of the core simulation training needs required for undergraduate nursing today.

ADVANCED CATHETERISATION TRAINER

Page 20



SIMULATED PATIENT

ADVANCED VENEPUNCTURE ARM

Pages 20-21



INJECTION TRAINER

Pages 24



ACF PAD - VENEPUNCTURE

Page 22



THREE VEIN PAD - VENEPUNCTURE

Page 23





Laerdal

helping save lives

Limbs & Things products distributed by:

LAERDAL GERMANY

Laerdal Medical GmbH

+49 89 86 49 54-0
info@laerdal.de

LAERDAL SPAIN

Laerdal España

902 29 11 10
laerdal.spain@laerdal.no

LAERDAL POLAND

Laerdal Medical Poland

32 493 70 20
lmp@laerdal.com

LAERDAL FRANCE

Laerdal Médical France

04 72 52 02 52
info@laerdal.fr

LAERDAL ITALY

Laerdal Italia Srl

051-355587
laerdal.italy@laerdal.com

LAERDAL BELGIUM

Laerdal Benelux nv/sa

+32 (0)2 253 36 96
info@laerdal.be

limbsandthings.com