

# How to Update SimPad and Link Box Software

Version 1.0.5 or higher to version 5.0.5

*For this version it is important that both the Sim Pad and the Link Box are updated. Updating only one will create errors. The same update file is used for both SimPad and Link Box.*

## **Important Note:**

*When using SimPad SW 5.0.5 the Patient Monitor needs to be updated in addition using the latest Patient Monitor Unified SW*

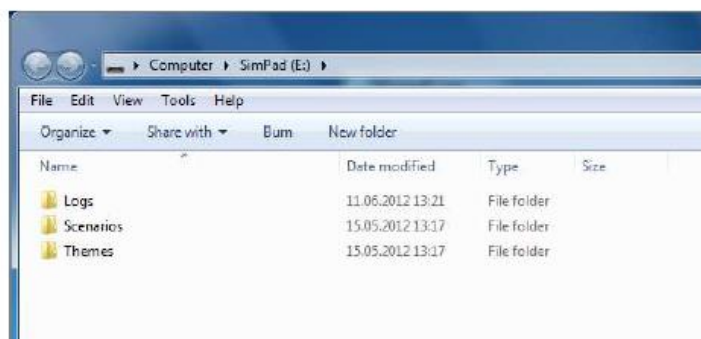
This update will not affect any Themes or Scenarios or settings on your unit.

Download SimPad software update from [www.laerdal.com/SimPad#/Downloads](http://www.laerdal.com/SimPad#/Downloads)

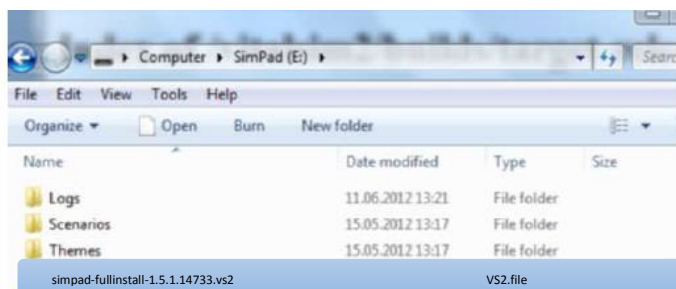
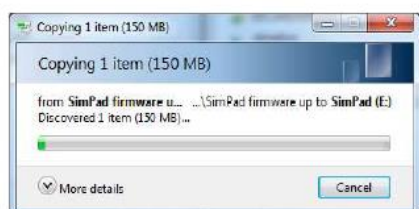
## **SIMPAD**

*Make sure that the SimPad has a battery capacity of at least 70% or is connected to the DC adapter.*

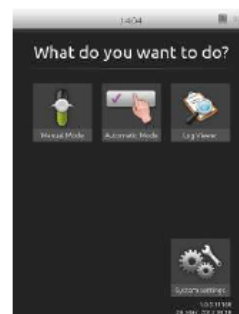
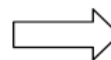
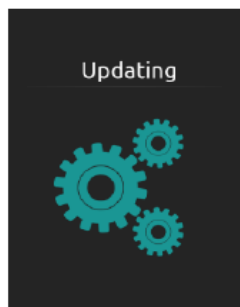
1. Connect the SimPad to the computer with the USB Cable. SimPad will appear as a disk drive on your computer.



2. Copy the file ***simpad-upgrade-5.0.5.20932.vs2*** to the root of the SimPad drive. Make sure that the transfer is finished before you disconnect SimPad from the computer.



3. Disconnect the USB Cable. The SimPad will now start updating and show “Updating” in the display and blink with the LED. This update takes less than 10 minutes.



4. Wait until the Main screen re-appears. Your update is now finished.

## LINK BOX

*Always have the Link Box connected to a DC adapter when performing updates.*

1. Turn the Link Box on, wait for the green indicator lights to be steady green. The Link Box will not detect the USB stick if it is off when the USB stick is inserted.



2. Copy the file ***simpad-upgrade-5.0.5.20932.vs2*** to the root of a USB memory stick. NOTE: Make sure no other files/software is on that USB stick at all before you download the SimPad software to it

3. Install the USB memory stick in the Link Box. The Link Box will automatically start updating and blinking with the green Power LED until updating is finished. This update takes about 10 minutes.

4. Wait until the LEDs on the Link Box are steady green.

The USB stick can be used to update several Link Boxes without reloading the upgrade file.

Check software versions at your convenience

Software version of SimPad and Link Box can be checked in “System Settings - About SimPad” (or “About Link Box”)

