

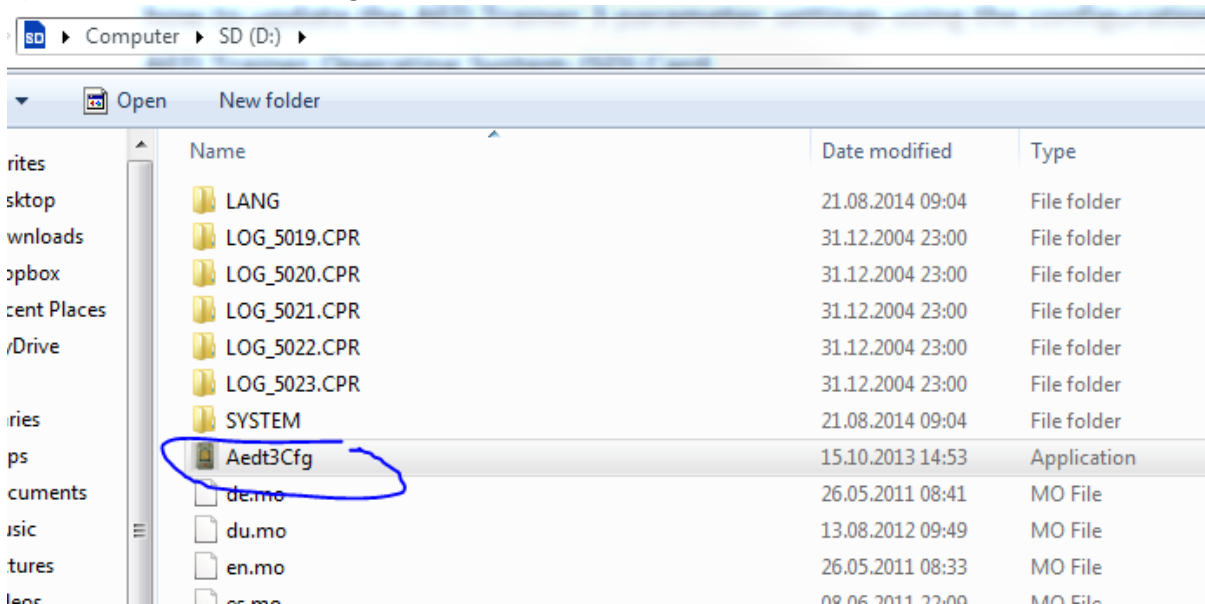
How to change the parameters of the AED Trainer 3 configuration software

(If you want to upgrade the software on the AED Trainer 3 to the latest version, please see separate how to document)

The steps below provide supplementary guidance to the AED Trainer 3 Direction for Use on how to update the AED Trainer 3 parameter settings using the configuration software from the AED Trainer Operating System (SD) Card.

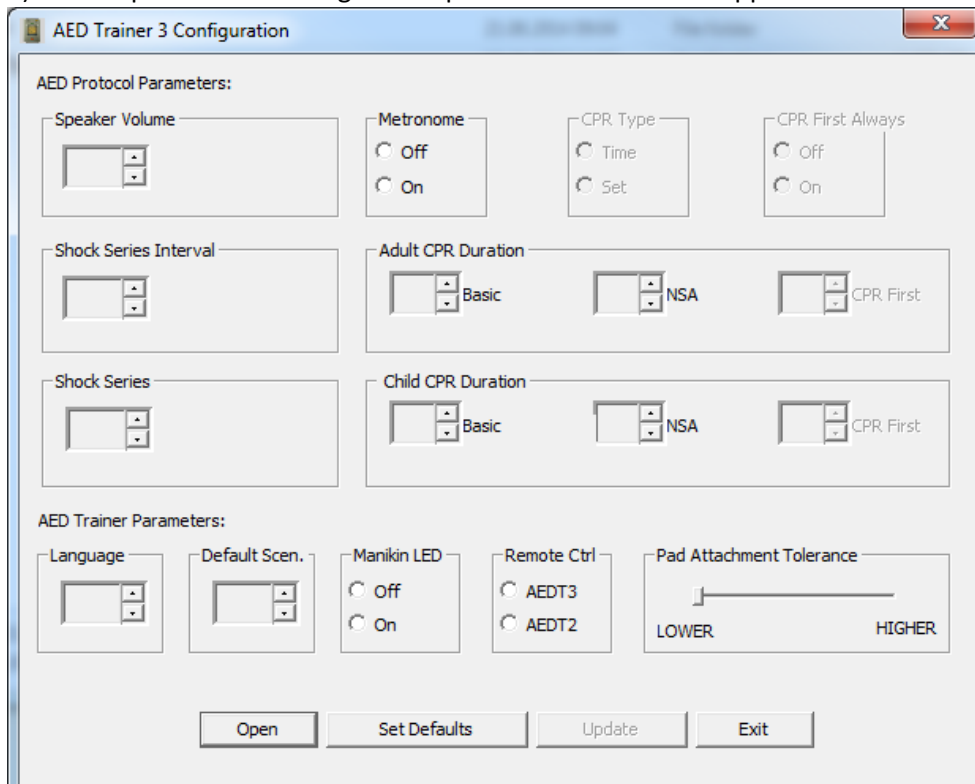
1) Insert the Operating System card into the Card Slot of your Computer or if no slot is available , install the card into a standard card reader and connect it to your computer

2) Double click onto Aedt3Cfg.exe file:



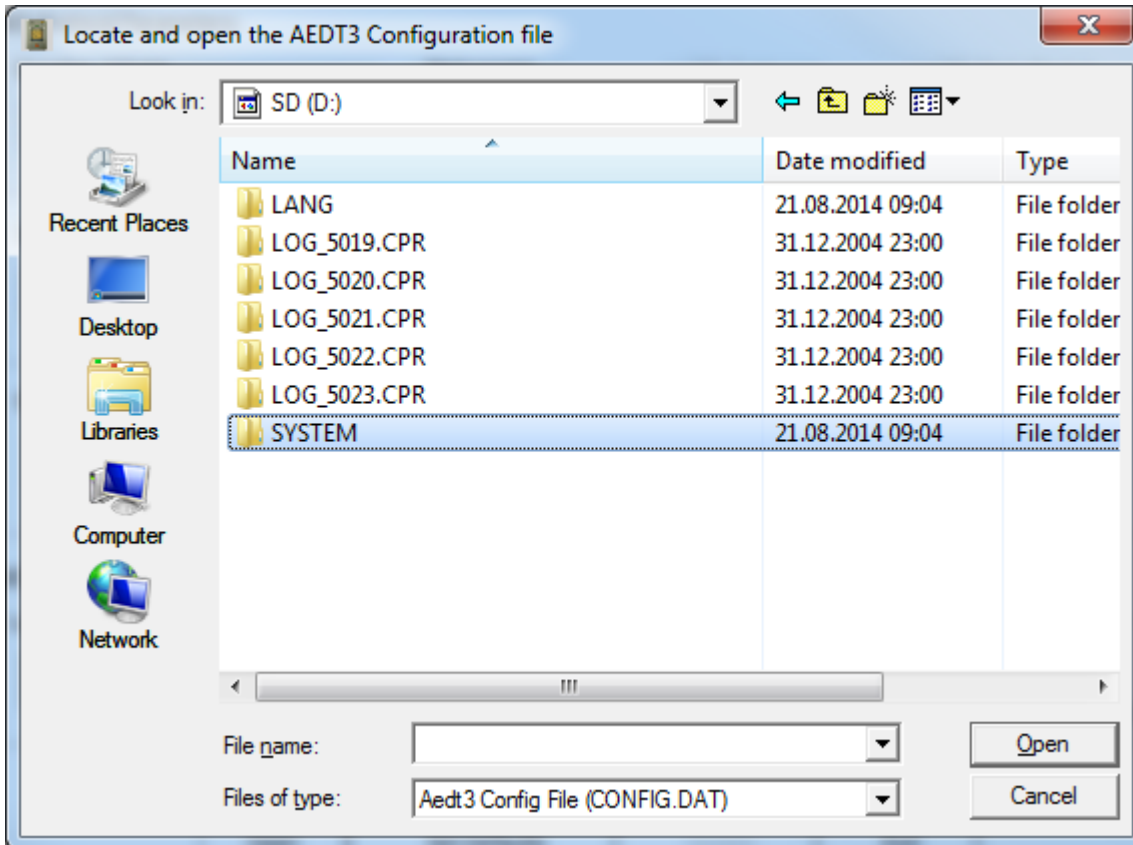
3) Select language.

4) Click “Open” on the configuration parameter screen that appears shown:

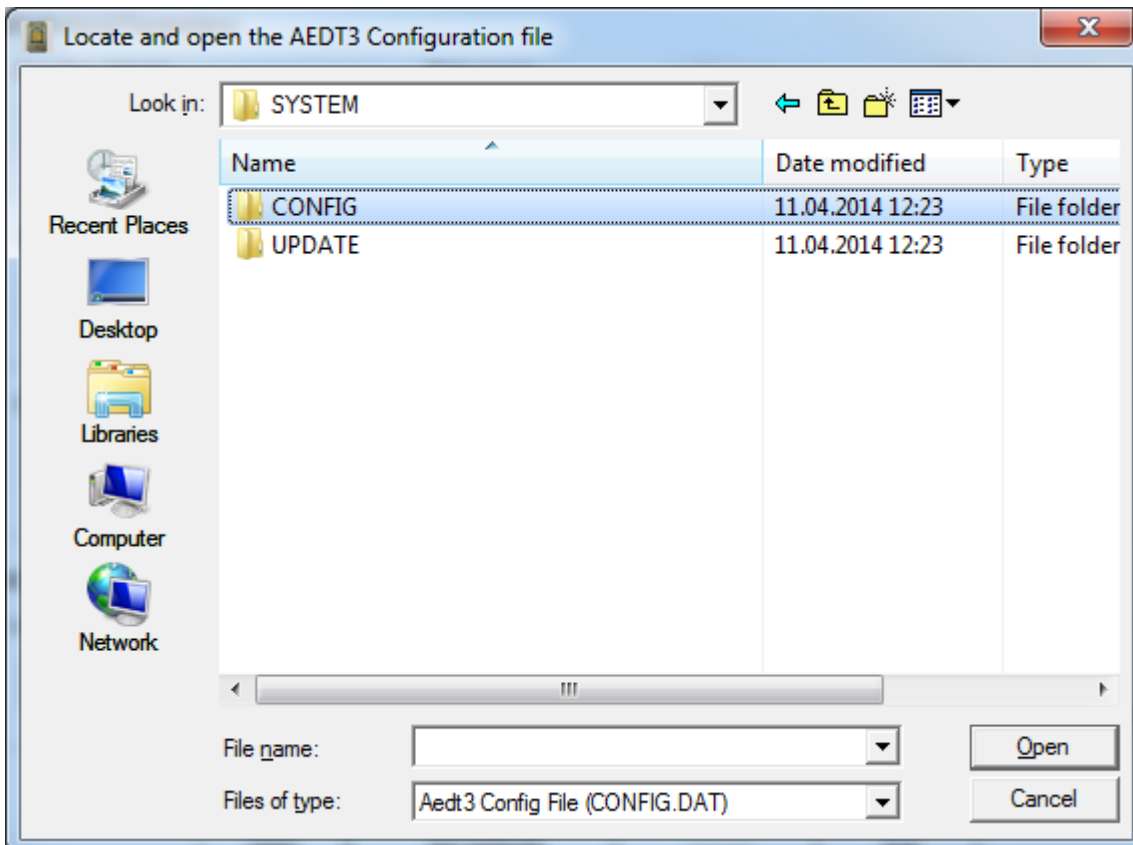


5) Open the Configuration file CONFIG.DAT from the SD Card itself, which is located under files SYSTEM\CONFIG (step a,b,c)

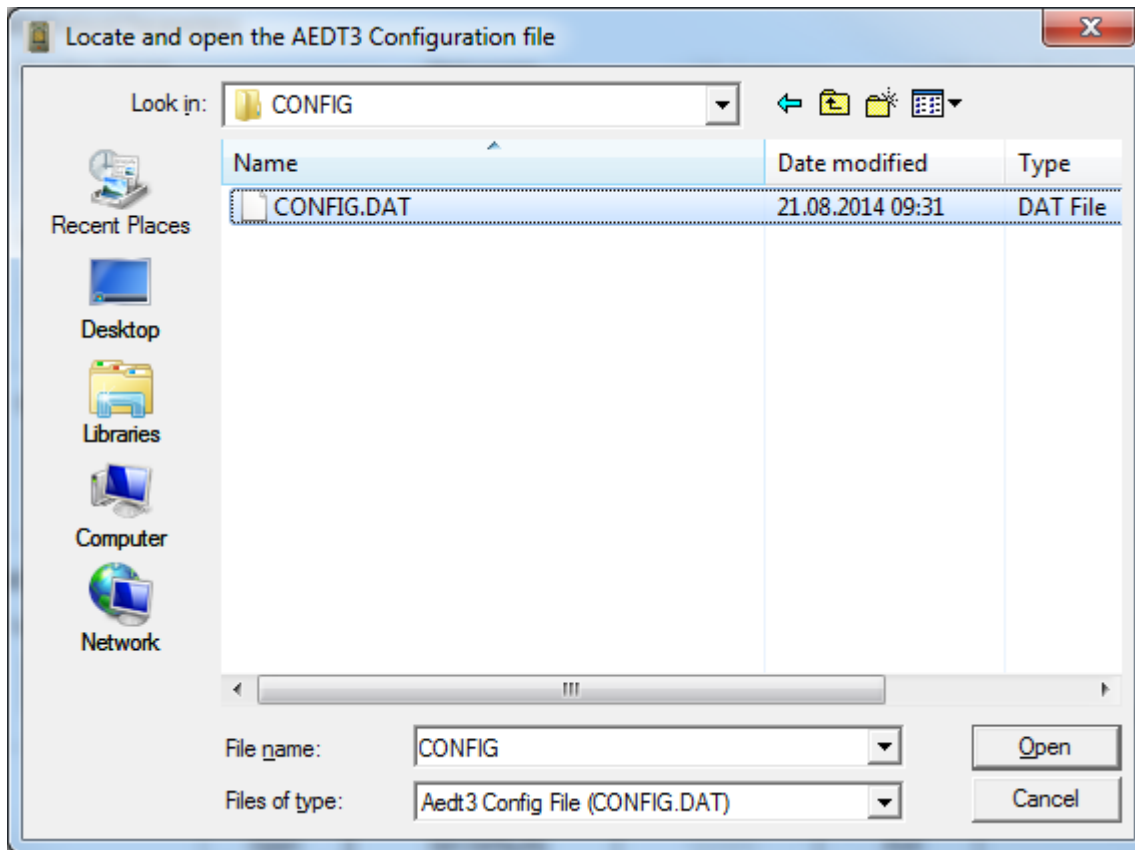
a:



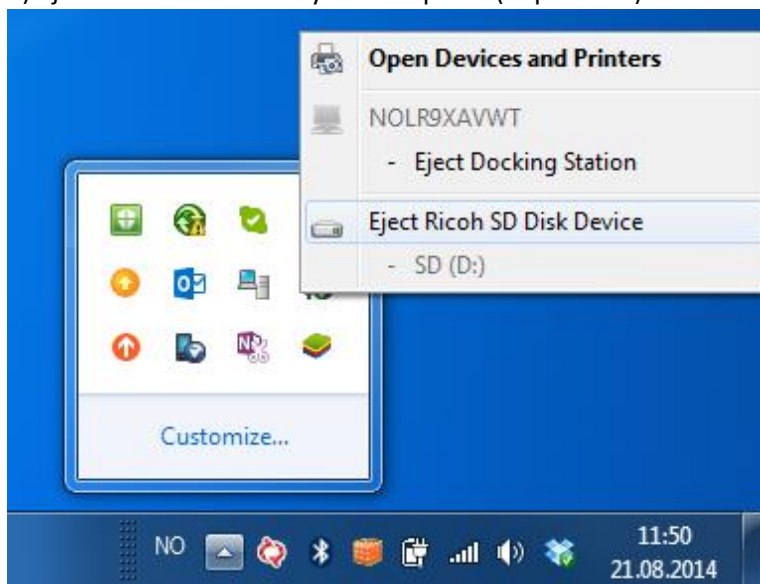
b:



C:



- 6) Adjust the parameter setting as desired.
- 7) After making all the desired changes press "Update"
- 8) Click "Exit" to close the configuration program.
- 9) Eject the SD card from your computer (important!):



- 10) Remove the Operating System Card from the computer or card reader and replace it in the AEDTrainer 3